



Marsing wins battle of boards, game

Homedale High School senior Cory Uria, right, is outnumbered on the glass as Marsing seniors Aaron Salvas, center, and Shea McClellin flock to a rebound during Thursday's non-conference game in Homedale. Photo by Gregg Garrett

McClellin's late surge sends Marsing to win

A familiar formula got Marsing High School a rare boys basketball victory over Homedale on Thursday night.

With the Trojans floundering with foul trouble, Huskies senior wing Shea McClellin assumed control of the game to carry Marsing to a 57-52 non-conference victory on the road.

"I don't think it's necessarily Shea taking over," first-year Marsing coach Jake Walgamott said. "I think it's the team coming around to each other.

"I did say, 'Put it inside to Shea and make (the Trojans) decide what they are going to have to do — guard him or let somebody else score.'"

Whatever the Trojans' decision, Marsing had the answer.

McClellin was perfect on six shots in the fourth quarter, scoring 14 of his game-high 24 points in the final eight minutes.

The Huskies outscored Homedale 22-6 in the fourth quarter.

"A lot of these kids have never been asked to be the guy at the end of the game when it's on the line,

'This is what I was looking for: This game as a measuring stick of how good we're really going to be.'



— Jake Walgamott
Marsing boys basketball coach

and (the Huskies) definitely showed they had that guy," Homedale coach Kenny Thomas said.

Marsing capped a 2-0 season-opening week, while Homedale lost the first of three games played in three consecutive days and ended the first week at 0-3.

Homedale lost 37-20 to Parma on Friday night and then dropped a 77-55 non-conference decision to New Plymouth on Saturday.

McClellin scored 27 points and grabbed 21 rebounds on Nov. 28 as the Huskies opened the year with a 58-28 blowout of Payette.

But Walgamott, who like Thomas is in his first year at the helm, said he looked to the

Homedale game as the barometer for the Huskies.

"This is what I was looking for: This game as a measuring stick of how good we're really going to be," Walgamott said.

Scary good, if McClellin keeps up his antics and the defense continues to play like it did Thursday.

Marsing committed only one foul in the third — by Aaron Salvas with 11 seconds left. Meanwhile, Homedale lost its steam because of several fouls in the third period.

"It kind of forced the tempo of the game to slow down a little bit on our defensive side of the ball," Thomas said.

— JPB

Huskies girls survive rivalry

The girls basketball teams from Marsing and Homedale high schools entered Friday's non-conference showdown heading in the same direction.

Downhill, rapidly.

But, despite a tightly officiated game, the two teams gave fans a show with the Huskies grabbing a ledge and holding on for a 49-42 victory on their home court.

Homedale ended the week on a four-game losing streak, while the victory snapped a three-game skid for Marsing.

"I believe the officials changed things all game long," Marsing coach Don Heller said. "You have to be able as a player and a coach to adjust as the game goes. I felt we did a pretty good job."

The officials called 31 infractions in the first 16 minutes, including 19 on the Trojans. The teams combined to attempt 42 free throws in the first half.

Homedale (1-7 at week's end) converted nine of 12 free throws in the second quarter to narrow a 24-9 deficit triggered by Marsing's 20 unanswered points.

The Trojans (1-7 at week's end) continued to slide in the midst of



Sign of the times

Marsing junior post CC Zanardi, center, mixes it up with Homedale's Whitney Tackett, left, and Jordan Warwick during Friday's rough-and-tumble non-conference game on the Huskies' floor.

a four-game losing streak.

The Huskies (2-3) shook off a horrific 70-29 shellacking against visiting Nyssa, Ore., on Thursday

as Wittney Beckstead poured in 21 points and Sam Wilson added 13.

"I was proud of the girls for coming back the next night and playing with some heart," Heller said. "To me that means a lot, and they really do want to have a good season.

"We could have easily packed it in and said 'season over' after losing three in a row and losing by 41 the night before."

Trojans endure tough week

Homedale coach Mike Greeley continues to discover the capabilities of his squad, even during a rough stretch on the schedule.

The Trojans were winless in four games last week, including a 48-35 non-conference loss to New Plymouth on Saturday.

Homedale started last week with back-to-back losses to Nampa Christian (62-31 in Nampa on Nov. 27) and Melba (38-31 at home on Nov. 28), but the second-year coach knows the team is just a couple of key plays away from a breakthrough.

— to page 2B



Huskies' JV teams sweep Trojans

Marsing High School junior varsity A basketball player Kaitie Kent lines up a shot against the defense of Homedale's Kelsey Martinat on Friday. The host Huskies beat the Trojans 47-42 behind Kent's 12 points. Homedale sophomore Rachelle Christoffersen led all scorers with 13 points. In the junior varsity B game, freshman Jessica Freeman scored seven in Marsing's narrow 31-30 victory. Jessica Eubanks led the Trojans with 14 points.

Sports

Deep, veteran Adrian girls tackle new league

The Adrian High School girls basketball team's quick start to the 2006-07 season belied the Antelopes' up-and-down beginning in the preseason.

Adrian won its first two games last week before dropping the championship game of its Tip-Off Tournament on Saturday to Malheur County rival Jordan Valley, 44-35.

"The girls were at State volleyball and then we had three days off for Thanksgiving, so we only have had six practices," coach Gene Mills said.

Despite only a handful of workouts, the Antelopes crushed the competition in their first two games last week, beating Notus 42-20 on Nov. 28 before blasting Huntington 56-17 in the opening round of the Adrian tournament Friday. The Antelopes lost to Jordan Valley in Saturday's tournament championship game.

"The girls played pretty good defense and fouled way too much, but that's because we weren't in shape," Mills said of the Notus

victory.

Mills said that the team pulled through those early games because of the many athletes on the floor who have experience in the system. The veteran coach is focused on the girls squad this season after handing the reins of the boys basketball team to Brent Ishida and stepping down as football coach to concentrate on Adrian's recent successful school bond election. Mills also is principal at the high school and district superintendent.

"Mostly it was a time issue," he said. "I couldn't see how I could do it all."

The Antelopes have several seniors returning from last year's team that went 9-13 during the final year of competition in the Old Oregon League. Now, Adrian, Jordan Valley and Crane have jumped to the High Desert League.

"I see us challenging Jordan for the championship," Mills said. "I don't know if we've come far enough because (the Mus-

tangs) are so deep and so talented, but we played them twice in June and won those two games.

"I don't know if they're better, but they lost (Cassia) Trautman and (Lauren) Cuvelier from last year's team. Even though they dominated us last year in league games, I think it will be closer."

The Antelopes have a half-dozen players — including five seniors — who made up the nucleus of last year's team. But it's a returning junior — 5-foot-11 post Paige Branstiter — who may hold the key to success for Adrian.

"Paige is probably the best post, 1A, in the state," Mills said. "If someone has a better one, they'll have to prove it to me."

"She's intense and has a physical body, and that allows her to



Gene Mills

do things that other kids that are 5-11 can't do."

Senior Sarah McPeak, a 5-8 wing, will be one of Branstiter's key teammates in the frontcourt.

"Sarah is overall a really good ballplayer and a great kid to work with," Mills said. "She's a solid defender and shooter."

Two 5-6 seniors, Amanda Simpson and Stephenie Hutchings, also will see time at wing.

Mills expects Simpson to bring versatility to the position, creating scoring opportunities for herself as well as her teammates. The coach is impressed with the hustle and hard work Hutchings puts into her game.

Senior Kat Sillonis, a 5-4 point guard, returns for her second season of coordinating a fast-paced offense.

The off-guard will be 5-2 senior Ryann Bowns, who scored nine points and hit her team's only 3-point goal in the early-week victory over Notus.

She returned with a team-high 12 points in Friday's 56-17 win

over Huntington in the opening round of the Antelopes' tourney.

"Ryann has really developed into a tough player," Mills said. "She's a good, fundamentally sound basketball player."

"I think her toughness is much improved, and I look for her to have a really good year."

Two other players who will be elements of the team early include 5-6 sophomore guard Tera Rust and 5-8 junior post Jayna Witty, who Mills said will be a backup to Branstiter. Rust came off the bench to score a team-high 10 points in a balanced attack against Notus. The Antelopes owned a 25-9 halftime lead after holding the Pirates to a single free throw in the first eight minutes.

Depth will be crucial for the Antelopes, who more times than not will try to run their opponent out of the gymnasium.

"We play a lot of kids," Mills said. "We play hard. We're going to push the ball on offense and play hard on defense."

— JPB

Trojan Sports

GIRLS BASKETBALL

Friday, Dec. 8 at Cole Valley Christian, three games beginning at 4:45 p.m.

Monday, Dec. 11 at Parma, three games beginning at 4:45 p.m.

BOYS BASKETBALL

Thursday, Dec. 7 at Nampa Christian, three games beginning at 4:45 p.m.

Saturday, Dec. 9 at Melba, three games beginning at 4:45 p.m.

Tuesday, Dec. 12, home vs. Nampa Christian, three games beginning at 4:45 p.m.

WRESTLING

Thursday, Dec. 7, home vs. Bishop Kelly

Friday and Saturday, Dec. 8-9 at Boise Valley Duals

Tuesday, Dec. 12 at Nyssa, Ore., tri-meet vs. Nyssa and Parma



Rivalry

"The bodies were the same, but the processing and the attitude totally changed, so that was good to see," Greeley said of his team's performance against Melba.

The Mustangs took control with a 14-5 run through the third quarter, but Homedale still had a shot at a win late in the game.

"We just had a couple mistakes, and at that level of basketball, one or two mistakes can put you at a deficit, and that's exactly what happened," he said.

Homedale missed a 3-point shot with 38 seconds left that would have cut the Melba lead to 37-34.

"We were in the ballgame the whole ballgame, and that was really good for us," the coach said.

Junior Corey Hall was a big reason the Trojans surged ahead lead in the second quarter for a 13-10 lead at the break. Her quick hands on defense forced turnovers and attributed to a long scoring drought for Melba. She scored a team-high nine points.

"The old Corey finally came back," Greeley said. "Also, she's just getting back into her own groove because she knew she was capable of it, I knew she was capable of it."

"It was like a phantom she couldn't get a hold of."

The Trojans scored what few points were to be had in the latter stages of the first half. Melba went nearly six minutes without a point until Reynolds Creek product Emily Romero hit a free throw for a 10-9 lead with 1 minute, 37 seconds left.

Homedale took the halftime lead behind jump shots from Mikal Mackenzie and Kendall Rupp in the final 70 seconds.

"I've got 12 girls and 35 different combinations I can look at," Greeley said. "I'm looking for the right one that plays well together, and I think we finally found it (against Melba)."

Jordan Warwick scored 12 points to lead Homedale against Nampa Christian.

— JPB

 AUTO PARTS OWYHEE AUTO SUPPLY 337-4668	HOMEDALE CHIROPRACTIC CENTER J. Edward Perkins, Jr. D.C. 337-4900	 Farm Bureau Insurance Company 337-4041
 Matteson's 337-4664	 Owyhee Family Dental Center a family oriented practice New Patients Always Welcome 337-4383	 SPECIALTY INC. WOOD PRODUCTS 573-2133
 BOWEN & PARKER 337-3271	The Owyhee Avalanche 337-4681	 Tires LES SCHWAB 337-3474
 PAUL'S	 CAMPBELL TRACTOR CO 337-3142	 Auto Body By Alan 337-4837
 Snake River Co. LLC 337-3115	Owyhee Publishing 337-4866	 PICK UP THE PACE 30 Minute Workout for Women 337-4040

Plan your Holiday Party with Owyhee Lanes & Restaurant!

Our banquet room is available for your:

- Company Holiday Party
- Birthday Party • Family Gathering

ORDER HOMEMADE PIES FOR CHRISTMAS NOW!

- Seating capacity up to 70
- Prime Rib Dinner to Burgers • Beer & Wine
- Bowling Packages available too!

BREAKFAST BUFFET!

Saturdays and Sundays 7 am- 11 am
\$5.99 Adults, \$3.99 kids 11 and under

Owyhee Lanes and Restaurant
Call & make your reservation today! 337-3757

Sports

HMS girls wind down season

The girls basketball teams from Homedale Middle School wrap up the regular season against Weiser on Thursday.

The seventh-graders, coached by Luci Asumendi-Mereness and Stuart Emry take on the Wolverines at 4:15 p.m. inside the HMS gymnasium.

The eighth-grade Trojans, coached by Kevin Cornwall and Shari Kirk, visit Weiser for a 4:15 p.m. contest.

The District III seventh-grade tournament runs Monday and Wednesday in Fruitland. The eighth-grade championship tourney takes place Monday, Wednesday and Thursday, Dec. 14 in Payette. The seventh-grade tournament finals will be played Thursday, Dec. 14 at McCain Middle School in Payette.

Homedale's seventh-graders have an A team and a B team.

The A team is led by point guards Justine Calzacorta and Kylie Farwell. Both have distributed the ball to teammates often, and run the offense well. The team won three of its first four games this season.

Kylie Kushlan and Bryce Osborn anchor the low post area, and the coaches say their shot selection and rebounding from there has been helpful. Ashley Leslie and Raven Kelly play wing on offense and defense, and they have created turnovers and scoring opportunities for themselves and their teammates.

Asumendi-Mereness and Emry said Laurien Mavey and Aubrey Nash have wreaked havoc on opposing teams with their quickness in the half-court trap. They are consistently around the ball, causing turnovers or steals that give us opportunities on offense.

"This is a good group of girls. They work hard, and they play at a level they haven't played at before. They utilize their quickness well throughout the game," Asumendi-Mereness said. "They are a fun group of girls to coach. Coach Emry and I are enjoying working with them, demanding a lot from them, and watching them improve week to week."

After losing its first two games to Payette Lakes in McCall and Fruitland at home, the Homedale



Looking for elbow room

Homedale Middle School girls basketball player Laurien Mavey looks for a shot amid a mass for Ontario defenders last week in the Trojans' seventh-grade game at home.

B team bounced back with wins over host Ontario in overtime and McCain inside the HMS gym.

Veronica D'Alessio and Lyndee Coombs have created more scoring opportunities for the team with their consistent rebounding.

Katie Price and Kaitlyn Garcia have split their time between wing and point guard and the coaches said they improve with each game.

Jessica Broadbent scored in three of the team's first four games, while Rosie King and Rachael Brasher contributed with steals. The coaches say wing Jackie Barbosa has been hesitant to shoot, but plays good defense.

Emry and Asumendi-Mereness said Amanda Cook plays wherever she is needed — low post, wing and point — and her knowledge of the plays has helped the team.

The coaches also said Kayla Mello's steady play has been an equalizer on the court. Her calm demeanor has helped steady teammates when they start to get rattled.

"It has been exciting to watch these girls improve with each game. They are becoming more confident," Asumendi-Mereness said. "The whole group of girls are a pleasure to coach for Coach Emry and I."

Year's first win means third for Adrian boys

Marus Hope canned five 3-point goals on the way to 20 points Saturday as the Adrian High School boys basketball team broke into the win column with a 49-39 victory over Harper in the third-place game of the Antelopes' Tip-Off Tournament.

First-year coach Brent Ishida said Adrian (1-2 at week's end) used a stout defense in the second half to pull away from the Hornets.

"I'm really proud of the boys for their willingness to dig deep when it counts and get the job done," Ishida said.

Kyle Rodgers sparked the defense with quick hands for steals and chipped in nine points. Kade Thomas grabbed 11 rebounds to further subdue Harper.

Huntington, which had edged Adrian 58-57 in the first night of action Friday, won the tournament title by beating Jordan Valley 67-55 in Saturday's second game.

Huntington 58, Adrian 57

The Locomotives nailed a 3-pointer in the final seconds Friday to turn away a fierce Antelopes comeback.

"They were a tough team that

caught us off-guard," Ishida said. "We battled hard all the way to stay in the game."

Behind Hope's 3-pointers and solid defense, Adrian rallied from a six-point deficit in the game's final three minutes to take a 57-55 lead before the clutch 3-pointer.

Greenleaf 73, Adrian 27

Adrian opened a new season Nov. 28 with a lopsided loss to Greenleaf Friends Academy in Idaho.

Thomas scored 11 points, but the Antelopes couldn't withstand Greenleaf's long-range attack.

The Grizzlies fired in eight 3-pointers and was led by Matthew Choate's 13 points.

Homedale resident Brandt Graber hit a 3-pointer on the way to eight points for Greenleaf.

Jordan Valley splits its games in Adrian tourney

The Jordan Valley boys basketball team lost 67-55 to Huntington in Saturday's championship game of the Adrian Tip-Off Tournament.

The Mustangs started the season Friday by blowing out Harper 55-26.

Balanced scoring carries Rimrock

Three players scored in double figures Thursday night as the Rimrock High School girls basketball team opened the 1A Western Idaho Conference season with a victory.

Freshman Jackie Thurman poured in a team-high 14 points as the Raiders out-ran visiting Wilder 58-46.

The visiting Wildcats (x-x overall, 0-1 1A WIC at week's end) owned a 15-12 lead after the

first eight minutes.

But first-year coach Mike Chandler's Raiders (6-0, 1-0) began to pull away in the second quarter and led 27-25 at the break.

Thurman also continued to dominate opposing post players, snagging 17 rebounds against Wilder (2-4, 1-1).

Kailie Murray scored 14 points, and Shelby Chandler added 11 to round out the Raiders' top scorers.

Rimrock 47, Castleford 17

The Raiders began the week at home Nov. 28 with a lopsided non-conference victory over Castleford.

Ellie Cantrell and Chandler scored 18 points apiece to lead the way. Cantrell drained three 3-point goals and grabbed nine rebounds. Murray and Laura Zaragoza collected eight rebounds each, while Thurman had seven of her nine boards on Castleford's glass.

Marsing Huskies

GIRLS BASKETBALL

Thursday, Dec. 7, home vs. Parma, three games beginning at 4:45 p.m.

Saturday, Dec. 9, home vs. Payette, three games beginning at 4:45 p.m.

Tuesday, Dec. 12 at Melba, three games beginning at 4:45 p.m.

BOYS BASKETBALL

Monday, Dec. 11, home vs. Nyssa, Ore., three games beginning at 4:45 p.m.

WRESTLING

Friday and Saturday, Dec. 8-9 at Nyssa Invitational, Nyssa, Ore., 1 p.m.



Sports

PREP GIRLS BASKETBALL STATISTICS

Homedale Trojans							
Scoring	G	2FG	3FG	FTM-FTA	Pct.	Points	PPG
Corta	6	6	0	5-15	.333	17	2.8
Warwick	6	8	9	3-5	.600	46	7.7
Wheeler	6	8	0	6-18	.500	22	3.7
Tackett	6	0	1	2-6	.333	5	0.8
Johnson	6	10	0	9-18	.500	29	4.8
J. Hall	6	0	0	1-2	.500	1	0.2
Marks	6	5	0	2-5	.400	12	2.0
C. Hall	5	2	0	8-16	.500	12	2.4
Mackenzie	6	6	1	1-6	.167	16	2.7
Rupp	6	12	0	3-4	.750	27	4.5
Brown	6	2	0	0-0	.000	4	0.7
Brasher	6	8	0	1-8	.125	17	2.8
Totals	6	67	11	41-103	.398	208	34.7
Other stats	G	OReb.	DReb.	RPG	Steals	Assists	
Corta	6	3	7	1.7	7	4	
Warwick	6	5	13	3.0	2	3	
Wheeler	6	7	12	3.2	4	2	
Tackett	6	1	4	0.8	2	3	
Johnson	6	4	3	1.2	7	10	
J. Hall	6	0	1	0.2	2	0	
Marks	6	1	18	3.2	0	4	
C. Hall	5	4	7	2.2	1	1	
Mackenzie	6	1	7	1.3	1	1	
Rupp	6	6	10	2.7	4	4	
Brown	6	2	6	1.3	0	0	
Brasher	6	4	9	2.2	0	0	
Totals	6	38	97	22.5	30	32	
Note — Doesn't include Dec. 1 vs. Marsing or Dec. 2 vs. New Plymouth							

Marsing Huskies							
Scoring	G	2FG	3FG	FTM-FTA	Pct.	Points	PPG
Wilson	4	9	0	4-9	.444	22	5.5
Roeser	4	4	0	1-6	.167	9	2.3
Beckstead	4	11	0	6-19	.316	28	7.0
Kent	1	0	0	0-0	.000	0	0.0
Moreno	3	8	4	4-6	.667	32	10.7
Zanardi	4	1	0	5-9	.556	7	1.8
Staudenmier	4	1	0	0-0	.000	2	0.5
Chenoweth	4	2	1	0-0	.000	7	1.8
Villa	1	0	0	0-0	.000	0	0.0
Clausen	4	3	0	4-15	.267	10	2.5
Totals	4	39	5	24-64	.375	117	29.3
Other stats	G	OReb.	DReb.	RPG	Assists	Steals	
Wilson	4	3	10	3.3	5	8	
Roeser	4	1	6	1.8	4	6	
Beckstead	4	2	8	2.5	7	2	
Kent	1	0	0	0.0	1	0	
Moreno	3	2	5	2.3	5	8	
Zanardi	4	7	12	4.8	1	9	
Staudenmier	4	1	0	0.3	1	0	
Chenoweth	4	0	5	1.3	8	13	
Villa	1	0	0	0.0	0	1	
Clausen	4	5	7	3.0	2	1	
Totals	4	21	53	18.5	34	48	
Note — Doesn't include Dec. 1 vs. Homedale							

Rimrock Raiders							
Scoring	G	2FG	3FG	FTM-FTA	Pct.	Points	PPG
E. Cantrell	6	12	15	5-7	.714	74	12.3
Chandler	5	20	5	6-10	.600	61	12.2
Merrick	3	2	0	0-0	.000	4	1.3
Murray	6	16	3	4-11	.364	45	7.5
A. Cantrell	5	11	0	2-5	.400	24	4.8
Thurman	6	34	0	15-23	.652	83	13.8
Zaragoza	5	3	0	3-6	.500	9	1.8
Gennette	3	2	0	0-0	.000	4	1.3
Ridley	2	0	0	0-0	.000	0	0.0
Richardson	2	0	0	0-0	.000	0	0.0
Totals	6	100	23	35-62	.565	304	50.7
Other stats	G	OReb.	DReb.	RPG	Assists	Steals	
E. Cantrell	6	16	22	6.3	17	23	
Chandler	5	5	10	3.0	16	15	
Merrick	3	2	6	2.7	8	3	
Murray	6	6	31	6.2	23	13	
A. Cantrell	5	18	15	6.6	5	2	
Thurman	6	30	25	9.2	4	4	
Zaragoza	5	12	13	5.0	5	6	
Gennette	3	7	8	5.0	2	1	
Ridley	2	1	0	0.5	0	1	
Richardson	2	1	2	1.5	0	2	
Totals	6	91	139	38.3	80	70	

PREP STANDINGS
Girls basketball

3A SRV	Conf.		All	
	W	L	W	L
Fruitland	0	0	4	1
Homedale	0	0	1	7
McCall-Donnelly	0	0	0	5
Payette	0	0	1	6
Weiser	0	0	3	3

This week's games	
Thursday	
Weiser at Ontario, Ore.	
Tri-Valley at Payette	
Council at McCall-Donnelly	
Friday	
Homedale at Cole Valley Christian	

Melba at Weiser	
La Grande, Ore., at Fruitland	
Saturday	
Payette at Marsing	
Fruitland at Nampa Christian	
McCall-Donnelly at Orofino	
Monday	
Homedale at Parma	
Tuesday	
Fruitland at Vale, Ore.	

Last week's scores	
Saturday	
New Plymouth 48, Homedale 35	
Horseshoe Bend 39, Payette 30	
Friday	
Marsing 49, Homedale 42	
La Grande, Ore. 32, Fruitland 29	

PREP BOYS BASKETBALL STATISTICS

Homedale Trojans							
Scoring	G	2FG	3FG	FTM-FTA	Pct.	Points	PPG
Emry	1	3	0	1-1	1.000	7	7.0
Holloway	1	1	0	1-1	1.000	3	3.0
Hansen	1	0	0	0-0	.000	0	0.0
Liddell	1	2	0	3-4	.750	7	7.0
Uria	1	1	1	2-3	.667	7	7.0
Ferguson	1	3	0	1-1	1.000	7	7.0
Miyasako	1	1	0	0-0	.000	2	2.0
Krzesnik	1	1	2	1-1	1.000	9	9.0
Tolmie	1	1	0	2-2	1.000	4	4.0
Bingham	1	3	0	0-0	.000	6	6.0
Totals	1	16	3	11-13	.846	52	52.0
Other stats	G	OReb.	DReb.	RPG	Blocks	Steals	
Emry	1	3	3	6.0	0	0	
Holloway	1	3	5	8.0	0	0	
Hansen	1	0	0	0.0	0	0	
Liddell	1	1	1	1.0	0	1	
Uria	1	1	1	1.0	0	1	
Ferguson	1	1	4	5.0	0	1	
Miyasako	1	0	1	1.0	0	2	
Krzesnik	1	1	3	4.0	0	1	
Bingham	1	4	3	7.0	2	0	
Totals	1	14	21	35.0	2	6	
Note — Doesn't include Dec. 1 game vs. Parma or Dec. 2 game vs. New Plymouth							

Marsing Huskies							
Scoring	G	2FG	3FG	FTM-FTA	Pct.	Points	PPG
Paramo	1	0	0	0-0	.000	0	0.0
Quebrado	2	2	0	5-11	.455	9	4.5
Marcial	2	0	0	0-0	.000	0	0.0
Dines	2	1	3	3-8	.375	14	7.0
Neilsen	2	0	0	0-0	.000	0	0.0
Myers	2	2	1	0-1	.000	7	3.5
Salvas	2	5	0	0-3	.000	10	5.0
McClellin	2	16	4	7-20	.350	51	25.5
Marman	2	2	0	4-5	.800	8	4.0
Cossel	2	5	0	6-8	.750	16	8.0
Galligan	2	0	0	0-0	.000	0	0.0
Totals	2	33	8	25-56	.446	115	57.5
Other stats	G	OReb.	DReb.	RPG	Assists	Steals	
Paramo	1	1	1	2.0	0	0	
Quebrado	2	1	2	1.5	11	3	
Marcial	2	0	1	0.5	0	0	
Dines	2	1	5	3.0	6	4	
Neilsen	2	0	1	0.5	1	0	
Myers	2	3	2	2.5	2	2	
Salvas	2	8	9	8.5	4	2	
McClellin	2	14	22	18.0	4	7	
Marman	2	1	7	4.0	2	1	
Cossel	2	3	3	3.0	1	0	
Galligan	2	0	0	0.0	0	0	
Totals	2	32	53	42.5	31	19	

Grangeville 48, McCall-Donnelly 17				Fruitland 47, Melba 43					
Weiser 43, New Plymouth 39				Parma 44, Payette 28					
Thursday				Ontario, Ore., 79, Nampa Christian 44					
Fruitland 47, Melba 43				New Plymouth 39, Vale, Ore., 37					
Parma 44, Payette 28				Wednesday					
Tuesday, Nov. 28				Cascade 63, Cole Valley Christian 33					
Melba 38, Homedale 31				Tuesday, Nov. 28					
New Plymouth 51, Payette 24				Melba 38, Homedale 31					
Vale, Ore., 44, Weiser 36 (OT)				New Plymouth 51, Payette 24					
Fruitland 50, Columbia 31				Parma 41, Nyssa, Ore., 43					
Cascade 58, McCall-Donnelly 17				Monday, Nov. 27					
Monday, Nov. 27				Nampa Christian 62, Homedale 31					
Nampa Christian 62, Homedale 31									
2A WIC				1A WIC					
Conf.		All		Conf.		All			
W	L	W	L	W	L	W	L		
Cole Valley Chr.	0	0	1	6	Greenleaf FA	2	0	3	2
Marsing	0	0	2	3	Idaho City	1	1	3	3
Melba	0	0	3	2	Rimrock	1	0	6	0
Nampa Christian	0	0	2	3	Wilder	1	1	2	4
New Plymouth	0	0	5	2	Gem State Adv.	0	2	1	5
Parma	0	0	5	1	Liberty Charter	1	1	4	2
					Notus	0	1	0	7
This week's games				This week's games					
Thursday				Today					
Parma at Marsing				Liberty Charter at Glenns Ferry					
Melba at Cole Valley Christian				Thursday					
Nampa Christian at New Plymouth				Rimrock at Notus					
Friday				Idaho City at Gem State Adventist					
Homedale at Cole Valley Christian				Wilder at Greenleaf Friends Academy					
Melba at Weiser				Tri-Valley at Payette					
Saturday				Foundations Academy at Liberty Charter					
Payette at Marsing				Friday					
Fruitland at Nampa Christian				Greenleaf Friends Academy at Jordan Valley, Ore.					
Monday				Monday					
Homedale at Parma				Greenleaf Friends Academy at Rimrock					
Tuesday				Notus at Gem State Adventist					
Marsing at Melba				Liberty Charter at Wilder					
Cole Valley Christian at Nampa Christian				Tuesday					
New Plymouth at Parma				Gem State at Jordan Valley, Ore.					
				Notus at Adrian, Ore.					
				Idaho City at St. Ambrose					
Last week's scores				Last week's scores					
Saturday				Friday					
New Plymouth 48, Homedale 35				Council 51, Wilder 33					
Friday				Thursday					
Marsing 49, Homedale 42				Rimrock 58, Wilder 46					
Weiser 43, New Plymouth 39									
Thursday									
Nyssa, Ore., 70, Marsing 29									

Sports

Adrian volleyball player reflects on special season

This first-person account of the Adrian High School volleyball team's recent third-place finish at the 1A Oregon state tournament was submitted by Antelopes senior Kat Sillonis.

— Ed.

by Kat Sillonis, AHS Journalism

It was a long road for Adrian to get to the 1A Oregon State Volleyball Tournament. Our trek started in August, with a goal to make it to State and go as far as we could. We dominated the regular season, losing only one match at a tournament in Cove. At District in John Day, we were rewarded for our hard work by placing second, and we were off to the state playoffs.

In order to get to Forest Grove, we had to play two playoff

matches. The first one was against Damascus Christian, the No. 3 seed from the Valley 10. We beat them in front of our home crowd in three games. The next game was against our former Old Oregon League rival Cove, who was a No. 1 seed. We defeated them in four games to make it into the Elite Eight.

Next we traveled across Oregon for our first match in the Forest Grove on Nov. 10. Our game was at 8 a.m., so we had prepared all week by practicing at 6 a.m. Our opponent was Days Creek, the No. 1 seed from the Skyline.

“I was really excited going into the tournament, and I felt that we would do well,” said Stephenie Hutchings, a senior outside hitter. “I felt confident.”

Very few balls hit the ground

on the Antelopes’ side. We won in three straight games, 25-11, 25-14, 25-19, sending Days Creek to the consolation bracket.

At 6 p.m. we traveled back to Pacific University to play our semifinal match against Griswold, the No. 1 seed from the Big Sky. All we knew about the opposing team was that they came from a tough league and had beaten the two-time defending state champion (Durfur) at their district tournament.

“I felt really confident coming into the game against Griswold. I knew it would be tough from what I saw of their game against Prairie City, but I knew we would play a good game,” senior defensive specialist Amanda Simpson said.

In the first game, we dominated Griswold 25-10, but we fell into a

slump in the second game, losing 25-18. The Antelopes regrouped and defeated the Grizzlies 25-20. In the fourth game, we fell short, losing to the Grizzlies 25-23.

It all came down to the deciding fifth game, which was shortened to 15 points. We all wanted to move on, but it was not meant to be. We lost to Griswold 15-7; however, we moved on to the third-place match.

“I was really upset after we lost, but I had to keep my head up because we still had the third-place game to play the next day,” senior setter Ryann Bowns said.

At noon on Saturday, Nov. 11, we played for third place. Our rivals for the game were Mohawk, the No. 1 seed from the Mountain West. We knew that this team was going to be hard to beat, as their

last two matches had gone to five games.

“I was really upset when we lost (to Griswold), but I still wanted third place just as bad as I wanted first,” junior defensive specialist Kirsten Phillips said. The rest of the team felt the same way, as we defeated Mohawk in three games, 25-17, 25-19, 25-21, to capture third place.

“I was really excited that we got third place. It was a great reward for all of our hard work throughout the season,” junior middle blocker Jayna Witty said.

The biggest surprise came after the championship match, when the Adrian volleyball team and their great fans were awarded the tournament’s sportsmanship

— to page 6B

✓ Scoreboard

Nampa Christian	0	0	0	2
New Plymouth	0	0	1	0
Parma	0	0	2	0

This week's games				
Thursday				
Homedale at Nampa Christian				
Friday				
Fruitland at Melba				
Payette at New Plymouth				
Saturday				
Homedale at Melba				
Parma at Weiser				
Gem State Adventist at Cole Valley Christian				
Monday				
Nyssa, Ore., at Marsing				
Tuesday				
Nampa Christian at Homedale				
Melba at Payette				

Last week's scores				
Saturday				
New Plymouth 77, Homedale 55				
Payette 58, Nampa Christian 44				
Cole Valley Christian 52, Liberty Charter 51				
Friday				
Parma 37, Homedale 20				
Cascade 64, Cole Valley Christian 44				
Weiser at Melba				
Liberty Charter at Council				
Thursday				
Marsing 57, Homedale 52				
Parma 51, Payette 41				
Notus 53, Cole Valley 50				
Tuesday, Nov. 28				
Marsing 58, Payette 38				
Cole Valley Chr. 74, Gem State 30				

1A WIC				
		Conf.		All
	W	L	W	L
Gem State Adv.	0	0	0	2
Greenleaf FA	0	0	1	0
Idaho City	0	0	2	0
Liberty Charter	0	0	0	3
Notus	0	0	2	0
Rimrock	0	0	1	0
Wilder	0	0	1	0

This week's games				
Thursday				
Gem State at Horseshoe Bend				
Friday				
Rimrock at Camas County				
Greenleaf Friends Academy at Jordan Valley, Ore.				
Horseshoe Bend at Idaho City				
Wilder at Meadows Tournament				
Saturday				
Gem State Adventist at Cole Valley Christian				
Tri-Valley at Idaho City				
Wilder at Meadows Tournament				
Last week's scores				
Saturday				
Cole Valley Chr. 52, Liberty Charter 51				
Saturday				
Bliss Tournament				
Rimrock 48, Rockland 41				

Thursday				
Cascade 64, Gem State Adventist 23				
Idaho City 62, Garden Valley 49				
Council 53, Liberty Charter 41				
Notus 53, Cole Valley 50				
Wednesday				
Glenns Ferry 76, Liberty Charter 28				
Tuesday, Nov. 28				
Rimrock at Owyhee, Nev., ppd. snow.				
Rescheduled for Dec. 13				
Greenleaf Friends Academy 73, Adrian 27				
Cole Valley Christian 74, Gem State Adventist 30				
Notus 54, Garden Valley 46				
Idaho City 55, Horseshoe Bend 43				
Monday, Nov. 27				
Wilder 52, Council 49 (OT)				

High Desert		Conf.		All	
East	W	L	W	L	
Adrian	0	0	1	2	
Burnt River	0	0	0	0	
Crane	0	0	0	0	
Harper	0	0	0	2	
Huntington	0	0	1	1	
Jordan Valley	0	0	1	0	
West	W	L	W	L	
Dayville-Mon.	0	0	0	0	
Mitchell	0	0	0	0	
Prairie City	0	0	0	0	
Spray	0	0	0	0	
Ukiah	0	0	0	0	

This week's games				
Friday				
Greenleaf Friends Academy at Jordan Valley				
Adrian at Cove Tournament				
Harper, Ukiah, Prairie City at Prairie City Tournament				
Mitchell at North Lake Tournament				
Crane Monument-Dayville at Monument-Dayville Tournament				
Saturday				
Adrian at Cove Tournament				
Harper, Ukiah, Prairie City at Prairie City Tournament				
Mitchell at North Lake Tournament				
Crane Monument-Dayville at Monument-Dayville Tournament				
Tuesday				
Dayville-Monument at Prairie City				
Spray at Mitchell				
Crane at Harper				
Huntington at Burnt River				

Last week's scores				
Saturday				
Adrian Tip-Off Tournament				
Third place — Adrian 49, Harper 39				
Championship — Jordan Valley vs. Huntington				
Dayville-Monument, Mitchell at Condon-Wheeler Tournament				
Ukiah, Prairie City at Echo Tournament				
Friday				
Adrian Tip-Off Tournament				
Huntington 58, Adrian 57				

Jordan Valley 55, Harper 46				
Dayville-Monument, Mitchell at Condon-Wheeler Tournament				
Ukiah, Prairie City at Echo Tournament				
Spray at Colton Tournament				
Thursday				
Mt. Bachelor at Dayville-Monument				
Wednesday				
South Wasco County at Spray				
Tuesday, Nov. 28				
Greenleaf Friends 73, Adrian 27				

PREP RESULTS

Girls basketball

Thursday's games

Nyssa, Ore., 70, Marsing 29

NYSSA, ORE. (70)				
Contreras 2-6 0-2 6, C. Ramos 4-7 0-0 9, Reece 4-6 2-4 10, Froeveri 0-1 2-2 2, Anderson 3-4 1-2 7, Jasper 3-6 1-4 7, Wagstaf 4-5 0-1 8, Chavez 2 0-2 4, J. Ramos 0-0 0-0 0, Musgrave 1-3 0-2 2, Kurtz 3-6 1-1 7, Escobedo 1-2 0-0 2, Zittercob 3-3 2-2 8. Totals 30-51 9-21 70				
MARSING (29)				
Wilson 1-3 4-5 6, Roeser 0-4 0-2 0, Beckstead 2-5 0-8 4, Moreno 4-8 0-0 10, Zanardi 0-5 3-4 3, Staudenmier 0-2 0-0 0, Chenoweth 1-8 0-0 2, Clausen 1-5 2-9 4. Totals 9-40 9-28 29				
Nyssa, Ore. 18 17 20 15 — 70				
Marsing 6 7 2 14 — 29				
3-point shooting — Nyssa 1-2 (C. Ramos 1-1, Contreras 0-1), Mar 2-7 (Moreno 2-3, Reoser 0-2, Chenoweth 0-2). Total fouls — Nyssa 21, Mar 18. Fouled out — Musgrave, Beckstead. Technical fouls — None				

Rimrock 58, Wilder 46				
WILDER (46)				
Godina 4 1-2 9, Savage 1 2-4 4, Castellanos 5 0-0 14, Dang 0 0-0 0, Cardenas 0 0-0 0, Elizondo 0 0-0 0, Betancourt 8 3-7 19. Totals 18 6-13 46				
RIMROCK (58)				
E. Cantrell 2 2-2 8, Chandler 3 5-6 11, Murray 6 1-4 14, A. Cantrell 1 0-0 2, Thurman 6 4-8 16, Zaragoza 2 3-6 7, Gennette 0 0-0 0. Totals 20 15-26 58				
Wilder 15 10 10 11 — 46				
Rimrock 12 15 14 17 — 58				
3-pointers — Wil 4 (Castellanos 4), Rim 3 (E. Cantrell 2, Murray). Total fouls — Wil 20, Rim 13. Fouled out — Betancourt, E. Cantrell. Technical fouls — None				

Nov. 28 games				
Melba 38, Homedale 31				
MELBA (38)				
W. Johnson 2 1-2 6, K. Leavitt 2 0-1 4, Romero 1 2-4 4, Tiegs 2 2-7 7, Heiner 3 0-1 6, Duckworth 0 0-0 0, N. Leavitt 3 3-7 9, Harris 1 0-0 2, Stirn 0 0-0 0. Totals 14 8-22 38				
HOMEDALE (31)				
Corta 0-3 0, Warwick 2 1-2 6, Wheeler 1 1-2 3, Tackett 0 0-0 0, H. Johnson 1 5-6 7, J. Hall 0 0-0 0, Marks 0 0-0 0, C. Hall				

2 5-8 9, Mackenzie 1 0-1 2, Rupp 2 0-0 4, Browns 0 0-0 0, Brasher 0 0-0 0. Totals 9 12-22 31				
Melba 3 7 14 14 — 38				
Homedale 5 8 5 13 — 31				
3-pointers — Melba 2 (W. Johnson, Tiegs), Hom 1 (Warwick). Total fouls — Melba 17, Hom 20. Fouled out — None. Technical fouls — None				

Rimrock 47, Castleford 17				
CASTLEFORD (17)				
Medina 2 0-0 5, R. Wiggins 0 4-4 4, L. Wiggins 0 0-0 0, Machado 0 0-0 0, Rodriguez 0 2-2 0, Durham 0 0-0 0, Kimmel 1 0-0 2, M. Elsner 0 0-0 0, J. Elsner 1 1-2 4, Rodgers 0 0-0 0. Totals 4 7-8 17				
RIMROCK (47)				
E. Cantrell 7 1-2 18, Chandler 8 1-2 18, Murray 2 0-0 5, A. Cantrell 1 0-0 2, Thurman 1 2-3 4, Zaragoza 0 0-0 0, Gennette 0 0-0 0, Ridley 0 0-0 0. Totals 19 4-7 47				
Castleford 0 5 2 10 — 17				
Rimrock 13 12 20 2 — 47				
3-pointers — Cas 2 (Medina, J. Elsner), Rim 5 (E. Cantrell 3, Chandler, Murray). Total fouls — Cas 17, Rim 14. Fouled out — None. Technical fouls — None				

Nov. 27 games

Nampa Christian 62

Homedale 31

HOMEDALE (31)

Corta 2 0-0 4, Warwick 3 2-2 10, Wheeler 1 0-2 2, Tackett 0 0-1 0, Johnson 2 0-2 4, J. Hall 0 1-2 1, Marks 0 1-2 1, C. Hall 0 1-2 1, Mackenzie 0 0-0 0, Rupp 2 0-0 4, Brown 1 0-0 2, Brasher 1 0-0 2. Totals 12 5-13 31

NAMPA CHRISTIAN (62)

Baughman 0 1-2 1, Downs 2 0-0 4, Puga 0 1-1 1, Hoaglund 1 2-2 4, Caldwell 3 3-4 9, Pridden 4 1-2 10, Vander Hock 2 1-2 5, Myers 3 2-2 10, Bruner 2 2-4 6, Schaub 6 0-0 12. Totals 23 15 62

Homedale	2	3	5	7	17	— 31
Nampa Chr.	11	18	19	14	— 62	

3-pointers — Hom 2 (Warwick 2), NC 3 (Myers 2, Pridden). Total fouls — Hom 14, NC 13. Fouled out — None. Technical fouls — None

- **Robin Aberasturi**
Escrow Officer
- **Vicky Ramirez**
Bilingual Assistant

Looking back...

from the files of The Owyhee Avalanche and Owyhee Chronicle

25 years ago

December 2, 1981

Many elections next week

Many of the taxing district elections, set for Monday and Tuesday, will be run without candidates, according to interviews with clerks and secretaries of the districts this past week.

The districts voting on Monday, the positions open, the term, and the candidates are:

Homedale Highway District, Sub-district 2, one 4-year term, Donald Townsend, incumbent, and Fred Demshar;

Homedale Rural Fire Protection District, Owyhee County sub-district, commissioner at-large, one 4-year term, John Kushlan;

Marsing-Homedale Cemetery Maintenance District, Sub-district 3, one 4-year term, Harold Biggs;

Marsing Rural Fire Protection District, Sub-district 1, one 4-year term, Orville Bish; commissioner at-large, one 4-year term, Jerry Floyd;

Gem Highway District, Sub-district 1, one 4-year term, Cyril Lootens, incumbent; Sub-district 2, one 4-year term, Glenn Salmeir, incumbent;

Wilder Cemetery District, Sub-district 1, one 4-year term, Robert Hugg, incumbent; Sub-district 2, one 4-year term, Orville Butler, incumbent;

Wilder Rural Fire Protection District, Sub-district 2, one 4-year term, Peter Austin; Sub-district 3, one 4-year term, Alan Noe;

Golden Gate Highway District, Sub-district 1, one 4-year term, Robert Huff, incumbent, Steve Paul, and Raymond a. McMahon; Sub district 2, one 4-year term, Bob L. Dennis, incumbent, and Donald Comfort;

Bruneau Cemetery District, director, one 3-year term, Grant Strickland, incumbent;

Grand View Rural Fire Protection District, Sub-district 2, one 4-year term, George L. Bennett; director at-large, one 4-year term, Melvin A. Chandler;

Riverside Cemetery District, Sub-district 1, one 4-year term, Al Pennington, incumbent;

Owyhee Pioneer Cemetery District, Sub-district 3, one 4-year term, no filings.

Irrigation districts holding Tuesday elections include:

Opaline Irrigation District, Sub-district 2, one 3-year term, Roger Sevy, incumbent;

Reynolds Irrigation District, director at-large, one 4-year term, no filings;

Grand Vie Irrigation District, director a- large, one 3-year term, no filings;

Snake River Irrigation district, director at-large, one 3-year term, no filings.

Recognitions, awards presented at banquet

The Owyhee County 4-H Recognition Banquet was held November 13 at Rimrock Jr.-Sr. High School. 4-H’ers were honored for outstanding project work.

Kim Cunningham of Grand View was mistress of ceremonies for the event. Julie Perkins, Bruneau led the pledges. Steve Agenbroad gave the invocation.

County 4-H medals were presented by Vivian Gottsch, Chairman of the 4-H Council. P.T. Rathbone of the Owyhee County Fair Board, presented the Fair Boards Awards.

Dorothy Gottsch of Grand View was selected First Security Watch award for Owyhee County. Mr. Ellwood Webb, Manager of the First Security Bank presented the award at Friday’s 4-H recognition banquet.

Dorothy has been an outstanding 4-H member. She has completed numerous 4-H projects in Clothing, Foods, Child Development and Leadership. She has been an active participant in the county 4-H Demonstration Contest has won top honors both at county and district levels.

Dorothy has received numerous 4-H awards, including, the Linda Cegnar Award, the Lootens Award, Owyhee County Fireboard Award, plus many others.

50 years ago

December 6, 1956

Kiwanis club members visit Union Pacific ag car

Homedale Kiwanis club members visited the Union Pacific agricultural car Wednesday preceding their regular dinner meeting at the El Gavilan.

Leroy Fuller, Union Pacific agricultural agent, showed Kiwanians through the car. He said the car had been operating for 10 years and travels bout six months of every year, showing to between 10,000 and 15,000 people each year.

The car is equipped with a 30-volt generator for producing electricity for lights, fan circulator and air conditioning in summer. A converter must be used for operating 110-volt equipment such as the movie projector.

A kitchen, shower and three bunks are provided for the men traveling on the car.

Everett Davis, extension agricultural engineer of the University of Idaho, Moscow, showed models of recommended farm buildings, including a utility shed built with poles, with aluminum roofing and galvanized sheet metal or wood siding on two sides.

He also showed a model cattle feed shelter with center trough, a pole corral, a potato storage cellar and bunker silo.

A film “Put It On Poles” was shown. Leaflets and pamphlets of all kinds were available at the agricultural car.

At the business meeting following luncheon the club agreed to sponsor the x-ray mobile unit which will be in Homedale three days beginning Friday, December 14. Cy Radcliffe is chairman of a committee of the whole.

The club agreed to give \$5 toward the Jaycee Christmas lighting contest.

George Wolff, chairman of the committee arranging for Christmas baskets, reported that the club will give baskets again this year to families who can use help. School children will again be asked to bring food or usable toys to help fill the Christmas boxes. Their plan met with considerable success last year.

The club has set its ladies night and installation of new officers for Wednesday, January 9 at El Gavilan. District Lt. Gove. Francis Ellis of Weiser will be a guest.

John Lane goes to Ft. Ord., Calif. for 6 months duty

Pvt. John M. Lane, 17, is the first man from the local unit of the 123rd transportation battalion of the Idaho National Guard to take advantage of a six-month training program of active duty with the Army at Fort Ord, Calif.

The six months training for enlistees of the National Guard is primarily for the purpose of having each and every unit filled with as many trained and qualified personnel as possible, according to Sgt. Elmer Moore, administrative assistant of the local unit.

This training has recently been approved by the National Guard Bureau for members of the National Guard units to better their training within the units.

Private Lane, who enlisted November 24, is one of 15 men in Idaho to take this training course.

He attended Homedale high school until leaving school to take this training course, and was a star center on the Trojan football team this fall.

Jaycees sponsor Christmas lighting contest again

The Jaycees will again sponsor the Christmas light contest this year in an effort to help in promoting a Christmas spirit through decoration with lights.

According to Rich Taylor, chairman of the event, the contest will be divided into three divisions which include window display, small lawn and large lawn displays with two prizes to be awarded in each division. This applies to both city and rural areas.

A grand prize winner will be chosen out of the entire entries, and this winner will have the opportunity to be entered in the General Electric’s Nationwide Christmas lighting contest.

140 years ago

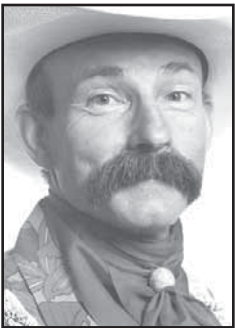
December 1, 1866

THE COUNTY SEAT. We presume it will not be seriously controverted that the time is fully ripe when the County Seat of Owyhee County should be removed from its present location in Ruby, to the more populous, as well as more central town of Silver. Argument on this point to anyone acquainted with the situation would be entirely superfluous. That the Legislature, during the present session, will pass a law locating the County Seat at Silver will hardly be doubted. The question of most importance, then, in this connection, is that one relating to the time in the session that the law should be passed. Should the Seat of Government be fixed at Silver before the severity of winter sets in, a material advantage to a great majority of the citizens of the county would be obtained by the removal of the post office to the population every county seat being entitled to a post office. Much inconvenience is experienced, and has been for a long time, not only by the residents of Silver, but by those of the precincts of Asby, Oro Fino, Hays & Ray, Flint, Hall’s Ranch, Sinker Creek, and all the outside camps in the County, except Ruby, Reynolds Creek and Boonville. There being but one Post office in the county renders it obligatory on these people to send to Ruby for their mail matter, where they rarely have any business unless it be to get their mail, or in convection with some of the county offices. Every mercantile house that still continues business in Ruby has a branch in Silver, and the people are removing every week from Ruby to Silver. We have taken the pains to hunt up the official vote of the various precincts, as shown in the late election for delegate to Congress, and found those whose interest are with Silver to be as follows: Silver City 535, Asby 75, Oro Fino 66, Hays & Ray 44, Flint 64, Hall’s Ranch 36, Sinker Creek (didn’t vote) about 50; making 870. Those in favor of Ruby, as follows: Ruby City 199, Reynolds Creek 30, Boonville 77; making 306 – majority in favor of Silver, 564. Since the election, Boonville has been nearly abandoned, there being as we understand, but one white man left in the place. We hear some talk about expense in connection with the removal of the County Seat; which will hardly cut much of a figure when it is remembered that the County pays for the Recorder’s office alone, in Ruby, a rent of \$175 per month, when the premises would hardly command double that amount if sold under the hammer to-day. As to the jail, it is hardly fit to stable horses in, and would be no sacrifice if destroyed utterly; besides the expense of conveying prisoners from Silver would soon build a better one, if applied to that purpose. The presence of the ministerial officers of the peace is constantly required in Silver, where nearly all the excitement and life of the camp is concentrated, and where, as a consequence, there are many more violations of law and breaches of the peace than in Ruby, where they are at present compelled by law to reside. The principal hotel, which has hither to been the chief attraction in Ruby, is being removed to Silver; the stages will follow. Wells, Fargo & Co., all the assay offices and nearly all business of the County of a public character, except that required by law to remain in Ruby, is done in Silver.

With growing interest in Flint District, business is moving upstream in the direction of the mines and mills. The new road to Ives Canon, through Flint, will be completed in early spring, bringing stages from Chico and the railroad in above Silver, thus concentrating all transient interest, as well as permanent, at this point. Boise stages will come in at the N.Y. & O mill next summer, thence direct to the Morning Star mill, making it unnecessary to pass through Ruby at all. Several residents of Ruby have a permanent interest in the prosperity of the County, and seeing these inevitable tendencies, and recognizing these inexorable results so short a distance in the future, have determined not to shut their eyes upon the verdict of destiny, or close their ears to the logic of events, but to reconcile themselves to the decrees of fate and march in the procession of progress to the goal of greatness towards which the country is advancing with strides so rapid that he who pulls back or lags behind will be lost in the race and obscured by the dust from the wheels of the chariot of the conqueror.

Commentary

Baxter Black, DVM



On the edge of common sense FFA legacy

They stood before me as I was signing books in my booth at the National FFA Convention this fall in Indianapolis. The man showed his age but was still holding up. “This is gonna be my last,” he said.

I looked at him more attentively. “How long have you been teaching vo-ag?” I asked.

“Thirty-eight years,” he said. There was a touch of weariness in his voice. We looked out over the sea of blue coats that surged through the huge convention hall. His wife took our picture. “That’s a long time to be married to an ag teacher.” I told her, knowing the commitment a spouse must make to accommodate the late suppers, kids’ projects, county fairs, field trips, night calls, weekend practices, long hours and exhaustion that are an accepted requisite of the job description.

She smiled and touched his elbow. “It was worth it,” she said and they walked away.

The very next person extended her hand. She had a broad smile. If I had not seen her advisor button, it would have been easy to mistake her for one of the older students.

“Hi,” she said. She was excited, “Would you sign my book?”

“How long have you been teaching vo-ag?” I asked.

“This is my first year, my first time as an advisor to come to the convention. I’ve been here three years before as a student. We’ve brought 23 kids, two in public speaking, a judging team ...” she rattled on as I signed her book.

“Thanks,” she said, shook my hand firmly and disappeared into the crowd.

A warm feeling slid down my back. I actually chuckled out loud.

I often have occasion in my travels to remind vo-ag teachers of the responsibility they bear. Maybe they know it already, but I think their job is so hectic trying to balance teenage insecurities, practical real-life educational subjects, and personal obligations, that they don’t have time to mull over the profound effect they have on their students.

I believe teaching school is a noble calling. And ag teachers take it a step beyond because they are in the position to shape the professional life choices as well as the character of pliable minds.

They say there were 50,000 attendees to the FFA convention. Fifty thousand kids dressed nice, behaving responsibly, treating adults politely, not trashing hotels, yelling profanity or abusing the hospitality of our Indianapolis hosts. The locals noticed and commented over and over about what a great group the FFA was.

To you folks in Indianapolis, Thank you, but you can thank that advisor who has given 38 years of his life to that end. And you can expect that new first-year advisor to follow in his footsteps.

That sea of blue coats is their legacy. They leave the world a better place. And they have a right to be proud.

Letters to the editor

All letters to the editor submitted to The Owyhee Avalanche must be no longer than 300 words, signed and include the writer’s address and daytime phone number.

The deadline for submitting letters is noon on Friday. Letters can be submitted in the these ways: E-mailed to jbrowneditor@cableone.net, faxed to (208) 337-4867, mailed to P.O. Box 97, Homedale ID, 83628, or dropped off at the Avalanche office at 19 E. Idaho Ave., in Homedale.

For more information, call (208) 337-4681.

Wayne Cornell

Not important ... *but possibly of interest*



Cat that goes bump in the night

Ivy the Cat, who once hung around outside my mother-in-law’s house, came to live with us after her host passed away. Ivy has been with us for almost a decade. And sometime during that period she decided that she is my cat, or I am her human — I’m not sure which.

My relationship with Ivy reached a new plateau several months ago by accident. Just before bedtime, I picked Ivy up. As usual, she let out an irritated meow (Actually, Ivy likes being held — she just feels she should complain for the record.). Holding the cat close, I scratched the top of Ivy’s head with my chin, something she really enjoys. She purred.

After rubbing Ivy’s head for a while, I put her back on the floor. She sat by my feet, meowing loudly. Finally, in an attempt to get her to knock off the caterwauling, I nudged her in the rear with my foot. She responded by taking a swipe at me with her paw (which has claws). I gave her another boot and she took another swing. So, I scooped her up again to explain to her that her conduct was unacceptable. That’s when I noticed Ivy was purring even louder than before. She apparently liked being kicked.

My go-round with Ivy turned into a nightly ritual. Just before lights out, she positions herself to be picked up and get her head scratched. Then back on the floor to be kicked a little. Then back up for additional petting and purring.

A couple of nights ago, I was involved in a project. I didn’t go to bed until some time after my Partner in Life. I also didn’t get around to scratching and kicking Ivy.

I slipped into bed about 11 p.m. Sleep started to take hold. I was drifting. ...

Thump! I was snapped back from dreamland as something landed on the bed next to my feet. I tried to focus my eyes on the shadow.

“Meeow!”

“Get down you stupid cat!” I advised. Ivy jumped down from the bed and disappeared.

The clock indicated it was 11:30. It took some time for me to calm down. Eventually, however, I started to drift off again. ...

Thump! Bump! Rattle! I raised my head from my pillow. It was a few minutes after midnight. I searched for the source of the sound. The bi-fold closet door beyond the foot of the bed was slowly opening. A closer inspection revealed Ivy was sticking her paw under the door, hooking it with her claws and pulling. Each time she pulled, the door opened a few more inches.

“Get out of here, you %@*& cat!” Ivy dashed out of the room and ran off down the hall sounding like a small pony.

Getting to sleep was harder this time. I was mad at the cat, and mad that I was going to get one hour less sleep before time to go to work.

12:30: Scratch, scratch, scratch! Ivy was in the closet, apparently trying to rearrange things on the floor so she would be more comfortable. I looked for something to throw. By the time I found a missile, she had fled.

12:50: THUMP! “MEOOW!” Ivy was back on the bed, just long enough to ascertain that I was awake. Before I could respond, she jumped clear and dashed out of the room.

“You look tired,” my mate said the next morning as I drank a cup of coffee before leaving the house. I said I was tired and it was all because of the %*&#@ cat!

“Did you guys go though your ritual last night?” she asked.

“No.”

“Maybe that’s why Ivy was acting up,” she said.

Since my short night, I have made sure to scratch Ivy’s head and kick her in the butt before going to bed. Her response has been to leave me alone after the lights go out.

Cats are strange.

From Washington Vigilance enhances school safety

by Sen. Mike Crapo

“It was a little group but they were part of the school. They dressed differently and they acted differently. They always dressed in black, usually in trench coats. I never saw them threaten anybody or bully anybody, but we avoided them because they were different. ... I’m angry someone would do this to us. There are lives ruined, families ruined, and our whole school year is ruined.”

— **Columbine High School student**



Sen. Mike Crapo

These words reportedly were spoken seven years ago in the aftermath of the worst school shooting in U.S. history. Since that time, there have been more tragedies like Columbine, perpetrated by students and strangers alike. Widespread concern over school safety prompted a recent National Conference on School Safety sponsored by the U.S. Department of Education and the U.S. Department of Justice. States and communities nationwide are recharging efforts to highlight the issue.

While Idaho schools remain some of the safest in the nation, it’s important to practice vigilance and preparedness for our children’s safety.

According to the Idaho State Department of Education Safe and Drug Free Schools program, during the 2003-04 school year in grades K-12, there were:

- 4,312 incidents of student harassments;
- 3,560 incidents of student bullying;
- 6,537 incidents of student fights;
- 18,170 incidents of student insubordination;
- 10 guns found on school grounds;
- 278 knives brought to school.

While Idaho’s incidents of school violence are below the national average, school violence is an issue facing communities today. Prevention, planning and awareness are critical to keeping our children safe at school.

Most Idaho schools, urban or rural, are strongly supported by the communities that they serve. Many have coordinated emergency plans with local law enforcement, fire and rescue and local government officials. For the past three years, the Idaho Peace Officers Standards and Training Academy in Meridian under the Idaho State Police has used federal grant money to train Student Resource Officers (SRO). SROs are trained specifically in school policing for grades K-12. The officers are trained in traditional law enforcement capacities as well

— continued on next page

Commentary

Accuracy in Media Iraqi death toll report skewed by politics, methodology

by Roger Aronoff

In October a report was released in Lancet magazine to much fanfare that some 655,000 violent “excess deaths” in Iraq had occurred since the start of, and because of, the war. The report, produced by the Johns Hopkins Bloomberg School of Public Health, is so far off of other estimates that it appears badly flawed on its face. But its timing made it even more suspect, as it came out just weeks before an important midterm election in the U.S., and could have had the impact of undermining the war effort. The same group had previously issued another report, this one just before the 2004 presidential election, which also had figures that were suspect.

The new report, which claimed to have used standard and accepted sampling techniques, stated that the estimate could be off by a quarter of a million people, meaning a low of 400,000 and a high of 900,000.

But many questions were immediately raised by the release of this report, including the timing, the political affiliations of the main people behind the report, and the credibility of the numbers. Not surprisingly, it took very little time for it to be reviewed and trumpeted by Al-Jazeera, which accepted its validity and claimed that “the propaganda machine” — meaning the U.S. government — “started to work full-time to discredit it as it did with the other Lancet study published in 2004.”

While it is not surprising that Al-Jazeera’s anti-American bias would lead it to embrace the report, the Washington Post was also taken in, quoting only people who happen to believe the report was reliable, while failing to note the political donations and activities of some of its named sources. Once again, fortunately, the blogosphere weighed in with review and analysis that the major media apparently didn’t have time for.

The Political Pit Bull, acting as truth detector, turned up the fact that the lead author of the Johns Hopkins report, Gilbert Burnham, as well as Ronald Waldman, an epidemiologist at Columbia University who had vouched for its methodology, had been donors to Democratic politicians, including John Kerry for president in 2004, and to Les Roberts. Who’s he? Roberts was the author of the 2004 Lancet report.

It also links to a video on the blog Little Green Footballs showing Richard Horton, the editor of Lancet, speaking at a political rally in September calling for an end to the war and to Tony Blair’s rule. In his speech, Horton said, “As this axis of Anglo-American imperialism extends its

influence through war and conflict, gathering power and wealth as it goes so millions of people are left to die in poverty and disease.” The politics of the people involved in this study should have been made clear up front.

As to the study itself, several articles have done an excellent job in showing why this report should not be trusted, besides the politics lurking behind it. Steven E. Moore, in an article for the Wall Street Journal, describes the “cluster sampling” used for the study. Cluster sampling is the standard methodology that he says he and other researchers use in developing countries.

He describes “cluster sampling” as follows: “... for a country lacking in telephone penetration, door-to-door interviews are required: *Neighborhoods* are selected at random, and then individuals are selected at random in ‘clusters’ within each neighborhood for door-to-door interviews. Without cluster sampling, the expense and time associated with travel would make in-person interviewing virtually impossible.”

The problem, as Moore points out, is the number of clusters they use. In this case, it was 47, which he states is far too few to be reliable. He cites other surveys with far more clusters, and with radically different results, and concludes that the Johns Hopkins survey is “highly unlikely” to be representative of the Iraqi population. Moore was also surprised to find that the survey didn’t ask any demographic questions. “Without demographic information to assure a representative sample,” wrote Moore, “there is no way anyone can prove — or disprove — that the Johns Hopkins estimate of Iraqi civilian deaths is accurate.”

Jim Lacey, writing in the Nov. 6, 2006 issue of National Review, asks if it is “really credible that the most intensely focused media gaze in the history of warfare overlooked more than 600,000 deaths.” The Hopkins report stands in stark contrast to that of the Iraqi Body Count Project (IBCP), another anti-war group that has generally been considered by all sides to be the most accurate. It estimates that at the time of the latest Hopkins report, the real death toll stands at around 48,800, one-fifteenth of what the Lancet/Hopkins report states.

Lacey also questions that even if we can trust the directors of the study, which is questionable, “what reason do we have to believe the same of the Iraqis they employed to conduct their surveys? It’s far from inconceivable that some would lie to make the U.S. look bad.”

Lacey points out that the death rate in Iraq assumed by

the Lancet study, before the war began in March of 2003, is 5.5 out of every 1,000. He says that number is almost certainly wrong. For one thing, they only looked at the 14 months preceding the March 2003 invasion of Iraq, a period when Saddam Hussein was forced to be on his best behavior. And it is considerably lower than the death rate in the U.S., and such death rates usually correlate with the wealth of a society. “If Iraq’s GDP (gross domestic product) is used to provide a more realistic estimate of the pre-war death rate,” writes Lacey, “600,000 of the study’s estimated deaths are erased. The number left over is close to the number given by IBCP, whose estimate is looking more reliable all the time.”

Furthermore, if one applies the World Health Organization’s (WHO) pre-war child-mortality rate (130 per 1,000) and average life expectancy in Iraq (51 years), and compares it to today’s statistics, in which child-mortality rate is at 35-in-1,000 while the average life expectancy has improved to 69 years, then it is very likely that the invasion — the liberation — of Iraq, has saved lives, perhaps as many as 2 million.

Lacey challenges the authors of the Lancet study to either prove that the WHO numbers are wrong, or “to explain how a nation’s death rate can double while its life expectancy grows by 18 years.” The WHO numbers are logical, considering all of the billions of dollars the U.S. has put into Iraq’s health system and the rebuilding of hospitals.

But there’s another important question: of the deaths in Iraq, how many were killed by the so-called insurgents, and how many of those killed were the insurgents themselves? The study, according to Lacey, doesn’t make those distinctions.

Certainly any deaths of innocent Iraqis are tragic and should be avoided as much as possible. But in reality, this war, like others before it, has to be viewed in the context of what is being accomplished and how many lives may be saved in the long run.

If Iraq becomes a democracy, and no longer brutalizes its own people, and becomes an ally with us in the war on global terror and radical Islam, then this will have to be considered a just and necessary war; a noble cause well worth fighting.

— Roger Aronoff is a media analyst with *Accuracy in Media*, and is the writer/director of “*Confronting Iraq: Conflict and Hope*.”

✓ Washington

as counseling, mentoring and leadership. In addition to providing a law enforcement presence at a school, SROs get to know the students and develop trust relationships. This helps to combat crime before it happens and the officers serve as positive role models. More than 100 SROs serve Idaho schools today, including Michelle Babcock in the Homedale School District.

The Department of Justice Office of Juvenile Justice and Delinquency Prevention provides grants to the Idaho State

Department of Education for prevention and intervention programs to promote school safety and reduce violence among children. The Idaho State Department of Education also has multiple resources for parent involvement in education and violence prevention.

Idaho experts on school safety in law enforcement and education offer the following advice to parents:

- Get involved at school. Work with administrators and local government to protect your schools. Help schools use professional crisis managers from your area to draft, update and implement school safety plans. In a crisis situation, the most effective response is one that is coordinated

community-wide.

- Be involved with your kids in and out of school. Students need to speak up and have their voices heard in a positive way.

Students must be able to talk to an adult confidentially, knowing that this person will maintain the student’s anonymity if they have information about threats to the school or other criminal behavior.

Keeping our children safe at school is a priority for all of us. Safe schools mean safe and secure communities and, as we know already, a better quality of life for families.

— Mike Crapo is a Republican U.S. senator from Idaho.

The Owyhee Avalanche

Owyhee County's best source for local news!!

Public notices

OWYHEE COUNTY COMMISSIONERS MINUTES NOVEMBER 20, 2006
OWYHEE COUNTY COURTHOUSE MURPHY, IDAHO
Present were Commissioners’ Tolmie, Reynolds, and Salove, Clerk Sherburn, Treasurer Richards, Prosecutor Faulks, Jim Desmond and Fred Grant.
The Board amended the agenda to include contract, and agreement.
The Board approved the Sage Grouse projects sent to Idaho Fish and Game.
The Board approved the contract with Whisper Mountain Professional Services to do the Emergency Operations Plan for \$3,000.
The Board approved the Southwest Idaho Resource Conservation and Development Council to do the Hazard Mitigation Planning grant.
The Board approved payment of all outstanding bills in the amount of \$122,660.
The Board deemed Cemetery Lane public from Highway 78 to the cattle guard.
The Board deemed Nighthawk Lane a private road.
The Board took the following action on pending indigent & charity cases:
No. 06-54 the Board approved a lien.
No. 06-45 the Board approved payment with reimbursement.
The complete minutes can be viewed in the Clerk’s office.
/s/Harold Tolmie
Attest:/s/Charlotte Sherburn
12/6/06

NOTICE OF SALE CASE NO. CV-06-05481 IN THE DISTRICT COURT OF THE THIRD JUDICIAL DISTRICT OF THE STATE OF IDAHO, IN AND FOR THE COUNTY OF OWYHEE
CITIMORTGAGE, INC., successor in interest to Principal Residential Mortgage, Inc., Plaintiff,
Vs.
JAMES H. CONRAD (Deceased) and/or the Unknown Heirs, Assigns & Devises of James H. Conrad; and DOES 1-10 as individuals with an interest in the real property legally described as:

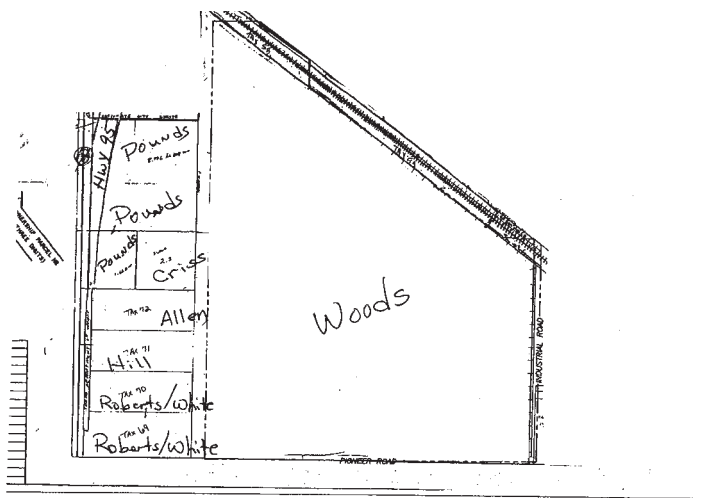
Lot 20 in Block 9 of the Sunset Ranch Subdivision, part of the north half of the Southeast quarter and the Southwest quarter of the Northeast quarter of Section 36, Township 4 North, Range 6 West, Boise Meridian, Owyhee County, Idaho, according to the official plat thereof and of record in the office of the recorder for Owyhee County, Idaho.
Commonly known as: Route 1, Box 3026, Homedale, Idaho, 83628, Defendants.
Under and by virtue of an Order of Sale of Foreclosure entered on October 26, 2006 and Writ of Execution issued on October 18, 2006 out of and under the seal of the above-entitled Court on the Judgment and Decree of Foreclosure recovered in said Court in the above-entitled action on the 13th day of July, 2006, in favor of the above-named Plaintiff, I am commanded and required to proceed to notice for sale to sell at public auction the real property described in said Order for Sale of Foreclosure and Writ of Execution and to apply the proceeds of such sale to the satisfaction of said Judgment

and Decree of Foreclosure with interest thereon and my fees and costs.
The property directed to be sold is situate in Owyhee County, State of Idaho, and is described as follows, to-wit:
Lot 20 in Block 9 of the Sunset Ranch Subdivision, part of the north half of the Southeast quarter and the Southwest quarter of the Northeast quarter of Section 36, Township 4 North, Range 6 West, Boise Meridian, Owyhee County, Idaho, according to the official plat thereof and of record in the office of the recorder for Owyhee County, Idaho.
Commonly known as: Route 1, Box 3026, Homedale, Idaho, 83628.
NOTICE IS HEREBY GIVEN that on the 19th day of December, 2006 at the hour of 2:00 o’clock p.m., at the location of the Owyhee County Courthouse, 20381 State Highway 78, Murphy, Idaho, I will attend, offer and sell at public auction all or so much of the above-described property thus directed to be sold as may be necessary to raise sufficient funds to pay and satisfy the Judgment and Decree of Foreclosure as set out in said Order for Sale of Foreclosure to the highest bidder therefore in lawful money. The time period for redemption of the above property is six (6) months from the date of sale herein.
The Sheriff, by a Certificate of Sale, will transfer right, title and interest of the judgment debtor in and to the property. The Sheriff will also give possession but does no guarantee clear title nor continue possessory right to the purchaser.
DATED This 15th day of November, 2006
GARY AMAN, OWYHEE COUNTY SHERIFF
By: /s/Richard Freund, Deputy Sheriff
11/29;12/6,13/06

SHERIFF’S NO. 20065889 CASE NO. CV 06-3354 IN THE DISTRICT COURT OF THE FIFTH JUDICIAL DISTRICT OF THE STATE OF IDAHO, IN AND FOR THE COUNTY OF TWIN FALLS
METROPOLITAN LIFE INSURANCE COMPANY, a New York corporation, Plainti ff,
vs.
CUMMINS FARMS, INC., et al., Defendant’s.
Under and by virtue of an ORDER OF SALE issued on the 13th day of November, 2006, out of and under the seal of the above-entitled Court on the Adjudication and Decree of Foreclosure recovered in said Court in the above-entitled action on the 2nd day of November, 2006, in favor of the above-named Plaintiff, I am commanded and required to proceed to notice for sale and to sell at public auction the property described in said Order of Sale and to apply the proceeds of such sale to the satisfaction of said Adjudication and Decree of Foreclosure with interest thereon and my fees and costs.
The property directed to be sold is situate in Twin Falls County, State of Idaho; Cassia County, State of Idaho; Blaine County, State of Idaho; and, Owyhee County, State of Idaho and is described in **Exhibits A and B** hereto.
NOTICE IS HEREBY GIVEN, that on the **12th day of December, 2006**, at the hour of **9:00 o’clock a.m.** on the front steps of the Twin

Falls County Courthouse in Twin Falls, I will attend, offer and sell at public auction all or so much of the above-described property thus directed to be sold as may be necessary to raise sufficient funds to pay and satisfy the Adjudication and Decree of Foreclosure as set out in said ORDER OF SALE to the highest bidder therefore in lawful money of the United States of America.
Dated this 15th day of November, 2006
Wayne Tousley, Sheriff of Twin Falls County
J. Walter Sinclair, ISB No. 2243, Email: jwsinclair@stoel.com, Bradley J. Dixon, ISB No. 6167
Email: bjdixon@stoel.com, STOEL RIVES LLP, 101 S. Capitol Blvd., Ste. 1900, Boise, Idaho 83702, Phone: (208) 389-9040 Fax: (208) 389-7500; Andrew A. Guy (Admitted Pro Hac Vice), Email: aaguy@stoel.com, STOEL RIVES LLP, One Union Square, 600 University St., Ste .1600, Seattle, WA 98101, Phone: (206) 624-0900 Fax: (206) 386-7500, Attorneys for Plaintiff

Exhibit A
The land referred to in this Decree is described as follows:
Twin Falls County
A
Township 10 South, Range 19 East, Boise Meridian, Twin Falls County, Idaho, Section 27: W½NW¼SUBJECT TO Highway District right of way. Township 10 South, Range 19 East, Boise Meridian, Twin Falls County, Idaho, Section 28: N½; N½N½SE¼, and that part of the NE¼SW¼ more particularly described as follows: BEGINNING at the Northeast corner of said NE¼SW¼; THENCE West along the North line thereof a distance of 820 feet; THENCE South along a line parallel with the East line thereof a distance of 270 feet; THENCE East along a line parallel with the North line thereof a distance of 820 feet to a point on the East line thereof; THENCE North along said East line a distance of 270 feet to the POINT OF BEGINNING. SUBJECT TO Highway District right of way
B
Township 11 South, Range 19 East, Boise Meridian, Twin Falls County, Idaho, Section 27: A part of the SE¼SE¼ more particularly described as follows: BEGINNING at the Southeast corner of said Section 27; THENCE North 480 feet to the TRUE POINT OF BEGINNING; THENCE West 200 feet; THENCE North 240 feet; THENCE East 200 feet; THENCE South 240 feet to the TRUE POINT OF BEGINNING.
C
PARCEL NO. 2: Township 10 South, Range 19, East, Boise Meridian, Twin Falls County, Idaho
Section 29: The S½; S½NE¼ and all that part of the S½NW¼ lying South of the Twin Falls Canal Company; **EXCEPT** that part of the SW¼NE¼ which lies North of and below the center of the Main Canal of the Twin Falls Canal Company. **AND EXCEPT** that portion of the S½NE¼ and the N½SE¼ described as follows: BEGINNING at the East quarter corner of said Section 29; THENCE running North 0°03' West along the Section line 1320 feet to the Northeast corner of the SE¼NE¼ of said Section 29; THENCE North 89°54' West along the North line of the



NOTICE OF PUBLIC HEARING
Please be advised that a public hearing will be held before the Homedale Mayor and City Council on the 18th day of December, 2006 at 6:00 p.m. at Homedale City Hall, 31 West Wyoming, Homedale, Idaho.
The subject matter of this hearing is the annexation of certain lands into the city limits of Homedale as follows:

Property Description	Owner
Tax 69	Bryce Roberts/Taryn White
Tax 70	Bryce Roberts/Taryn White
Tax 71	Cecil & Evelyn Hill
Tax 72	Bob Allen
See attached map	Pounds Farm, LLC
See attached map	Randy & Christina Criss
See attached map	Ron & Julie Woods

The public is invited to attend and offer input.
Alice E. Pegram, City Clerk
City of Homedale
11/29;12/6/06

S½NE¼ of said Section 29 a distance of 2045 feet;
THENCE South 48°37' West 577 feet; THENCE South 0°03' East 939 feet; THENCE South 9°46' East 260.3 feet; THENCE South 39°4½' East 175.5 feet; THENCE South 44°08' East 117.1 feet; THENCE South 44°07' East 129.6 feet; THENCE South 89°50' East 2155.5 feet to the East line of said Section 29; THENCE North 0°03' West along the Section line 571 feet to the PLACE OF BEGINNING. SUBJECT TO Highway District right of way. **AND ALSO EXCEPT:** Township 10 South, Range 19, East, Boise Meridian, Twin Falls County, Idaho Section 29: A parcel of land in the N½SE¼ more particularly described as follows: COMMENCING at a stone marking the East quarter corner of said Section 29; THENCE running South 0°03' East along the section line for 476.0 feet; THENCE North 89°54' West for 2245.6 feet to the TRUE POINT OF BEGINNING; THENCE North 89°54' West for 230.4 feet where a steel pin was found; THENCE North 0°43½' West along a line previously described as bearing North 0°03' West for 476 feet, more or less, where a steel pin was found; THENCE South 9°46' East for 260.3 feet; THENCE South 39°4½' East for 175.5 feet; THENCE South 44°08' East for 117.1 feet to the TRUE POINT OF BEGINNING.

E
Township 10 South, Range 19, East, Boise Meridian, Twin Falls County, Idaho Section 29: A parcel of land in the N½SE¼ more particularly described as follows: COMMENCING at a stone marking the East quarter corner of said Section 29; THENCE running South 0°03' East along the section line for 476.0 feet; THENCE North 89°54' West for 2245.6 feet to the TRUE POINT OF BEGINNING; THENCE North 89°54' West for 230.4 feet where a steel pin was found; THENCE North 0°43½' West along a line previously

described as bearing North 0°03' West for 476 feet, more or less, where a steel pin was found; THENCE South 9°46' East for 260.3 feet; THENCE South 39°4½' East for 175.5 feet; THENCE South 44°08' East for 117.1 feet to the TRUE POINT OF BEGINNING.
G
Township 11 South, Range 19 East, Boise Meridian, Twin Falls County, Idaho Section 24: NE¼NE¼
EXCEPT that portion of the NE¼NE¼ of Section 24, Township 11 South, Range 19 E., B.M., Twin Falls County, Idaho, lying South and East of the following described line: BEGINNING at a point on the North section line of said section which point lies West a distance of 58 feet from the northeast section corner of said Section; THENCE South 74°34' West a distance of 340 feet; THENCE South 52°40' West a distance of 233 feet; THENCE South 40°10' West a distance of 388 feet; THENCE South 1°24' East a distance of 789.8 feet, more or less, to the South boundary line of said NE¼NE¼ which point is 858.7 feet, more or less, distant westerly from the east boundary line of said Section. SUBJECT TO Highway District right of way. Township 11 South, Range 19 East, Boise Meridian, Twin Falls County, Idaho Section 13: That part of the SE¼SE¼ lying South of Murtaugh Lake **EXCEPT** that portion of the Southeast corner of the SE¼SE¼ of Section 13, Township 11 South, Range 19 E., B.M., Twin Falls County, Idaho, described as follows: BEGINNING at the Southeast section corner of said Section 13; THENCE West 58 feet; THENCE North 51°33' East a distance of 73.8 feet to the east boundary line of said Section; THENCE South 46 feet, more or less, to the POINT OF BEGINNING.
H
PARCEL NO. 1 Township 10 South, Range 19 East, Boise Meridian, Twin Falls County,

Public notices

Idaho Section 29: That portion of N½NE¼ lying South and East of the canal. SUBJECT TO Highway District right of way.

PARCEL NO. 2 Township 10 South, Range 19 East, Boise Meridian, Twin Falls County, Idaho Section 29: That portion of the S½NE¼ and N½SE¼ more particularly described as follows: BEGINNING at the East quarter corner of said Section 29; THENCE running North 0°03’ West along the Section line 1320 feet to the Northeast corner of the SE¼NE¼ of said Section 29; THENCE North 89°54’ West along the North line of the S½NE¼ of said Section 29 a distance of 2045 feet; THENCE South 48°37’ West 577 feet; THENCE South 0°03’ East 939 feet; THENCE South 9°46’ East 260.3 feet; THENCE South 39°4½ East 175.5 feet; THENCE South 44°08’ East 117.1 feet; THENCE South 44°07’ East 129.6 feet; THENCE South 89°50’ East 2155.5 feet to the East line of said Section 29; THENCE North 0°03’ West along the Section line 571 feet to the PLACE OF BEGINNING.

I Township 10 South, Range 19 East, Boise Meridian, Twin Falls County, Idaho Section 27: A parcel of land located in the NW¼NE¼ and the NE¼NW¼ lying North of the Union Pacific Railroad Company right of way and West and South of the U.S. Highway 30 right of way, being more particularly described as follows:

FROM the Northwest corner of Section 27, Township 10 South, Range 19 E., B.M., a distance of 1323.18 feet on a bearing of South 88°52’ East along the North line of said Section 27; THENCE a distance of 25.00 feet on a bearing of South 0°37’ West to a point on the South right-of-way line of U.S. Highway 30, this being the POINT OF BEGINNING; THENCE from this point of beginning a distance of 527.10 feet on a bearing of South 0°37’ West to a point on the North right-of-way line of the Union Pacific Railroad Company; THENCE a distance of 1760.25 feet on a bearing of South 83°41.5’ East along the North right-of-way line of said railroad; THENCE a distance of 217.28 feet along a spiral curve to the right with a spiral angle of 2°06’ along the North right-of-way line of said railroad; THENCE a distance of 244.02 feet along a circular curve to the right with a central angle of 4°43’, a radius of 2964.8 feet, and a tangent of 114.37 feet along the Southwest right-of-way line of U.S. Highway 30; THENCE a distance of 228.12 feet along a circular curve to the left in a Northwesterly direction with a central angle of 9°40’, a radius of 1352.5 feet, and a tangent of 114.37 feet along the Southwest right-of-way line of U.S. Highway 30; THENCE a distance of 30.00 feet on a bearing of North 51°29.5’ East along a Northwest right-of-way line of U.S. Highway 30; THENCE a distance of 1243.73 feet along a circular curve to the left in a Northwesterly direction with a central angle of 51°32.4’, a radius of 1382.5 feet, and a tangent of 667.43 feet along the Southwest right-of-way line of U.S. Highway 30; THENCE a distance of 25.0 feet on a bearing of North 1°02.5’ East along a West right-of-way line of U.S. Highway 30; THENCE a distance of 1018.42 feet on a bearing of

North 88°52’ West along the South right-of-way line of U.S. Highway 30 to the POINT OF BEGINNING.

M Township 10 South, Range 19 East, Boise Meridian, Twin Falls County, Idaho Section 27: SW¼ Section 28: S½N½SE¼; S½SE¼; SW¼ EXCEPT that portion of the NE¼SW¼, more particularly described as follows: BEGINNING at the Northeast corner of said NE¼SW¼; THENCE West along the North line thereof a distance of 820 feet; THENCE South along a line parallel with the East line thereof a distance of 270 feet; THENCE East along a line parallel with the North line thereof a distance of 820 feet to a point on the East line thereof; THENCE North along said East line a distance of 270 feet to the POINT OF BEGINNING. Section 33: ALL Section 34: W½ ALL SUBJECT TO Twin Falls County highway right of way. Township 11 South, Range 19 East, Boise Meridian, Twin Falls County, Idaho Section 3: Lots 3 and 4 and the SW¼NW¼ Section 4: N½ ALL SUBJECT TO Twin Falls County Highway Right of Way.

Q Township 11 South, Range 19 East, Boise Meridian, Twin Falls County, Idaho Section 26: Part of the NE¼SE¼ more particularly described as follows: BEGINNING at the East quarter corner of Section 26, said corner marked by a □” rebar which shall be the POINT OF BEGINNING; THENCE South 00°00’00” East along section line for a distance of 600.00 feet to a ½” rebar; THENCE North 89°30’09” West for a distance of 225.00 feet to a ½” rebar; THENCE North 00°00’00” East for a distance of 600.00 feet to a ½” rebar on the North line of the NE¼SE¼; THENCE South 89°30’09” East along the North line of the NE¼SE¼ for a distance of 225.00 feet to the POINT OF BEGINNING. **SUBJECT TO** a 25-foot-wide county road right of way along the East side.

R **PARCEL NO. 5** Township 11 South, Range 19 East, Boise Meridian, Twin Falls County, Idaho Section 9: SE¼ SUBJECT TO Highway District right of way.

PARCEL NO. 10-6 Township 11 South, Range 19 East, Boise Meridian, Twin Falls County, Idaho Section 12: All that part of the SW¼ lying West of Highway No. 30, in Twin Falls County, Idaho **EXCEPT** a parcel of land located in the E½SW¼ more particularly described as follows: COMMENCING at the Southeast section corner of Section 12, Township 11 South, Range 19 E., B.M.; THENCE North 68°25’55" West 3433.92 feet; THENCE South 89°42’15" West 11.04 feet to the REAL POINT OF BEGINNING; THENCE continuing South 89°42’15" West 349.96 feet; THENCE North 00°08’53" East 74.99 feet; THENCE North 89°51’15" East 25.00 feet; THENCE North 00°58’55" East 180.00 feet; THENCE North 87°41’50" East 198.01 feet; THENCE South 25°22’03" East 289.04 feet to the REAL POINT OF BEGINNING. **AND EXCEPT** BEGINNING at a point which is 25.0 feet North of the South quarter corner of Section 12, Township 11 South, Range 19 E., B.M., and lies at the intersection of the county road North right-of-way boundary with the East boundary line of the

SW¼ and Section 12; THENCE running North 89°29’ West along said North right-of-way boundary 840.00 feet THENCE running North 45.0 feet; THENCE running North 89°29’ West and parallel to said county road North right-of-way boundary 260.0 feet; THENCE running North 545.0 feet THENCE running South 89°29’ East and parallel to said road North right-of-way boundary 891.2 feet, more or less, to the intersection with the South right-of-way boundary of U.S. Highway No. 30; THENCE running Southeasterly along said South U.S. Highway No. 30 right-of-way boundary on a 3° curve 281.0 feet, more or less, to the point of intersection with the East boundary of the SW¼ of said Section 12; THENCE running South along the boundary of said SW¼ 391.9 feet, more or less, to the POINT OF BEGINNING. **AND EXCEPT** That part of the SW¼ of Section 12, Township 11 South, Range 19 E., B.M., more particularly described as follows: COMMENCING at the Southwest corner of Section 12; THENCE 932 feet East along the South boundary of the SW¼ of Section 12; THENCE North parallel to the West boundary of the SW¼ of Section 12, 466 feet; THENCE West 932 feet, more or less, parallel to the South boundary of the SW¼ to the West boundary of the SW¼ of Section 12; THENCE South along the West boundary 466 feet to the POINT OF BEGINNING. **AND ALSO EXCEPT** That part of the SE¼SW¼ described as follows: COMMENCING at the South quarter corner of Section 12; said point lies South 89°26’17" East 2633.17 feet from the Southwest corner of Section 12; THENCE North 00°22’39" East 418.55 feet along the East boundary of the SW¼ of Section 12 to a point on the Southwesterly right of way of U.S. Highway 30, Project No. N.R.H. 23-0; THENCE along a curve right on said right of way: Δ -08°07’39"; R -1960.00 feet; Δ -278.03 feet; C -277.80 feet; T -139.25 feet; LCB -North 44°26’19" West to the POINT OF BEGINNING; THENCE North 89°26’17" West 712.26 feet; THENCE North 01°50’22" East 634.48 feet; THENCE South 89°54’12" East 315.19 feet to the Southwesterly right of way on said Highway; THENCE South 25°07’46" East 224.55 feet along said right of way; THENCE along a curve left on said right of way: Δ -15°14’43"; R -1960.00 feet; Δ -521.51 feet; C -519.98 feet; T -262.31 feet LCB -South 32°45’08" East to the REAL POINT OF BEGINNING. **ALSO:** Township 11 South, Range 19 East, Boise Meridian, Twin Falls County, Idaho Section 12: Part of the SW¼ more particularly described as follows: BEGINNING at the South quarter corner, said corner marked by a 5/8 rebar; THENCE North 00°08’49" West for a distance of 418.55 feet to the south right of way of State Highway 30; THENCE along said right of way along a non-tangent curve to the right for a distance of 799.70 feet to a ½” rebar, said curve having a radius of 1960.00 feet and a central angle of 23°22’38" and a long chord bearing of North 37°19’37" West for a distance of 794.16 feet; THENCE North 25°38’18" West (North 25°07’46" West rec.) along said right of way for a distance of 224.55 feet; THENCE South 89°34’08" West (North 89°54’12" West rec.)

for a distance of 411.19 feet to the POINT OF BEGINNING; THENCE South 00°03’11" West (South 00°33’43" West rec.) for a distance of 169.30 feet; THENCE South 89°57’45" East (South 89°26’17" East rec.) for a distance of 28.97 feet; THENCE South 00°01’32" West (South 00°33’43" West rec.) for a distance of 21.27 feet; THENCE South 89°34’48" West for a distance of 117.12 feet to a ½” rebar; THENCE South 89°34’48" West for a distance of 621.88 feet to a ½” rebar; THENCE North 00°30’18" West for a distance of 173.95 feet to a ½” rebar; THENCE North 89°34’48" East for a distance of 621.88 feet to a ½” rebar; THENCE North 78°58’34" East for a distance of 91.54 feet to the POINT OF BEGINNING. **INCLUDING** a 5.00-foot-wide irrigation easement parallel with, adjoining, and West of the entire West boundary of the above-described parcel. **SUBJECT TO:** A 5.00-foot-wide irrigation easement parallel with, adjoining and East of the entire West boundary of the above described parcel. **AND ALSO:** Township 11 South, Range 19 East, Boise Meridian, Twin Falls County, Idaho Section 12: Part of the SW¼, more particularly described as follows: BEGINNING at the South quarter corner of said Section 12, said corner marked by a 5/8” rebar; THENCE North 00°08’49" West for a distance of 418.55 feet to the South right of way of State Highway 30; THENCE along said right of way, along a non-tangent curve to the right for a distance of 799.70 feet to a ½” rebar, said curve having a radius of 1960.00 feet and a central angle of 23°22’38" and a long chord bearing of North 37°19’37" West for a distance of 794.16 feet; THENCE North 25°38’18" West (N.25°07’46" W. rec.) along said right of way for a distance of 224.55 feet; THENCE South 89°34’08" West (N.89°54’12" W. rec.) for a distance of 411.19 feet to a point; THENCE South 00°03’11" West (S.00°33’43" W. rec.) for a distance of 169.30 feet; THENCE South 89°57’45" East (S.89°26’17" E. rec.) for a distance of 28.97 feet; THENCE South 00°01’32" West (S.00°33’43" W. rec.) for a distance of 21.27 feet; THENCE South 89°34’48" West for a distance of 117.12 feet to a ½” rebar, being the POINT OF BEGINNING; THENCE South 00° West for a distance of 174 feet; THENCE South 90° West for a distance of 622 feet, more or less; THENCE North 174 feet, more or less, to an existing ½” rebar; THENCE East 622 feet, more or less, to the POINT OF BEGINNING. **TOGETHER WITH AND SUBJECT TO** an easement lying within Section 12, Township 11 South, Range 19 East, Boise Meridian, Twin Falls County, Idaho, being more particularly described as follows: BEGINNING at the South quarter corner of said Section 12, said corner marked by a 5/8” rebar; THENCE North 00°08’49" West for a distance of 418.55 feet to the South right of way of State Highway 30; THENCE along said right of way, along a non-tangent curve to the right for a distance of 799.70 feet to a ½” rebar, said curve having a radius of 1960.00 feet and a central angle of 23°22’38" and a long chord bearing of North 37°19’37" West for a distance of 794.16 feet;

THENCE North 25°38’18" West (N.25°07’46" W. rec.) along said right of way for a distance of 224.55 feet; THENCE South 89°34’08" West (N.89°54’12" W. rec.) for a distance of 411.19 feet to the POINT OF BEGINNING; THENCE South 00°03’11" West (S.00°33’43" W. rec.) for a distance of 169.30 feet; THENCE South 89°57’45" East (S.89°26’17" E. rec.) for a distance of 28.97 feet; THENCE South 00°01’32" West (S.00°33’43" W. rec.) for a distance of 21.27 feet; THENCE South 89°34’48" West for a distance of 117.12 feet to a ½” rebar; THENCE North 00°30’18" West for a distance of 173.95 feet to a ½” rebar; THENCE North 78°58’34" East for a distance of 91.54 feet to the POINT OF BEGINNING. **TOGETHER WITH AND SUBJECT TO** an easement described as: Township 11 South, Range 19 East, Boise Meridian, Twin Falls County, Idaho Section 12: A part of the SW¼ more particularly described as follows: BEGINNING at the South quarter corner of Section 12, said corner marked by a 5/8” rebar; THENCE North 00°08’49" West for a distance of 418.55 feet to the South right of way of State Highway 30; THENCE along said right of way along a non-tangent curve to the right for a distance of 799.70 feet to a ½” rebar, said curve having a radius of 1960.00 feet and a central angle of 23°22’38" and a long chord bearing of North 37°19’37" West for a distance of 794.16 feet; THENCE North 25°38’18" West (N.25°07’46" W. rec.) along said right of way for a distance of 185.87 feet to the POINT OF BEGINNING; THENCE South 89°34’08" West for a distance of 427.96 feet; THENCE North 00°03’11" East (N.00°33’43" E. rec.) for a distance of 35.00 feet; THENCE North 89°34’08" East (S.89°54’12" E. rec.) for a distance of 411.19 feet to the South right of way of State Highway 30; THENCE South 25°38’18" East (S.25°07’46" E. rec.) along said right of way for a distance of 38.68 feet to the POINT OF BEGINNING. **PARCEL NO. 10-7** Township 11 South, Range 19 East, Boise Meridian, Twin Falls County, Idaho Section 12: A parcel of land described as follows: BEGINNING at a point 560 feet North of the South quarter corner of said Section at the intersection of the East line of the SW¼ of said Section with the North line of the right of way of U.S. Highway 30; THENCE North along the quarter section line of said Section a distance of 2,740 feet to the Northeast corner of the S½SE¼NW¼ of said Section 12; THENCE West 1,320 feet to the Northwest corner of said S½SE¼NW¼ of said Section 12; THENCE South 234 feet to the intersection of the West line of the said S½SE¼NW¼ of said Section 12 with the Easterly right-of-way line of U.S. Highway 30; THENCE South 25°24’ East along the Easterly right-of-way line of U.S. Highway 30 a distance of 2,200 feet; THENCE on a 3°05’ curve to the left along said right-of-way line 650 feet to the PLACE OF BEGINNING. Township 11 South, Range 19 East, Boise Meridian, Twin Falls

Public notices

County, Idaho
Section 12: All that portion of the NW¼SE¼ lying West of the Main Canal of the Twin Falls Canal Company. Township 11 South, Range 19 East, Boise Meridian, Twin Falls County, Idaho Section 12: N½SW¼SE¼ Township 11 South, Range 19 East, Boise Meridian, Twin Falls County, Idaho Section 12: That part of the SW¼SE¼ lying West of U.S. Highway No. 30 Township 11 South, Range 19 East, Boise Meridian, Twin Falls County, Idaho Section 12: All that part of the SE¼SE¼ more particularly described as follows: BEGINNING at the Southwest corner of the SE¼SE¼ of said Section 12; THENCE North along the West boundary line of said SE¼SE¼ a distance of 400 feet, more or less, to the Southwesterly right-of-way line of the Main Canal of the Twin Falls Canal Company; THENCE in a Southeasterly direction along said right of way a distance of 500 feet, more or less, to the South boundary line of said SE¼SE¼; THENCE West along said South boundary line of said SE¼SE¼ a distance of 450 feet, more or less, to the PLACE OF BEGINNING. **EXCEPT** Township 11 South, Range 19 East, Boise Meridian, Twin Falls County, Idaho Section 12: A parcel of land being on the North side of the centerline of Project No. ST-2846(618), Highway Survey, as shown on the plans thereof now on file in the office of the Idaho Transportation Department, Division of Highways, and being a portion of the SE¼SE¼ of said Section 12 described as follows, to-wit: COMMENCING at the South quarter corner of said Section 12; THENCE South 89°50'16" East along the South boundary of the SE¼ of Section 12 for a distance of 1413.13 feet, Station 1060+50.00, 9.78 feet left of said Project centerline and being the TRUE POINT OF BEGINNING; THENCE North 00°16'14" West for a distance of 40.22 feet, Station 1060+50.00, 50.00 feet left of said Project centerline; THENCE North 89°43'46" East parallel with said Project centerline for a distance of 350.00 feet, Station 1064+00.00, 50.00 feet left of said Project centerline; THENCE North 00°16'14" West for a distance of 20.00 feet, Station 1064+00.00, 70.00 feet left of said Project centerline; THENCE North 89°43'46" East parallel with said Project centerline for a distance of 50.00 feet, Station 1064+50.00, 70.00 feet left of said Project centerline; THENCE South 00°16'14" East for a distance of 30.00 feet, Station 1064+50.00, 40.00 feet left of said Project centerline; THENCE North 89°43'46" East parallel with said Project centerline of a distance of 38.74 feet to a point on the centerline of the Twin Falls Main Canal, Station 1064+88.74, 40.00 feet left of said Project centerline; THENCE South 25°52'53" East along said canal centerline for a distance of 9.23 feet, Station 1064+92.73, 31.68 feet left of said Project centerline; THENCE South 15°16'35" East along said canal centerline for a distance of 26.19 feet to a point on the South boundary of the SE¼ of said Section 12, Station 1064+99.51, 6.39 feet left of said Project centerline; THENCE North 89°50'16" West along the South boundary of the SE¼ of Section 12 for a distance of 449.52 feet to the POINT

OF BEGINNING. Highway Reference Station: 1060+50.00 to 1064+99.51 Township 11 South, Range 19 East, Boise Meridian, Twin Falls County, Idaho Section 12: All that part of the S½SW¼SE¼ lying West of the Main Canal of the Twin Falls Canal Company. **SUBJECT TO** an easement reserved for Uhlig Ranches, Inc., an Idaho corporation, for the maintenance and use of that certain drain ditch running along the West side of the canal bordering said premises. Said easement shall be perpetual. **SUBJECT TO** Highway District right of way. **PARCEL NO. 10-8** Township 11 South, Range 19 East, Boise Meridian, Twin Falls County, Idaho Section 12: A part of the SE¼SW¼ described as follows: COMMENCING at the South quarter corner of Section 12; said point lies South 89°26'17" East 2633.17 feet from the Southwest corner of Section 12; THENCE North 00°22'39" East 418.55 feet along the East boundary of SW¼ of Section 12 to a point on the Southwesterly right of way on U.S. Highway 30, Project No. N.R.H. 23-0; THENCE along a curve right on said right of way: Δ -08°07'39"; R -1960.00 feet; A -278.03 feet; C -277.80 feet; T -139.25 feet; LCB -North 44°26'19" West to the REAL POINT OF BEGINNING; THENCE North 89°26'17" West 712.26 feet; THENCE North 01°50'22" East 634.48 feet; THENCE South 89°54'12" East 315.19 feet to the Southwesterly right of way on said Highway; THENCE South 25°07'46" East 224.55 feet along the said right of way; THENCE along a curve left on said right of way: Δ -15°14'43"; R -1960.00 feet; A -521.51 feet; C -519.98 feet; T -262.31 feet LCB -South 32°45'08" East to the REAL POINT OF BEGINNING. **INCLUDING** a 5.00-foot-wide irrigation easement parallel with, adjoining, and West of the entire West boundary of the above-described parcel. **SUBJECT TO** a 5.00-foot-wide irrigation easement parallel with, adjoining, and East of the entire West boundary of the above-described parcel. **AND SUBJECT TO** Highway District right of way. **S** **PARCEL NO. 2** Township 11 South, Range 19 East, Boise Meridian, Twin Falls County, Idaho, Section 5: Lot 2; SW¼NE¼; NW¼SE¼ **SUBJECT TO** Highway District right of way. **PARCEL NO. 3** Township 10 South, Range 19 East, Boise Meridian, Twin Falls County, Idaho Section 32: S½SE¼; SE¼SW¼ **SUBJECT TO** Highway District right of way. Township 11 South, Range 19 East, Boise Meridian, Twin Falls County, Idaho Section 4: S½ **EXCEPT** BEGINNING at a point which is North 1320 feet, more or less, and West 25 feet more or less, from the Southeast corner of said Section 4 and which is the TRUE POINT OF BEGINNING; THENCE West 150 feet; THENCE South 150 feet; THENCE East 150 feet; THENCE North 150 feet. **AND EXCEPT** A tract of land in the E½SE¼ of Section 4, Township 11 South, Range 19 E., B.M., Twin Falls County, Idaho, more particularly described as follows BEGINNING at a point which is North 1320 feet, more or less, and

West 25 feet more or less from the Southeast corner of Section 4, which is the TRUE POINT OF BEGINNING; THENCE West 200 feet; THENCE North 200 feet; THENCE East 200 feet; THENCE South 200 feet to the TRUE POINT OF BEGINNING. Section 5: W½; E½E½; SW¼SE¼; Section 9: NW¼NE¼; S½NE¼; S½NW¼; NE¼NE¼; N½NW¼ **SUBJECT TO** Highway District right of way. **PARCEL NO. 13:** Township 10 South, Range 19 East, Boise Meridian, Twin Falls County, Idaho A tract of land located in Section 31 and the SE¼ of Section 30 more particularly described as follows: BEGINNING at the Southeast corner of said Section 30; THENCE North 00°07'12" West, 2514.82 feet along the easterly boundary of said Section 30 to the center of the Twin Falls Canal Company Lowline Canal; THENCE southwesterly along the center of said Lowline Canal the following courses and distances: South 89°50'15" West 737.93 feet; THENCE South 82°33'45" West 91.54 feet; THENCE South 61°26'44" West 174.52 feet; THENCE South 32°33'54" West 182.96 feet; THENCE South 13°51'56" West 171.19 feet; THENCE South 10°28'29" East 153.40 feet; THENCE South 14°55'00" East 176.57 feet; THENCE South 4°13'56" East 185.91 feet; THENCE South 8°30'19" West 144.80 feet; THENCE South 17°11'43" West 120.80 feet; THENCE South 25°24'21" West 261.98 feet; THENCE South 35°41'20" West 273.84 feet; THENCE South 31°36'44" West 952.15 feet; THENCE South 32°48'48" West 66.80 feet to the southerly boundary of said Section 30; THENCE continuing along the center of said Lowline Canal South 32°48'48" West 114.62 feet; THENCE South 41°06'54" West 135.49 feet; THENCE South 55°30'16" West 82.02 feet; THENCE South 65°47'27" West 263.66 feet; THENCE South 50°45'29" West 159.85 feet; THENCE South 24°37'54" West 173.36 feet; THENCE South 8°31'27" West 202.07 feet; THENCE South 9°41'31" West 352.94 feet; THENCE South 32°19'34" West 116.51 feet; THENCE South 56°47'44" West 219.01 feet; THENCE South 84°10'28" West 191.87 feet; THENCE North 73°52'37" West 275.02 feet; THENCE North 85°11'28" West 182.70 feet; THENCE South 72°51'03" West 180.27 feet; THENCE leaving the center of said Lowline Canal South 21°33'17" East 423.85 feet along a concrete irrigation ditch; THENCE South 53°42'51" East 811.55 feet along said irrigation ditch; THENCE South 27°35'18" East 44.53 feet along said irrigation ditch; THENCE South 00°02'56" East 408.03 feet along said irrigation ditch to the center of a field road; THENCE South 89°59'07" East 1934.14 feet along the center of said field road; THENCE South 39°03'29" East 191.50 feet; THENCE South 48°50'57" East 226.98 feet; THENCE South 89°41'08" East 269.19 feet; THENCE South 81°34'05" East 166.86 feet; THENCE North 88°28'02" East 219.43 feet to a point on the easterly boundary of said Section 31; THENCE North 00°07'12" West 2992.85 feet along the easterly boundary of

said Section 31 to the POINT OF BEGINNING. **SUBJECT TO** the rights of public road which affects 25.00 feet on each side of the section lines of said Sections 30 and 31. **PARCEL NO. 1** Township 10 South, Range 19 East, Boise Meridian, Twin Falls County, Idaho Section 25: SE¼SW¼ and all of Government Lot 7 **EXCEPT:** A strip and tract of land 66 feet in width bounded as follows: BEGINNING at a point on the North line of the SW¼SE¼ of Section 25, Township 10 South, Range 19 East, Boise Meridian, which point is approximately 3,538 feet East and 3,955 feet South of the Section corner common to Sections 23, 24, 25, and 26 in said Township and Range, and running THENCE on a line whose bearing is South 03°27' East for a distance of 528 feet, more or less, to the beginning of a 4° curve to the left; THENCE along said 4° curve for a distance of 542 feet, more or less, to the end of said curve; THENCE on a line whose bearing is South 26°37' East to a point 25 feet North of the South line of the SW¼SE¼ of said Section 25; THENCE West for a distance of 70 feet, more or less; THENCE on a line whose bearing is North 26°37' West for a distance of 222 feet, more or less, to the beginning of a 4° curve to the right; THENCE on said 4° curve to the right for a distance of 570 feet, more or less, to the end of said curve; THENCE on a line whose bearing is North 03°57' West for a distance of 532 feet to the North line of the SW¼SE¼ of said Section 25; THENCE East on said North line a distance of 68 feet, more or less, to the POINT OF BEGINNING. **AND EXCEPT:** Township 10 South, Range 19 East, Boise Meridian, Twin Falls County, Idaho Section 25: A parcel of land located in Government Lot 7 described as follows: BEGINNING at the South quarter corner of Section 25; THENCE North 89°52'26" East 731.7 feet along the Southerly boundary of said Section 25 to the TRUE POINT OF BEGINNING; THENCE North 89°52'26" East 405.00 feet along said Southerly boundary of Section 25 to a point in the centerline of a certain roadway known as “Old U.S. 30;” THENCE North 27°48'34" West 135.51 feet along said centerline; THENCE South 89°52'26" West 342.04 feet; THENCE South 00°07'34" East 120.00 feet to the TRUE POINT OF BEGINNING. **AND ALSO EXCEPT:** Township 10 South, Range 19 East, Boise Meridian, Twin Falls County, Idaho Section 25: A parcel of land in Lot 7 more particularly described as follows: COMMENCING at the South quarter corner of said Section 25; THENCE Easterly along the Southerly boundary of said Section 25 North 89°52'26" East 731.70 feet; THENCE North 00°07'34" West 120.00 feet to the TRUE POINT OF BEGINNING; THENCE North 00°07'34" West 143.00 feet; THENCE Easterly parallel with Southerly boundary of said Section 25 North 89°52'26" East 267.05 feet to the center of Old Highway No. 30; THENCE Southerly along the center of said Old Highway No. 30, 9.90 feet on the arc of a 4°00' curve to the left with a central angle of 00°23'46", a radius of 1432.5 feet, and a chord which bears South 27°36'41" East

9.90 feet to a point of tangency of said highway; THENCE continuing Southeasterly along the center of said highway South 27°48'34" East 151.59 feet; THENCE Westerly parallel with the Southerly boundary of said Section 25 South 89°52'26" West 342.04 feet to the TRUE POINT OF BEGINNING. **AND FURTHER EXCEPT:** Township 10 South, Range 19 East, Boise Meridian, Twin Falls County, Idaho Section 25: A parcel of land located in the SE¼SW¼ more particularly described as follows: BEGINNING at the Southwest corner of said Section 25; THENCE North 89°58'42" East a distance of 1320.78 feet along the Southerly boundary of said Section 25 to the Southwest corner of said SE¼SW¼ and the TRUE POINT OF BEGINNING; THENCE North 0°01'00" West a distance of 349.14 feet along the Westerly boundary of said SE¼SW¼; THENCE North 87°19'06" East a distance of 228.44 feet; THENCE South 0°14'43" West a distance of 212.54 feet; THENCE South 89°46'27" East a distance of 61.86 feet; THENCE South 02°03'37" East a distance of 147.03 feet to a point on the Southerly boundary of said SE¼SW¼; THENCE South 89°58'42" West a distance of 294.32 feet along the Southerly boundary of said SE¼SW¼ to the TRUE POINT OF BEGINNING. **SUBJECT TO** the rights of public roads which affect the Southerly 25 feet and the Westerly 40.00 feet thereof. **PARCEL NO. 2** Township 10 South, Range 19 East, Boise Meridian, Twin Falls County, Idaho Section 25: SE¼NW¼; and the North 15 acres of the NE¼SW¼ more particularly described as follows: BEGINNING at a point 1,320 feet East of the quarter corner of the West line of said Section 25, which point is in the center of the county road and referenced 25 feet East by a 5-inch stone marked with a cross; THENCE East a distance of 1,320 feet to the center of said Section 25, which point is also marked with a 5-inch stone marked with a cross; THENCE South a distance of 495 feet to a point in a large pile of rocks which point is marked by a fence post; THENCE 1,320 feet West to a point in the center of the above-mentioned road which point is referenced 25 feet East by an iron pipe in the top of a stump; THENCE North along the center of said road a distance of 495 feet to the POINT OF BEGINNING. **Y** Township 10 South, Range 19 East, Boise Meridian, Twin Falls County, Idaho Section 36: SW¼NE¼ **SUBJECT TO** Highway District right of way **EXCEPT** right of way of Union Pacific Railroad Section 36: NW¼SE¼ **SUBJECT TO** Highway District right of way. **EXCEPT** that part lying West of the main canal of the Twin Falls Canal Company **AND EXCEPT** right of way of Union Pacific Railroad **AND ALSO EXCEPT** that part lying between the right of way of the Union Pacific Railroad and the main canal of the Twin Falls Canal Company. **EXCEPT:** Township 10 South, Range 19 East, Boise Meridian, Twin Falls County, Idaho Section 36: A parcel of land located in the SW¼NE¼ and the NW¼SE¼ more particularly described as

Public notices

follows: BEGINNING at the Southeast corner of said Section 36; THENCE North 0°17'12" East a distance of 2,641.40 feet along the Easterly boundary of said Section 36 to the Northeast corner of the SE¼ of said Section 36; THENCE South 89°40'33" West a distance of 1,329.26 feet along the Northerly boundary of said SE¼ to the Northeast corner of said NW¼SE¼ and the TRUE POINT OF BEGINNING; THENCE South 0°07'38" West a distance of 42.00 feet along the Easterly boundary of said NW¼SE¼; THENCE South 86°21'24" West a distance of 174.23 feet; THENCE North 0°13'11" West a distance of 630.32 feet; THENCE North 89°40'33" East a distance of 174.18 feet to a point on the Easterly boundary of said SW¼NE¼; THENCE South 0°13'11" East a distance of 578.23 feet along the Easterly boundary of said SW¼NE¼ to the TRUE POINT OF BEGINNING. SUBJECT TO the rights of a public road which affects the Easterly 25.00 feet thereof.

AA Township 11 South, Range 19 East, Boise Meridian, Twin Falls County, Idaho Section 28: Part of the SE¼SE¼, more particularly described as follows: BEGINNING at the Southeast section corner of Section 28, said corner marked by a ½-inch rebar which shall be the POINT OF BEGINNING; THENCE North 89°43'06" West along the South line of the SE¼SE¼ for a distance of 241.95 feet; THENCE North 00°03'57" East for a distance of 23.40 feet to a ½-inch rebar; THENCE North 00°03'57" East for a distance of 393.49 feet to a ½-inch rebar; THENCE South 89°43'06" East for a distance of 223.68 feet to a ½-inch rebar; THENCE South 89°43'06" East for a distance of 18.27 feet to the East line of the SE¼SE¼; THENCE South 00°03'57" West along said line for a distance of 416.89 feet to the POINT OF BEGINNING.

BB **PARCEL NO. 1** Township 10 South, Range 19 East, Boise Meridian, Twin Falls County, Idaho Section 32: NE¼, NE¼SE¼, NW¼SE¼, E½NW¼, and NE¼SW¼

PARCEL NO. 2 Right-of-way easement over and across and upon a strip of land 50 feet in width for the first 50 feet of said easement and 10 feet in width thereafter, centered on the following described line, to-wit: COMMENCING at the Northwest corner of Section 29, Township 10 South, Range 19 East, Boise Meridian, Twin Falls County, Idaho; said point lies North 00°06'59" West 5281.28 feet from the Southwest corner of Section 29; THENCE South 52°44'36" East 3091.69 feet to the REAL POINT OF BEGINNING of the centerline of said easement; THENCE South 17°47'24" East 549.08 feet; THENCE South 00°04'47" West 1851.79 feet; THENCE South 33°54'39" East 1274.74 feet to the REAL ENDING POINT of the centerline of said 10-foot-wide easement; AS CREATED BY Right-of-Way Easement from Gene C. Walker and Eldora Ann Walker, husband and wife, Grantors, conveying an undivided □ interest to Helen Nordling; an undivided □ interest to Esther I. Frahm, Life Tenant, Arlene M. Strango, Ann L. McLaughlin, and James A.

Frahm, Remaindermen; and an undivided □ interest to the Estate of Mabel A. Davis, Grantees, recorded February 9, 1987, as Instrument No. 916894, records of Twin Falls County, Idaho; and re-recorded July 20, 1987, as Instrument No. 925159, records of Twin Falls County, Idaho.

PARCEL NO. 3 Irrigation easement as defined in Easement dated August 25, 1993, given by Gene C. Walker and Eldora Ann Walker, husband and wife, recorded August 25, 1993, as Instrument No. 1993-012362, records of Twin Falls County, Idaho.

DD Township 11 South, Range 19 East, Boise Meridian, Twin Falls County, Idaho Section 12: Part of the SW¼ more particularly described as follows: BEGINNING at the South quarter corner, said corner marked by a 5/8-inch rebar THENCE North 00°08'49" West for a distance of 418.55 feet to the South right of way of State Highway 30; THENCE along said right of way along a non-tangent curve to the right for a distance of 799.70 feet to a ½-inch rebar, said curve having a radius of 1960.00 feet and a central angle of 23°22'38" and a long chord bearing of North 37°19'37" West for a distance of 794.16 feet; THENCE North 25°38'18" West along said right of way for a distance of 185.87 feet to the POINT OF BEGINNING; THENCE South 89°34'08" West for a distance of 427.96 feet; THENCE South 00°03'11" West for a distance of 134.30 feet; THENCE South 89°57'45" East for a distance of 28.97 feet; THENCE South 00°01'32" West for a distance of 21.27 feet; THENCE South 00°01'32" West for a distance of 123.88 feet; THENCE South 89°57'45" East for a distance of 539.81 feet; THENCE along said right of way of State Highway 30 for a distance of 130.26 feet to a ½-inch rebar, said curve having a radius of 1960.00 feet and a delta angle of 03°48'28" and a long chord bearing of North 27°32'32" West for a distance of 130.23 feet; THENCE North 25°38'18" West for a distance of 32.97 feet; THENCE North 25°38'18" West for a distance of 152.90 feet to the POINT OF BEGINNING.

EE Township 11 South, Range 19 East, Boise Meridian, Twin Falls County, Idaho Section 12: That part of the SW¼ lying South and West of the right of way of U.S. Highway 30 in said Section, more particularly described as follows: COMMENCING at the Southeast section corner of Section 12; THENCE North 68°25'55" West 3,433.92 feet; THENCE South 89°42'15" West 11.04 feet to the REAL POINT OF BEGINNING; THENCE continuing South 89°42'15" West 349.96 feet; THENCE North 00°08'53" East 74.99 feet; THENCE North 89°51'15" East 25.00 feet; THENCE North 00°58'55" East 180.00 feet; THENCE North 87°41'50" East 198.01 feet; THENCE South 25°22'03" East 289.04 feet to the REAL POINT OF BEGINNING.

FF Township 11 South, Range 19 East, Boise Meridian, Twin Falls County, Idaho Section 12: That part of the SW¼ more particularly described as follows: COMMENCING at the Southwest corner of Section 12; THENCE 466 feet East along the

South boundary of the SW¼ of Section 12 to the TRUE POINT OF BEGINNING; THENCE 466 feet East along the South boundary of the SW¼ of Section 12; THENCE North parallel to the West boundary of the SW¼ of Section 12, 466 feet; THENCE West 466 feet, more or less, parallel to the South boundary of the SW¼ of Section 12; THENCE South parallel to the West boundary 466 feet to the POINT OF BEGINNING. **SUBJECT TO** a 25.00-foot-wide country roadway easement parallel with and adjoining the South boundary of the above described parcel. **EXCEPT:** Township 11 South, Range 19 East, Boise Meridian, Twin Falls County, Idaho Section 12: A part of the SW¼SW¼ more particularly described as follows: COMMENCING at the Southwest corner of said Section; said point lies North 89°26'17" West 2,633.17 feet from the South quarter corner of Section 12; THENCE South 89°26'17" East 336.38 feet along the South boundary of Section 12 to the REAL POINT OF BEGINNING; THENCE North 00°33'43" East 466.00 feet; THENCE South 89°26'17" East 200.00 feet; THENCE South 00°33'43" West 466.00 feet to the South boundary of Section 12; THENCE North 89°26'17" West 200.00 feet to the REAL POINT OF BEGINNING.

GG Township 11 South, Range 19 East, Boise Meridian, Twin Falls County, Idaho Section 12: A part of the SW¼SW¼ more particularly described as follows: COMMENCING at the Southwest corner of said Section; said point lies North 89°26'17" West 2,633.17 feet from the South quarter corner of Section 12; THENCE South 89°26'17" East 336.38 feet along the South boundary of Section 12 to the REAL POINT OF BEGINNING; THENCE North 00°33'43" East 466.00 feet; THENCE South 89°26'17" East 200.00 feet; THENCE South 00°33'43" West 466.00 feet to the South boundary of Section 12; THENCE North 89°26'17" West 200.00 feet to the REAL POINT OF BEGINNING. **SUBJECT TO** a 25.00-foot-wide country roadway easement parallel with and adjoining the South boundary of the above described parcel.

HH Township 11 South, Range 19 East, Boise Meridian, Twin Falls County, Idaho Section 36: That part of the NW¼NW¼ more particularly described as follows: BEGINNING at the Northwest corner of Section 36 of Township 11 South, Range 19 East of the Boise Meridian, said corner marked by a 5/8-inch rebar which shall be the TRUE POINT OF BEGINNING; THENCE South 89°55'18" East along the Section line for 214.00 feet to a P.K. nail; THENCE South 0°12'35" West for 667.96 feet to a ½-inch rebar; THENCE North 89°02'37" West for 214.02 feet to a ½-inch rebar on Section line; THENCE North 0°12'35" East along the Section line for 664.68 feet to the TRUE POINT OF BEGINNING. **SUBJECT TO** a 25-foot-wide county road right of way along the North and West sides. **AND SUBJECT TO** an easement for an irrigation line along the West boundary of the above described parcel. **ALSO SUBJECT TO** an easement for an irrigation pump facility in the Northwest corner of the above

described parcel.

Cassia County
PARCEL NO. 1 Township 11 South, Range 21 East, Boise Meridian, Cassia County, Idaho Section 11: N½ **EXCEPTING THEREFROM** the following described parcel of land: BEGINNING at the Northeast corner of said Section 11; THENCE South 700 feet along the section line common to Sections 11 and 12, Township 11 South, Range 21 East, Boise Meridian; THENCE Northwesterly to a point on the section line common to Sections 11 and 2 that is 800 feet West of the Northeast corner of Section 11; THENCE East 800 feet to the POINT OF BEGINNING **ALSO EXCEPTING THEREFROM** that portion deeded to the State of Idaho for highway purposes.
PARCEL NO. 2 Township 11 South, Range 21 East, Boise Meridian, Cassia County, Idaho Section 11: Part of the NE¼NE¼ more particularly described as follows: BEGINNING at the Northeast corner of said Section 11; THENCE South 700 feet along the section line common to Sections 11 and 12, Township 11 South, Range 21 East, Boise Meridian; THENCE Northwesterly to a point on the section line common to Sections 11 and 2 that is 800 feet West of the Northeast corner of said Section 11; THENCE East 800 feet to the POINT OF BEGINNING. **EXCEPTING THEREFROM** that portion deeded to the State of Idaho for highway purposes.

PARCEL NO. 3 Township 11 South, Range 21 East, Boise Meridian, Cassia County, Idaho Section 2: All that part of the SE¼SE¼ lying South of State Highway No. 30 (formerly U.S. Highway No. 30)
PARCEL NO. 4 Township 11 South, Range 21 East of the Boise Meridian, Cassia County, Idaho Section 8: SE¼ Section 9: SW¼

PARCEL NO. 5 Township 11 South, Range 21 East of the Boise Meridian, Cassia County, Idaho Section 10: SW¼ Section 18: ALL Section 21: NE¼

PARCEL NO. 6 Township 11 South, Range 21 East of the Boise Meridian, Cassia County, Idaho Section 7: That part of the SE¼ that lies South of U.S. Highway 30 right of way Section 8: That part of the NE¼ and the W½ that lies South of U.S. Highway 30 right of way Section 9: SE¼; NE¼; NW¼ Section 15: W½ Section 16: E½

PARCEL NO. 7 Township 11 South, Range 21 East, Boise Meridian, Cassia County, Idaho Section 11: S½ **EXCEPTING THEREFROM** the following described tracts:
Tract No. 1 BEGINNING at a point that is 1950 feet North of the Southwest corner of the SW¼ of said Section 11; THENCE North 208 feet; THENCE East 208 feet; THENCE South 208 feet; THENCE West 208 feet to the POINT OF BEGINNING.

Tract No. 2 BEGINNING at a point that is 2158 feet North of the Southwest corner of the SW¼ of said Section 11; THENCE East 208 feet to the TRUE POINT OF BEGINNING; THENCE North 53°42'13" East 815 feet to a point on the North boundary of the SW¼; THENCE West along the said North boundary 800 feet, more or less, to the Northwest corner of the SW¼; THENCE South along the Section line 482 feet, more or less, to a point that is

2158 feet North of the Southwest corner of the SW¼; THENCE East 208 feet to the TRUE POINT OF BEGINNING.

PARCEL NO. 8 Township 11 South, Range 21 East, Boise Meridian, Cassia County, Idaho Section 10: NW¼SE¼; and S½SE¼

PARCEL NO. 9 Township 11 South, Range 21 East, Boise Meridian, Cassia County, Idaho Section 10: NE¼SE¼

PARCEL NO. 10 Township 11 South, Range 21 East, Boise Meridian, Cassia County, Idaho Section 11: Part of the NW¼SW¼ more particularly described as follows: BEGINNING at a point that is 1950 feet North of the Southwest corner of the SW¼ of said Section 11; THENCE North 208 feet; THENCE East 208 feet; THENCE South 208 feet; THENCE West 208 feet to the POINT OF BEGINNING. **AND BEGINNING** at a point that is 2158 feet North of the Southwest corner of the SW¼ of said Section 11; THENCE East 208 feet to the TRUE POINT OF BEGINNING; THENCE North 53°42'13" East 815 feet to a point on the North boundary of the SW¼; THENCE West along the said North boundary 800 feet, more or less, to the Northwest corner of the SW¼; THENCE South along the Section line 482 feet, more or less, to a point that is 2158 feet North of the Southwest corner of the SW¼; THENCE East 208 feet to the TRUE POINT OF BEGINNING.

Blaine County
PARCEL NO. 1 Township 2 South, Range 21 East of the Boise Meridian, Blaine County, Idaho Section 3: A parcel of land located in the SE¼NW¼ more particularly described as follows:

COMMENCING at the North quarter corner of said Section 3; THENCE South 00°49'52" East along the East boundary of the NW¼ of Section 3 for a distance of 1,450.00 feet; THENCE North 88°57'30" West for a distance of 37.81 feet to a point on the Westerly right-of-way boundary of Highway U.S. 93 and being the TRUE POINT OF BEGINNING; THENCE South 00°51'00" East along the Westerly right-of-way boundary of Highway U.S. 93 for a distance of 1,204.61 feet to a point on the Southerly boundary of the NW¼ of Section 3 for a distance of 757.75 feet; THENCE North 01°03'00" West for a distance of 1,231.29 feet to a point on the Southerly boundary of Tax Lot 4035; THENCE South 88°57'30" East along the Southerly boundary of Tax Lot 4035 for a distance of 762.47 feet to the TRUE POINT OF BEGINNING. Also known as Tax Lot 7314. **SUBJECT TO** a 25.0-foot-wide road easement for the purpose of ingress and egress; said easement being adjacent to and on the Northerly side of the Southerly boundary of the described parcel. **AND EXCEPTING** the Highway right of way.

Owyhee County
PARCEL NO. 1 Township 9 South, Range 12 East, Boise Meridian, Owyhee County, Idaho Section 18: S½SE¼ Section 19: NE¼NE¼ Section 29: E½NE¼; SE¼NW¼; N½SE¼

PARCEL NO. 2 Township 9 South, Range 11 East, Boise Meridian, Owyhee County, Idaho Section 24: N½NE¼ Township 9

Public notices

South, Range 12 East, Boise Meridian, Owyhee County, Idaho
Section 18: Lots 3, 4; E½SW¼ Section 19: Lot 1; NE¼NW¼ Section 20: S½NW¼; SW¼ Section 29: N½NW¼ **PARCEL NO. 3** Township 9 South, Range 12 East, Boise Meridian, Owyhee County, Idaho
Section 17: SW¼SE¼ Section 20: E½NE¼; NE¼SE¼ Section 21: SE¼NW¼; W½SW¼; NE¼SW¼ **PARCEL NO. 4** Township 9 South, Range 12 East, Boise Meridian, Owyhee County, Idaho
Section 19: NW¼NE¼; S½NE¼; SE¼NW¼; NE¼SW¼; N½SE¼; SE¼SE¼ **PARCEL NO. 5** Township 9 South, Range 12 East, Boise Meridian, Owyhee County, Idaho
Section 19: Lot 2; SW¼SE¼ Section 20: W½E½ Section 29: W½NE¼ **PARCEL NO. 6** Township 9 South, Range 12 East, Boise Meridian, Owyhee County, Idaho
Section 28: W½ **PARCEL NO. 7** Township 9 South, Range 12 East, Boise Meridian, Owyhee County, Idaho
Section 29: SW¼SW¼ Section 30: SE¼SE¼ Section 31: E½NE¼ Section 32: NW¼

EXHIBIT B

All furnishings, fixtures (including trade fixtures), appliances, furniture, pumps, motors, sprinkler systems and mainlines, and all other equipment used for the production of water on the land described in attached Exhibit A (the “Property”), or for the irrigation or drainage thereof, and all potato storage equipment, together with, whether now owned or hereafter acquired, any and all accessions, parts, additions, replacements and substitutions for any of such property, and all proceeds (including insurance proceeds) from the sale or other disposition of any such property, including but not limited to: EQUIPMENT LIST
TRACT I 1 GE 400hp ELECTRIC MOTOR SERIAL #FY243055; 1 WINROATH DEEP WELL TURBINE PUMP SERIAL #9878; 3 7-TOWER VALLEY CENTER PIVOTS; 1 MARATHON ELECTRIC 40hp MOTOR
SERIAL #A1059V-55; 1 CENTRIFUGAL BOOSTER PUMP no serial number; 320 JOINTS 3”X40’ ALUMINUM HANDLINES; VARIOUS VALVES CONNECTORS AND END PLUGS
TRACT II 1 ZIMMATIC 12-TOWER PIVOT SERIAL #P-19842; 1 BALDOR 100hp CENTRIFUGAL PUMP, MOTOR AND PANEL SERIAL #294c; 1 125 hp BOOSTER PUMP, MOTOR AND PANEL SERIAL #YA40575TDS026GNW frame SERIAL #40576; 1 CORNELL 40hp BOOSTER PUMP, MOTOR AND PANEL
SERIAL #10378312.6; 150 JOINTS OF 3” HOOK AND LATCH HANDLINES
All rents, issues, profits, royalties and income arising out of or related to real property in Twin Falls and Cassia Counties, Idaho, whether now or hereafter due, described on Exhibit “A”.
All equipment and fixtures (including trade fixtures), including without limitation all fixed potato equipment and all irrigation equipment (all pumps, motors, sprinkler systems, mainlines and all other irrigation equipment used for the production of water on the land described in the attached Exhibit “A” (the “Property”) or for the irrigation or drainage thereof), whether now owned or hereafter acquired, and whether now existing or hereafter arising, and all accessions, parts, additions, replacement and substitutions for any of such property, and all proceeds (including insurance proceeds) from the sale or other disposition of any of such property.
All rents, issues, profits, royalties and income arising out of or related to real

property in Twin Falls, Cassia, Blaine and Owyhee Counties, Idaho, whether now or hereafter due, described on Exhibit “A.”
Irrigation Equipment
Cummins Farms, Inc.
TRACT I - North Farm
The Home Place: US Electric Motor 25 HP; Serial #341897: Aurora Vertiline Pump; Serial #98-74407
:US Electric Motor 40 HP; Serial #1148918: Aurora Vertiline Pump; no serial number: GE Motor 60 HP; Serial #CHJ315407: Layne Bowler Pump; Serial #44982: Westinghouse Electric 30 HP; Serial #8072281: Pomara Pump; Serial #H7733: GE Motor 50 HP; Serial #KH2435410: Peerless Centrifugal Pump; no serial number: 4 ¾-1/4 mile Center Driven Wheelines
Hawker-Canyon: Baldor Electric Motor 25 HP; Serial #39K061W689: Centrifugal Pump; serial number and make unknown: Baldor Electric Motor 25 HP; Serial #39K061W699: Centrifugal Pump, serial number and make unknown: Baldor Electric Motor 25 HP; Serial #39K061W639: Centrifugal Pump, serial number and make unknown: 8-1/4 mile Center Drive Wheelines of various makes
Moore: GE Motor 300 HP; Serial #EDJ515145: Layne Bowler Pump - no serial number: GE Motor 500 HP; Serial #MJJ1219020: Layne Bowler Pump; Serial #74736: GE Motor 500 HP; Serial #MJJ1219021: Layne Bowler Pump; Serial #78858: Westinghouse Electric Motor 150 HP, Serial #773882UGA: Layne Bowler Pump; Serial #81030A: 3-8 Tower Valley Linear; Serial #10068676; Serial #1006877; Serial #10068665: 2-1/4 mile Center Rise Handlines:
3-Center Move Wheelines
Norris-Walker: US Electric Motor 100 HP; Serial #R-2942-00-171-E: Vertiline Pump; Serial #29718: GE Motor 60 HP; Serial #D35031: Vertiline Pump; Serial #D35031: Westinghouse Electric Motor 150 HP; Serial #66F31731: Goulds Pump; Serial #1E95056: 14-1/4 mile Center Drive Wheelines (various makes): 1-8 Tower Valley Pivot (2004); Serial #10318159:
Link: US Electric Motor 75 HP; Serial #R-2842-02-H-521: Layne Bowles Pump; Serial #99-74507-1: GE Motor 75 HP; Serial #FSJ618355: Vertiline Pump; Serial #99-7450-7-2: 1-7 Tower Valley Pivot; no swing arm; Serial #F0G1012: 5-1/2-1/4 mile Center Rise Handlines:
Fram’s: US Electric Motor 75 HP; Serial #14H78W244: Berkley Pump; Serial #ON98B00202: US Electric Motor 75 HP; Serial #14JU98W45061: Berkley Pump; unable to read serial number: 1-7 Tower Valley Linear; Serial #2335498: 1-8 Tower Valley Linear; Serial #2135097: 1-8 Tower Valley Pivot; Serial #2134997: 1-8 Tower Valley Pivot; Serial #2444297: 1-8 Tower Valley Pivot; Serial #2444097: 1-8 Tower Valley Pivot; Serial #2334898:
1-8 Tower Valley Pivot; Serial #2444697: 1-8 Tower Valley Pivot; Serial #2453596: 1-8 Tower Valley Pivot; Serial #2453496: 2-Handlines each corner
Coiner: 9-7 Tower Linears; Serial numbers as follow; 10068668; 10068672; 10068674; 10068673; 10068671; 10068669; 10068666; 10068670; 10068667: 1 Berkeley Motor; Serial #8UB 326TT DR8957ORL, 75 HP Pump; Serial #2C0191: 1 Berkeley Motor; Serial #8UB 404TT 038629AK, 100HP Pump; Serial #2C01D: 1 Berkeley Motor; Serial #8UB 326TT DR8957DR, 75 HP Pump; Serial #2C01M: 1 Berkeley Motor; Serial #F0601070042-004R, 40 HP Pump US; Serial 2K02D: 1 Berkeley Motor; Serial #F061070042-004R, 40 HP Pump US; Serial 2K02B: 1 Berkeley Motor; Serial #F0841070836-006R; 40 HP Pump; Serial #2K02B
Savage Desert: Baldor Motor 100 HP;

— Continued on next page

EXHIBIT B Cummins Farms Inc Water Rights Exhibit Tract I – North Farm					
	Number	cfs	Priority Date	Acres	Stage
The Home Place Id Dept Water Resources	45-2282	0.70	11/19/48	100.00	License
	45-2588	2.24	08/11/59	217.00	License
	45-2599	1.39	01/18/60	217.00	Decreed
	45-10172	0.08	12/31/59	Domestic Decreed	
Twin Falls Canal Co	31338			65.29	Shares
Hawker - Canyon					
Twin Falls Canal Co	36083*			183.30	Shares
*Cert 33549 for 121 share and 35607 for 62.30 shares combined to one certificate.					
Moore					
Twin Falls Canal Co	35412			125.00	Shares
	35413			122.00	Shares
	35414			32.00	Shares
	35415			67.00	Shares
Norris					
Twin Falls Canal Co	35725			132.66	Shares
Walker					
Twin Falls Canal Co	35363			223.77	Shares
	35364			57.34	Shares
Link					
Twin Falls Canal Co	34604			207.00	Shares
Coiner					
Twin Falls Canal Co	35683			13.30	Shares
	35684			20.00	Shares
	35685			20.00	Shares
	35686			1.00	Shares
	35687			31.24	Shares
	35688			23.00	Shares
	35689			13.02	Shares
	35690			23.52	Shares
	35691			60.00	Shares
	35692			35.00	Shares
	35693			37.00	Shares
	35694			15.00	Shares
	35695			2.50	Shares
	35696			37.21	Shares
	35697			80.00	Shares
	36158			135.61	Shares
Fram					
Twin Falls Canal Co	35304			1.92	Shares
	35416			63.01	Shares
	35550			28.00	Shares
Adams - Desert					
Twin Falls Canal Co	34014			11.50	Shares
	34017			17.63	Shares
	34167			8.27	Shares
	34176			23.88	Shares
	34819			17.00	Shares
Additional Water Rights Available for Tract I					
Artesian Irrigation, Inc.	46			2866.00	Shares
			equivalent to:	533.00	Acre Feet
within the Artesian Irrigation, Inc. District delivery through Murtaugh Lake					

Cummins Farms, Inc Water Rights Exhibit Tract III – Conrad Farm							
Right Number	Priority Date	Basis	Use	Diversion Rate	Volume	Total Acres	Notes
45-2583	19-Jun-59	License	Irrigation	1.82 cfs	888 afa	245.0	
45-2674A	11-Sep-62	License	Irrigation	4.22 cfs	1148 afa	287.0	
45-2689	9-Nov-62	License	Irrigation	5.82 cfs	1976 afa	494.0	
45-7020	6-Apr-67	License	Irrigation	3.76 cfs	752 afa	188.0	
45-7034	3-Mar-69	License	Irrigation	2.94 cfs	580 afa	148.0	
45-7035	28-Feb-69	License	Irrigation	5.79 cfs	1280 afa	320.0	
45-7110	18-Sep-72	License	Irrigation S	4.00 cfs	1248 afa	310.0	
45-7238	2-May-75	License	Irrigation	6.40 cfs	2536 afa	634.0	
45-7374	11-Apr-79	License	Irrigation	3.10 cfs	620 afa	155.0	
45-10268	1-Sep-55	Decreed	S D	.26 cfs			Quantity not to exceed 13,000 gal per day; 25 cattle and horses
45-10269	1-Sep-60	Decreed	S D	.04 cfs			Quantity not to exceed 13,000 gal per day; 100 cattle
45-10270	12-Nov-66	Decreed	S D	.24 cfs			Quantity not to exceed 13,000 gal per day; 100 cattle, 1000 sheep
45-10271	12-Nov-66	Decreed	S D	.24 cfs			Quantity not to exceed 13,000 gal per day; 100 cattle, 1000 sheep
45-10272	12-Nov-66	Decreed	S D	.24 cfs			Quantity not to exceed 13,000 gal per day; 100 cattle, 1000 sheep
45-10273	12-Nov-66	Decreed	S D	.24 cfs			Quantity not to exceed 13,000 gal per day; 100 cattle, 1000 sheep
45-10274	15-Mar-62	Beneficial Use	Irrigation	.07 cfs	34 afa	494.0	
Palisades Water Users, Inc. Cassia Co Holdings							
	658			1000			Each right equivalent to an acre foot of storage in reservoir
	660			140			Cost of ea share on average \$0.45 per share. Water is delivered by Milner Low Lift. These certificates are personal property.
S - Stock D - Domestic C - Commercial							

Cummins Farms, Inc Water Rights Exhibit Tract IV – Blue Ridge						
Right Number	Priority Date	Basis	Use	Diversion Rate	Volume	Total Acres
51-7038	20-Jun-69	Active	Irrigation	4.28 cfs		320.0
51-7030	30-Sep-68	Active	Irrigation	6.40 cfs		320.0
51-7018	5-Apr-68	Active	Irrigation	3.00 cfs		210.0
51-7014	19-Feb-68	Decreed	Irrigation	3.99 cfs	1280 afa	320.0
51-2189	24-Dec-63	Decreed	Irrigation	4.14 cfs	828 afa	207.0
51-2188	11-Jan-64	Decreed	Irrigation	1.62 cfs	786 afa	278.0
51-2186	9-Dec-63	Decreed	Irrigation	5.40 cfs	1080 afa	270.0
51-2185	9-Dec-63	Decreed	Irrigation	5.80 cfs	1160 afa	290.0
51-10292	31-Dec-71	Decreed	Domestic	0.04 cfs		
51-10291	20-May-68	Decreed	Domestic	0.04 cfs		
51-10290	20-May-71	Decreed	Domestic	0.04 cfs		
51-10201	1-Mar-77	Active	Domestic	0.04 cfs		
51-10137	30-Sep-75	Active	Domestic	0.04 cfs		
51-10046	30-Jun-85	Decreed	Irrigation	0.355 cfs		278.0

Cummins Farms, Inc Water Rights Exhibit Tract VI – 3rd Gen Beck Farm						
Right Number	Priority Date	Basis	Use	Diversion Rate	Volume	Total Acres
45-2576	10-Apr-59	License	Irrigation	5.94 cfs	1188 afa	297.0
45-7363	8-Jan-79	License	Irrigation	1.66 cfs	556 afa	139.0

Cummins Farms, Inc Water Rights Exhibit Tract VII – 3rd Gen Giles Farm				
Number	cfs	Priority Date	Acres	Stage
Twin Falls Canal Co	34875		359.95	Shares

Public notices

Serial #S652695: Pump unknown make; Serial #01-9713: Motor unknown make 75 HP; Serial #70016658: Aurora Pump; Serial #77-44: 3-8 Tower Valley Pivots, Serial #64-P1-57024; 63-P2-62-870; 62-P3-68199: 1 Pivot; Serial #85436

Adams – Desert: 1-8 Tower Valley Pivot; Serial #73121: 1/4 mile Handlines on corner

Sprague: GE Motor 100 HP Serial #CMJ331103: Turbine pump of unknown make and serial number: US Electric Motor 20 HP Serial #1054179: Aura Vertiline turbine pump; serial number unknown: 118 Tower Valley Pivot; Serial #52245: 2-1/4 mile Center Drive Wheellines of various makes

TRACT II - South Farm Goodman: Marathon Motor Electric 60 HP; Serial #42727870-5/12-06: Paco Centrifugal Pump; Serial #99B00365-A: 1-8 Tower Valley Pivot, Unable to obtain serial # due to crops; will get after harvest: 3-1/4 mile Center Rise Handlines

Adams: GE Motor 75 HP; Serial #OJJ423331: Aurora Vertiline Pump; no serial number: US Electric Motor 100HP; Serial #956758: Fairbanks-Morse Pump; Serial #PN8401: GE Motor 150 HP; Serial #FCJ623139: Layne Bowler Pump; Serial #1520: Deming Electric Motor; Serial #19297: Fairbanks-Morse Pump; Serial #P29801: GE Motor 50 HP; Serial #FNJ608499: Mid-South Pump; Serial #5913: 1-8 Tower Zimmatic Pivot; Serial #P49373: 2-8 Tower Valley Pivots; Serial #(S)073304 & (N)073306: 4-1/4 mile Center Rise Handlines

O Anderson: W3-US Electric Motor 75 HP; Serial #1015545: Fairbanks Morris Pump; Serial #P18488: Baldor Electric Motor 25 HP; Serial #JPM2516T: Paco Pump; serial number unknown: 1-1/4 mile Centre Rise Handlines

Breeding: GE Motor 150 HP; Serial #OLJ126020: 1-8 Tower Lockwood Pivot; Serial #B1347: 1-1/2-1/4 mile Center Rise Handlines

Carrier: US Electric Motor 125 HP; Serial #997055: Layne Bowler Pump; serial number unknown: Baldor Electric Motor 50 HP; Serial #0000210: Paco Centrifugal Pump; Serial #BOR00304H: GE Motor 125 HP; Serial #LKJ1113107: Layne Bowler Pump; serial number unknown: Motor 50 HP (maker unknown); Serial #8134-A-A00: Cornell Centrifugal Pump; serial number unknown: 1-8 Tower Valley Pivot; Serial #89-P3-63620: 1-8 Tower Valley Pivot; Serial #84-P2-IB1109: 3-1/4 mile Center Rise Handlines

Claiborn & Sumner: US Electric Motor 5 HP; Serial #R-8378-04-906: Aurora Vertiline Pump; serial number unknown: LS Electric Motor 40HP; Serial #2410502: Aurora Vertiline Pump; Serial #37570290: US Electric Motor 40HP; Serial #HR-1031735: Fairbanks-Morse pump; serial number unknown: Demming Electric Motor unknown HP or serial number: Peerless Pump; Serial #2615803: Baldor Electric Motor 60 HP; Serial #02998: Paco Centrifugal Pump; serial number unknown: GE Motor 15 HP; Serial #ND6293: Fairbanks-Morse Morse pump, Serial #2F8546-1: US Electric Motor 40 HP; Serial #11800407: Fairbanks-Morse Morse Pump; Serial #PM9045: Marathon electric motor 60 HP; Serial #7404: Centrifugal Pump unknown make or serial number: US Electric Motor 40HP; Serial # 3704482: Layne Bowler Pump;

Serial #4414: Westinghouse Electric Motor 60 HP; Serial #9513T02H: Pump of an unknown make or serial number: GE Motor 125 HP; Serial #BHIJ204102: Orteningto Pump; Serial #12-401QB013: Baldor Electric Motor 60 HP; Serial #14529W44661: Cornell Centrifugal Pump; Serial #79029: GE Motor 100HP; Serial #DWJ302115: Aurora Vertiline Pump; Serial #770: US Electric Motor 75 HP; Serial #945689: Fairbanks-Morse Morse Pump; serial number unknown: GE Motor 75 HP; Serial #HTJ805319: Layne Bowler Pump; serial number unknown: 25 HP motor make and serial number unknown: Paco Pump; Serial #G10X0P20108: GE Motor 125 HP; Serial #MMJ1201975: Layne Bowler Pump; Serial #17080: Baldor Electric Motor 60 HP; Serial #99B00365-B: Paco Pump; Serial #60-25013705200TZ512: 3-8 Tower Valley Pivots: 1-8 Tower Valley Pivot; Serial #85795: 1-8 Tower Zimmatic Pivot; Serial #279676: 15 -1/4 mile Center Drive Wheellines: 6-1/4 mile Center Rise Handlines:

Hawker: US Electric Motor 125 HP; Serial #997055: Layne Bowler Pump; serial number unknown: Marathon Electric Motor 50 HP; serial number unknown: Cornell Pump; serial number unknown: 1-7 Tower Pivot with Corner Catcher; Serial #80-P1-FB1579: 1-1/4 mile Center Rise Handline

Myers: US Electric Motor 60 HP; Serial #3125237R008R-3: Layne and Bowler Pump; Serial #16148: US electric Motor 40HP; Serial #3648363: Goulds Pump; Serial #58895: 1-8 Tower Zimmatic Center Pivot; Serial #88-P2-L47395: 1-1/4 mile Center Rise Handlines:

Nail: Century Electric Motor 20 HP; Serial #6-360538-02: Centrifugal Pump; make and serial number unknown: Century Electric Motor 30 HP Serial #6-355297-01: Cornell Pump; Serial #53836: Century Electric Motor 30 HP; Serial #6-355297-02: Cornell Pump; Serial #53835: GE Motor 100HP; Serial #XHJ96949181: Layne Bowler Pump; Serial #17096: Century Electric Motor 30 HP; Serial #6-355297-02: Cornell Pump; Serial #55837: US Electric Motor 200 HP; Serial #1021730: Layne Bowler Pump; Serial #269-76: 1-8 Tower Zimmatic Pivot; Serial #80-P3-L77580: 1-8 Tower Zimmatic Pivot; Serial #100-P1-L77581: 1-8 Tower Zimmatic Pivot; Serial #100-P2-L74898: 3-1/2-1/4 mile Center Rise Handlines:

Nebeker: GE Motor 150 HP; Serial #YHJ6949196: Layne Bowler Pump; Serial #15890: Lincoln Electric Motor 50 HP; Serial #1352241: Cornell Centrifugal Pump; Serial #64206: US Electric Motor 100 HP; Serial #1065226: Layne Bowler Pump; serial number unknown: GE Motor 75 HP; Serial #LJS14035: Cornell Centrifugal Pump; Serial #15747: 2-8 Tower Valley Pivots; Serial #84-P1-HB1347 & 97-P2-IB1110: 2-1/4 mile Handlines:

L. Stanger: GE Motor 100HP; Serial #NRJ114012: Layne Bowler Pump; Serial #1775: Baldor electric Motor; plate with serial number missing: Centrifugal Pump; make and serial number unknown: 1-8 Tower Zimmatic Pivot; Serial #79546: 8-1/4 mile Center Driven Wheellines:

Stanger: US Electric Motor 100HP; Serial number unknown: Fairbanks-Morse-Morse Pump; Serial #PH41: Baldor Electric Motor 30 HP; Serial #6930: Cornell Pump; Serial #S345: US

Motor Electric 100HP; Serial #956536: Peerless pump; serial number unknown: Marathon Electric Motor 30 HP; Serial #A15044A55: Cornell Pump; Serial #64199: GE Motor 125 HP; Serial #SMJ510003: Layne Bowler Pump; serial number unknown: Baldor Electric Motor 30 HP; Serial #4952-1494: Cornell Pump; Serial #391513: 3-8 Tower Valley Pivots: Serial #97-P1; 148326:80-P2; 800502; 89-P3; 073305: 3-1/4 mile Center Rise Handlines:

VanLueven: GE Motor 200 HP; serial number unknown: Aurora Vertiline Pump; serial number unknown: Marathon Booster Motor 60 HP; 30364TTD: Paco Centrifugal Pump; serial number unknown: US Electric Motor 125 HP; Serial #1032613: Fairbanks-Morse Pump; serial number unknown: GE Booster Motor 50 HP; Serial #SK326JL2262: Cornell Centrifugal Pump; serial number unknown: US Electric Motor 150 HP; Serial #A445UMP or 1405773: Deming Pump; Serial #12952: GE Booster Motor 50 HP; serial number unknown: Cornell Centrifugal Pump; Serial #35880: US Electric Motor 125 HP; Serial #326TCZ96080: Pump with no make or serial number available: Baldor Booster Motor 50 HP; serial #3426024W115: Paco Centrifugal Pump; serial number unknown: 1-8 Tower Valley Model 8000 Pivot; Serial #85817: 1-8 Tower Valley Model 8000 Pivot; Serial #85793: 1-8 Tower Valley Model 8000 Pivot; Serial #85816: 1-9 Tower Valley Wade Rain Retrofit Pivot; EN377:

Savage - Allen’s: GE Motor 125 HP; Serial #YDG484013: Vertiline Pump; Serial #9072045: US Electrical Motors 125 HP; Serial #HC1023160: Vertiline Pump; serial number unknown: W4-US Electric Motor 125 HP; Serial #1239980: Fairbanks-Morse Pump; Serial #PH7741: W5-US Electric Motor 125 HP; Serial #1000218: Layne Bowler Pump; no serial number: W2-US Electrical Motors 200 HP; Serial #C1005076: Pump unknown make, Serial #00 74340: W1-GE Motor 100HP; Serial #ND013022: Peerless Pump; Serial #173371: US Electrical Motors 60 HP; Serial #934845: Fairbanks-Morse Pump; Serial #PM315: GE Motor 60 HP; Serial #RD155050: Vertiline Pump; serial number unknown: 2 Valley Linear Pivot; Serial #62052 and unknown: 2-8 Tower Valley Pivots; Serial #53293 and 62001: 3-1/4 mile Center Driven Wheellines

Savage Blue Bldg.: GE Motor 150 HP; Serial #MWJ1221109: Pump unknown make, Serial #D14634: GE Motor 200 HP; Serial #CSJ312127: Aurora Pump; serial number unknown: 2 Valley Linear Pivots; Serial #70015 and unknown: 3-1/4 mile Center Driven Wheellines

Funk Farm: W8-US Electric Motor 150 HP; Serial #1220589: Deep Well Turbine Booster: Unknown Booster Motor 75 HP; Serial #R-9426-03-204M: Centrifugal Booster Pump; W7-GE Motor 125 HP; Serial #DNJ420111: Deming Deep Well Turbine Booster: 1-8 Tower Valley Center Pivot; Serial #53303: 1-8 Tower Valley Center Pivot; Serial #53292:

TRACT III - Conrad Farms: S1-GE Motor 100 HP; Serial #ANJ112434: Layne Bowler Pump; serial number unknown: S2-GE Motor 100 HP; Serial #LJJ1107152: Layne Bowler

Pump; Serial #75272: B3-Motor 20 HP; make and serial number unknown: Pump; make and serial number unknown: B4-Marathon electric Motor 60 HP; Serial #96583-219-3: Aurora Pump; Serial #7J-14429-2: B5-Marathon Electric Motor 60 HP; Serial #FL90897: Aurora Pump; Serial #7J-14429-3: S6-GE Motor 200 HP; Serial #NYJ117130: Pump; unknown make; Serial #9673945:

S7-US Electric Motor 75 HP; Serial #4066339-5: Layne Bowler Pump; Serial #D32759: S8-GE Motor 100 HP Serial #LBJ1130129: Aurora Pump; serial number unknown: B9-US Electric Motor 200 HP; Serial #CD120801-J93: Aurora Pump; Serial #7416507: W10-GE Motor 500 HP; Serial #DLJ416021: Aurora Pump; Serial #V76-72983: W11-US Electric Motor 100 HP; Serial #678585: Cornell Pump; serial number unknown: W12-US Electric Motor 60 HP; Serial #1259126: Layne Bowler Pump; Serial #D12663: W13-US Electric Motor 150 HP Serial #1402684: Layne Bowler Pump; Serial #D01006: W14-US Electric Motor 150 HP; serial number unknown: Peerless Pump; Serial #193223: B15-Marathon electric Motor 125 HP; Serial #1905420-613-02: Cornell Pump; Serial #6RB-125-4: W16-GE Motor 450 HP; Serial #EHJ503017: Layne Bowler Pump; Serial #181640: B17-The Louis Allis Co Electric Motor 75 HP; Serial #Z587980: Layne Bowler Pump; Serial #D40022: B18-US Electric Motor 150 HP; Serial #CZ684-01-171-J: Layne Bowler Pump; Serial #D35725: B19-Electric Motor 100 HP; make unknown; Serial #960827: Aurora Pump; Serial #77-06580-2: W23-GE Motor 350 HP; serial #UNJ713002: Layne Bowler Pump; Serial #D04194: B24-Marathon Electric Motor 100 HP; Serial #4Z536950-3120-04: Paco Pump; Serial #8-60157-650001: Linear Valley 1389’ Model 800H; Serial #81467: Linear Valley 1389’ Model 800H; Serial #81505: 6-Valley Pivots Models 8000; Serial #238839, 7366480, 747970, 81691, 244339, and 238849: 1-7 Tower Valley Pivot, Unable to obtain serial number due to crops, will get after harvest: 2-8 Tower Valley Pivots, Unable to obtain serial number due to crops, will get after harvest: 1-9 Tower Valley Pivot, Unable to obtain serial number due to crops, will get after harvest: 2-10 Tower Lockwood Pivots; Retro fit with Valley Boxes, Unable to obtain serial number due to crops, will get after harvest: 1-11 Tower Valley Pivot, Unable to obtain serial number due to crops, will get after harvest 16-1/4 mile Wheel lines Center Drive; Various Makes 12-1/4 mile Center Rise Handlines

TRACT IV - Blue Ridge: W-GE Motor 450 HP 1,770 rpm; Serial #AKJ123017: Aurora turbine pump; Serial #U74-00266: B-Marathon Motor 75 HP 1,770 rpm; no serial number available: American Marsh centrifugal pump; Serial #125643: W-GE Motor 400 HP 1,775 rpm; Serial #EKJ508021: Aurora turbine pump; Serial #37570237: B-Baldor Motor 30 HP 1,789 rpm; Serial #196C-734: Cornell centrifugal pump no serial number available: Toshiba variable frequency drive and central air conditioning unit: W-US Electric Motor 200 HP 1,800 rpm; Serial #1150500: Layne Bowler turbine pump; Serial #TF-18-1099: W-US Electric Motor 250 HP

1,800 rpm; Serial #J141397: Layne and Bowler turbine pump; Serial #D19438: W-US Electric Motor 300 HP 1,800 rpm; Serial #HC1029030: Layne and Bowler turbine pump; Serial #4459: W-GE Motor 200 HP 1,770 rpm; Serial #ATJ121116: Worthington turbine pump; Serial #VTP52215: W-US Electric Motor 200 HP 1,775 rpm; Serial #C1006583: Aurora turbine pump; Serial #3X170185: 14-8 Tower Valley Pivots: 1-9 Tower Valley Pivot: 1-7 Tower Valley Pivot: 4-3 Tower Valley Pivot: 1-5 Tower Valley Pivot, Unable to obtain serial number due to crops, will get after harvest: Approximately 1 1/2 - 1/4 mile in Handlines: Several miles of buried Mainline ranging in size from 6” to 15”

TRACT V – Picabo/Carey: Irrigation equipment is not associated with these parcels.

TRACT VI – 3rd Gen Beck Farm Equipment: GE Motor 400 HP; Serial #FY243055: Winroath Deep Well Turbine Pump; Serial #9878: Marathon Electric Motor 40 HP; Serial #A1059V-55: Centrifugal Booster Pump; serial number unknown: 3-7 Tower Valley Center Pivots, Unable to obtain serial number as it was unreadable: 320 Joints 3’X40’ Aluminum Handlines with various valves connectors and end plugs

TRACT VII – 3rd Gen – Giles: Baldor Motor 100 HP: Centrifugal Pump Serial #294-C: 125 Booster Pump Motor; Serial #YA40575TDS7026GNW: Cornell Booster Pump 40 HP; Serial #103783126: 1-12 Towers Zimmatic Pivot; Serial #P-19842: 150 Joints of 3” Hook and Latch Handlines: 1,451-3/4; 1/4 mile Solid Set irrigation lines are used on the farms.

Together with all value openets, end plugs, risers, stems, sprinkler birds, wiring switch panels, shafting, hoses, tubing, bowls, suction pipe, cones, reducers, above and below ground pipe, etc., pertaining to the above listed irrigation equipment.

Potato Cellar Equipment

Specific buildings identified on the Building Supplement as Buildings 4, 5, 6, 7, 8, 9, 21, 34, 46, 47, 54, 55, 56, 57, 58, and 59.

All Plenum pipe, control panels, fans, cooling units and refrigeration units, pertaining and appurtenant and adequate for all potato storage facilities attached to the secured property, and the replacements thereof.

11/22,29;12/6/06

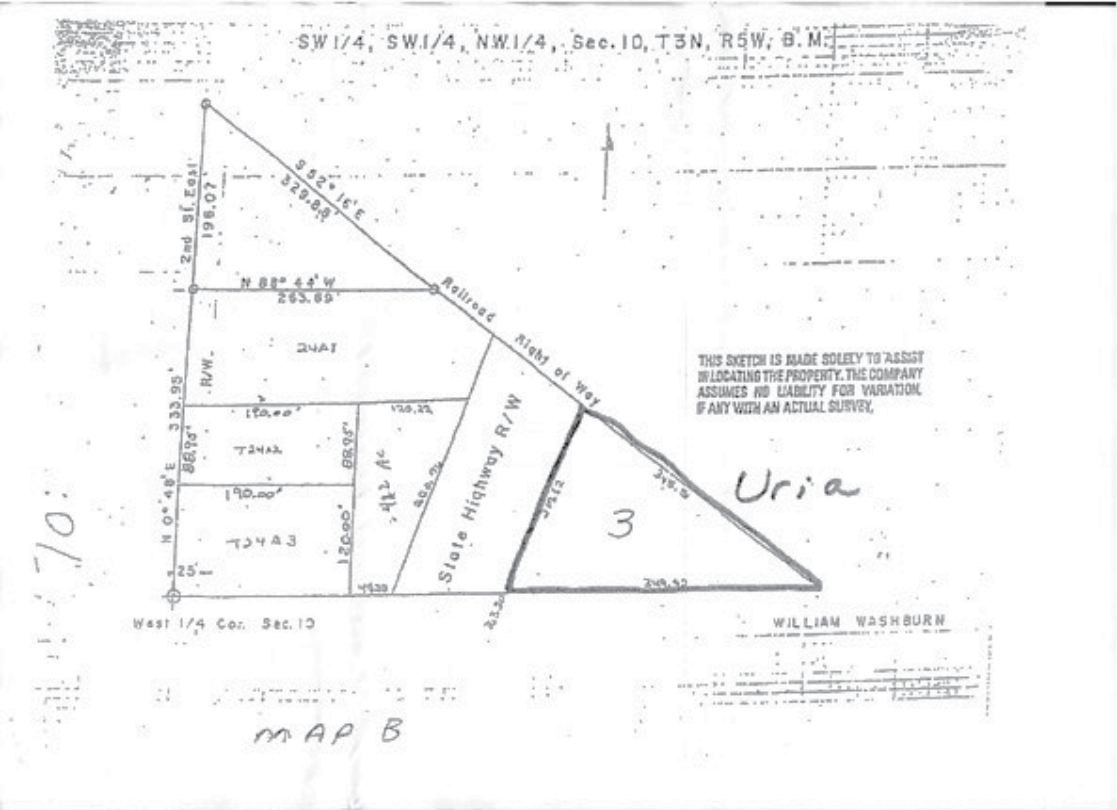
NOTICE OF EQUALIZATION

NOTICE IS HEREBY GIVEN, That the Board of Directors of the Gem Irrigation District will meet at their office at 1:15 p.m. on Tuesday, December 12, 2006 to sit as a Board of Equalization for the purpose of reviewing and correcting its assessments and apportionment of taxes for defraying the expenses of the District for the year 2007. Any compliant concerning the assessments or any changes desired must be entered with the secretary of the District before the above date to receive proper consideration from the Board.

The 2007 assessment may be seen at the Gem Irrigation District office in Homedale, Idaho.

Connie Chadez, Secretary
12/6/06

Public notices



CITY OF HOMEDALE, IDAHO ORDINANCE # 367

AN ORDINANCE DETERMING THAT CERTAIN LAND LIES CONTIGUOUS OR ADJACENT TO THE CITY LIMITS OF THE CITY OF HOMEDALE, COUNTY OF OWYHEE, STATE OF IDAHO; THAT SAID LAND, AT THE REQUEST OF OWNERS OF RECORD, BE ANNEXED TO THE CITY OF HOMEDALE, IDAHO, AND DECLARING SAID LAND BY PROPER LEGAL DESCRIPTION AS DESCRIBED BELOW TO BE A PART OF THE CITY OF HOMEDALE, OWYHEE COUNTY, IDAHO; REPEALING ALL ORDINANCES, RESOLUTIONS, ORDERS OR PARTS THEREOF IN CONFLICT HEREWITH; AND DIRECTING THE CITY CLERK TO ADD SAID PROPERTY TO THE OFFICIAL MAPS OF THE CITY OF HOMEDALE, IDAHO; AND TO FILE A CERTIFIED COPY OF THE ORDINANCE AND MAP OF THE AREA TO BEANNEXED WITH OWYHEE COUNTY, STATE OF IDAHO, AND THE STATE OF IDAHO, PURSUANT TO IDAHO CODE, SECTION 63-2215.

BE IT ORDAINED, BY THE MAYOR AND COUNCIL OF THE CITY OF HOMEDALE, COUNTY OF OWYHEE, STATE OF IDAHO:

Section 1: That the following described real property is adjacent to the City of Homedale, Idaho and the same is hereby annexed, pursuant to the request of owners of said property set forth in Exhibit "A" attached hereto and by this reference made a part hereof, and made a part of the City of Homedale, Idaho. That said real property is more particularly described as follows:

1. Tax 62 consisting of 19.767 acres, located on the south of Industrial Road and on the east side of the Highway 95.

Owner: Ben C. Badiola and Lori L. Badiola, husband and wife (See No. 1 on Map A) Described as follows:

This Parcel is a portion of the SW ¼ NW ¼ and the SE ¼ NW ¼ of Section 10, Township 3 North Range 5 West, of the Boise Meridian, and is more particularly described as follows:

COMMENCING at the southwest corner of said SW ¼ NW ¼,



Thence South 88° 43' 50" East (of record South 88° 42' 54" East) along the south boundary of said SW ¼ NW ¼ a distance of 363.43 to a point on the easterly right-of-way of U.S. Highway 95 (centerline station 127+81.07), as described in Instrument No. 229768, Federal Aid Project No. F-3311 (11) as shown on the plans thereof on file in the Office of the Idaho Transportation Department,

Thence along a curve to the right having a central angle of 03° 14' 54" a radius of 5669.78 feet, an arc length of 321.43 feet and a long chord which bears North 21° 01' 01" East a distance of 321.39 feet (centerline station 131+17.53) to the TRUE POINT OF BEGINNING,

Thence traversing said easterly right-of-way as follows:

Along a curve to the right having a central angle of 05° 32' 47" a radius of 5669.78 feet, an arc length of 548.84 feet and a long chord which bears North 25° 24' 54" East a distance of 548.63 feet (centerline station 136+60.56),

North 28° 11' 17" east (of record North 28° 12' 13" East) a distance of 169.44 feet (centerline station 138+30.00),

North 31° 02' 19" East (of record North 31° 30' 15" East) a distance of 382.24 feet (centerline station 142+11.77),

North 28° 11' 17" East (of record North 28° 12' 13" East) a distance of 27.36 to a point on the centerline of Industrial Road as it now exists (centerline station 142+39.13) said point also being the southeasterly corner of a parcel described in Instrument No. 229768;

Thence traversing said centerline as follows:

South 52° 41' 13" East (of record South 52° 40' 18" East) along the south boundary of said Instrument No. 229768 and Instrument No. 230526 a distance of 911.64 feet;

Along a curve to the right having a central angle of 05° 31' 35" a radius of 1107.00 feet an arc length of 106.77 feet and a long chord which bears south 49° 55' 25" East (of record South 49° 54' 30" East) a distance of

106.73 feet;

South 47° 09' 40" East (of record South 47° 08' 43" East) a distance of 24.77 feet to the southeasterly corner of said Instrument No. 230526;

Thence leaving said centerline and bearing South 56° 27' 50" West (of record South 56° 26' 41" East) along the centerline of Gem irrigation District Drain Ditch No. 1 a distance of 1171.77 feet to a point on the northeasterly right-of-way of the Oregon Short Line Railroad right-of-way;

Thence North 52° 16' 47" West (of record North 52° 16' 42" west) along said right-of-way a distance of 472.41 feet to the TRUE POINT OF BEGINNING.

This Parcel contains 19.77 acres, more or less, and is subject to all easements and rights-of-ways of record or implied.

2. Tax 1B consisting of 9.36 acres, located on the west side of Highway 95 and south of Industrial Road

Owner: Amalgamated Sugar Company (See No. 2 on Map A) Described As Follows:

That part of the SW ¼ NW ¼, Section 10, T3N, R5W of the Boise Meridian lying West of the Proposed Highway 95 and East of the O.S.L.R.R.O.S.

This parcel contains approximately 10.92 acres, more or less.

3. Owner: Ricardo Uria and Terri K. Uria, husband and wife, located on the east side of Highway 95 and south of the railroad right-of-way, (See No. 3 on Map B), Described As Follows:

A portion of and situated in the Southwest Quarter of the Southwest Quarter of the Northwest Quarter of Section 10, Township 3 North, Range 5 West, Boise Meridian, Owyhee County, Idaho, more particularly described as follows:

COMMENCING at the West Quarter Corner of the above-described Section 10, Township 3 North Range 5 West: thence

South 88° 44' East 363.30 feet to a point which is the REAL POINT OF BEGINNING; thence continue

South 88° 44' East along the south Section line 349.52 feet to a point on the Railroad right-of-way; thence

North 52° 16' West along the Railroad right-of-way 345.51 feet to a point; thence along an arc of a 5,669.58 foot radius curve to the right 217.53 feet and the chord of this curve bears South 20° 30' 24" West 217.52 feet to a point, which is the REAL POINT OF BEGINNING.

4. Homedale Middle School, located on Johnstone Road (Shown on Map A)

Described As Follows:

PARCEL NO.1
The S ½ NE ¼, section 8, Township 3 North, Range 5 West, B. M., Owyhee County, Idaho EXCEPTING there from that portion thereof particularly described as follows:

BEGINNING at the Southeast corner of SW ¼ NE ¼ which point is also the Southwest corner of SE ¼ NE ¼;

Thence South 89° 11' 45" West along the South boundary of SW ¼ NE ¼, a distance of 247.22 feet;

Thence North 3° 28' 20" West, a distance of 58.33 feet;

Thence North 63° 32' 45" East, a distance of 111.23 feet;

Thence North 87° 08' 30" East, a distance of 155.04 feet;

Thence South 1° 48' 45" East, a distance of 111.99 feet to a point

on the South boundary of said SE ¼ NE ¼;

Thence South 89° 13' 15" West along the South boundary of SE ¼ NE ¼, a distance of 7.24 feet to the POINT OF BEGINNING.

PARCEL NO. 2:
COMMENCING at the Southeast corner of NW ¼ SE ¼, Section 8, Township 3 North, Range 5 West, B.M., Owyhee County, Idaho, the PLACE OF BEGINNING, and running thence North 1320 feet more or less to the East and West center line of said Section 8;

Thence West along the said center line 760 feet to a point;

Thence in a Southwesterly direction along the center of the Government Drain Ditch, as the same is now located, 1340 feet more or less to a point on the South boundary line of said NW ¼ SE ¼, which point is 997 feet west of the PLACE OF BEGINNING;

Thence East along the said South boundary line of NW ¼ SE ¼, 997 feet to the POINT OF BEGINNING.

PARCEL NO. 3
The NW ¼ NE ¼ section 8, Township 3 North, Range 5 West, B.M., Owyhee County, LESS that part of NW ¼ NE ¼ lying North and West of the Patch Canal as the same is now located in Section 8, T3N, R5W, B.M.

ALSO EXCEPTING THEREFROM

A parcel of land situated in NW ¼ NE ¼, Section, 8, Township 3 North, Range 5 West, B.M., Owyhee County, Idaho, lying South of State Highway No. 19, North and West of the left bank of Succor Creek and East of the Patch Canal up to the Waste Ditch, which access to the waters of said Succor Creek in the SE corner of said tract, described as follows:

BEGINNING at a point 25 feet South of the Northeast corner NW ¼ NE ¼;

Thence West along the South line of said State Highway a distance of 648 feet to a point on the right of way of said Patch Canal;

Thence along the East side of the said Patch canal South 45° 45' West, a distance of 225 feet;

Thence continuing along said East side of said Patch Canal South 47° 15" East a distance of 222 feet.

Thence continuing along the South and East side of said Patch Canal South 41° West a distance of 340 feet;

Thence South 72 ° East a distance of 108 feet to a point on the North bank of Succor Creek;

Thence north 52° 23' East along said North back of Succor Creek, a distance of 620 feet;

Thence continuing along the North and East bank of said Succor Creek South 62° East 283 feet;

Thence South 62 feet;

Thence East 25 feet;

Thence North along the East boundary line of said NW ¼ NE ¼, a distance of 414 feet to the POINT OF BEGINNING.

EXCEPTING FROM PARCELS 1, 2, and 3, all mineral rights as reserved to the State of Idaho in deed filed October 18, 1927 in Book 22 of Deeds, page 301, records of Owyhee County, Idaho.

5. Alan Mitchell (404 S. 1st St W.) (Shown as part of No. 4 on Map A)

Described As Follows:

The N ½ of the East 423.86 feet of the N ½ N ½ SW ¼ NE ¼

— Continued on next page

Public notices

of Section 9, Township 3 North, range 5 West, B.M., Owyhee county, Idaho as monumented and represented on a 1996 Record of Survey filed in the records of said county by Professional Land Surveyor # 6373, recorded October 25, 1996, Instrument No. 220145

6. Emanuel Ramos (219 Barbara Street) (Shown as part of NO. 4 on Map A)

Described As Follows:

That portion of the N ½ of the N ½ of the SW Quarter of the NE Quarter of Section 9, Township 3 North, Range 5 West, Boise Meridian, Owyhee County, Idaho, which lies North and East of the “C” canal of the Gem Irrigation District as now constructed;

LESS the East 423.86 feet thereof and subject to a 40 foot wide non-exclusive road right of way easement described as follows:

BEGINNING at a found ½ inch diameter rebar, which is South 89° 12’ 24” East along the East-West centerline of said Northeast Quarter, 643.56 feet from the Northeast 1/16 corner of said section 9; and running thence South 0° 41’ 42” West, 40.00 feet to a point which lies North 0° 41’ 42” East, 9.96 feet from a found ½ inch diameter rebar; thence North 89° 09’ 05” West, 114.50 feet to an existing ½ inch diameter rebar; thence North 89°12’ 50” West, 59.5 feet, more or less, to the centerline of the aforesaid “C” canal which is also South 89° 12’ 50” East, 281.6 feet, more or less, from an existing ½ inch diameter rebar; thence Northwesterly along said centerline the following courses and distances which approximate the centerline North 41° 36’ 07” west, 12.32 feet and North 8° 51’ 03” West, 31.03 feet to the aforementioned East-West centerline of the Northeast Quarter; thence South 89° 12’ 24” East, 187.5 feet, more or less, to the POINT OF BEGINNING.

7. Toni Ross property (Shown as part of No. 4 on Map A)

Described As Follows:

The following described real property, located in Owyhee County, Idaho, to-wit:

That part of the N ½ N ¼ SW ¼ NE ¼ of Section 9, Township 3 North, Range 5 West, B.M., Owyhee County, Idaho, lying South and West of the Centerline of the “C” Canal of the Gem Irrigation District, as now constructed; LESS THE FOLLOWING DESCRIBED PARCEL:

A part of the Southwest ½ of the Northeast ¼ of Section 9, Township 3 North, Range 5 West, of the Boise Meridian in Owyhee County, Idaho, more particularly described to wit:

COMMENCING at the Northwest corner of the Southwest ¼ of the Northeast ¼ of Section 9, T3N, R5W B.M.; thence South 0° 25’ 20” East 178.80 feet, along the West line of the said Southwest ¼ of the Northeast ¼, to the INITIAL POINT of this description; thence continue South 0° 25’ 20” East 150.00 feet, to the Southwest corner of the North ½ of the North ½ of the said Southwest ¼ of the Northeast ½; thence North 89° 47’ East 188.00 feet, along the South line of the said North ½ of the North ½ of the Southwest ¼ of the Northeast ½; thence North 0° 25’ 20” West 150.00 feet, parallel to the said West thence South 89° 47” West 188.00, parallel to the South line to the INITIAL POINT OF THIS DESCRIPTION.

Section 2: That the City Clerk is hereby directed to alter all use and area maps and all official maps depicting the boundaries of the City of Homedale, in accordance with this Ordinance.

Section 3: All Ordinances, resolutions, orders or parts thereof in conflict herewith are hereby repealed, rescinded and annulled.

Section 4: This Ordinance shall be in full force an effect from and after its passage, approval and publication, according to law.

Section 5: That the Clerk of the City of Homedale shall within ten (10) days following the effective date of this Ordinance, duly file a certified copy of this Ordinance and a map prepared I a draftsman like manner plainly and clearly designating the boundaries of the City of Homedale, including the land herein annexed, with the following officials of the County of Owyhee, State of Idaho, to wit: the Recorder, Auditor, Treasurer and Assessor and shall also file simultaneously a certified copy of this Ordinance with the State Tax Commission of the State of Idaho, all in compliance with Idaho Code 63-2215.

PASSED BY THE COUNCIL OF THE CITY OF HOMEDALE, IDAHO, THIS 26th DAY OF OCTOBER, 2006.

APPRVOED BY THE MAYOR OF THE CITY OF HOMEDALE, IDAHO, THIS 26TH DAY OF OCTOBER 2006.

/s/PAUL J. FINK, Mayor
ATTEST: /s/ALICE E. PEGRAM, City Clerk
12/6/06

**CITY OF HOMEDALE
ORDINANCE # 368**

AN ORDINANCE TO VACATE THE PLATTED ALLEY RUNNING NORTH AND SOUTH BETWEEN EAST COLORADO AVE. AND EAST WYOMING AVE. IN BLOCK 68, ORIGINAL PLAT, CITY OF HOMEDALE, OWYHEE COUNTY, IDAHO;

DETERMINING THAT THE VACATION OF SUCH ALLEY IS IN THE BEST INTERESTS OF AND ADVANTAGEOUS TO THE CITY OF HOMEDALE AND ITS CITIZENS AND PROPERTY OWNERS; DETERMINING THAT NO DAMAGE WILL BE SUSTAINED BY THE CITIZENS OR PROPERTY OWNERS OF THE CITY OF HOMEDALE BY REASON OF THE VACATION OF SUCH ALLEY; PROVIDING THAT THE TITLE TO THE ABOVE VACATED PLATTED ALLEY SHALL REVERT TO THE OWNER OR OWNERS OF ADJACENT REAL ESTATE SUBJECT TO ALL EXISTING EASEMENTS AND RIGHTS-OF-WAY FOR CITY WATER MAINS AND LINES, ELECTRICAL POWER POLES, LINES, AND ANCHORS, TELEPHONE LINES, POLES AND ANCHORS, AND NATURAL GAS MAINS AND LINES; AND FURTHER EXPRESSLY RESERVING UNTO THE CITY OF HOMEDALE, IDAHO, RIGHTS-OF-WAY ACROSS SUCH VACATED ALLEY FOR EACH AND ALL OF THE ABOVE SPECIFIED PURPOSES; AND REPEALING ALL ORDINANCES AND PARTS OF ORDINANCES IN CONFLICT HEREWITH:

BE IT ORDAINED BY THE MAYOR AND COUNCIL OF THE CITY OF HOMEDALE, IDAHO:

Section 1: PURPOSE: It is hereby

declared that the North/South alley between East Colorado Ave. and East Wyoming Ave. in Block 68, Original Plat of the City of Homedale, Owyhee County, Idaho, is not necessary for the use of the City of Homedale and that it is in the best interests of the surrounding land owners and to the advantage of the City of Homedale that the City vacate said alley. It is further determined by the City of Homedale that there will be no damage sustained by the City of Homedale, or by the citizens or property owners of the City of Homedale by reason of vacation of said alley.

Section 2: VACATION OF PLATTED ALLEY: It is hereby declared that the platted alley running North and South between East Colorado Ave. and East Wyoming Ave. in Block 68, Original Plat, City of Homedale, Owyhee County, Idaho shall be vacated. It is further determined that the title to the above described vacated platted alley shall revert to the owner or owners of adjacent real property; provided, however, that the title reverting to the adjacent property owners shall be subject to all existing easements and rights-of-way for the City water main and the right-of-way to the City of Homedale across such vacated platted alley for all the above described purposes, and for the maintenance of those items. The existing sewer lines on the above described property will be the responsibility of the property owners. Any repairs or replacement will be the responsibility of the property owners. No buildings or structures shall be built over the existing sewer line.

Section 3: CONFLICT: All ordinances and parts of ordinances in conflict with this ordinance are hereby repealed.

PASSED BY THE HOMEDALE CITY COUNCIL on this 20th day of November, 2006.

APPROVED BY THE MAYOR, CITY OF HOMEDALE, on this 20th day of November, 2006.

/s/Paul J. Fink, Mayor
ATTEST: /s/Alice E. Pegram, City Clerk
12/6/06

NOTICE OF ASSESSMENT DUE

NOTICE IS HEREBY GIVEN that assessments levied by the Gem Irrigation District in 2006 for 2007 by virtue of the public notice given by the Bureau of Reclamation under Owyhee Project contract requires that payment is due in full before water will be delivered.

This assessment will become delinquent and subject to a penalty and interest unless paid before 5:00 p.m., December 20, 2006, provided that one-half of said assessment may be paid on or before December 20, 2006 and the remainder on or before March 15, 2007, or the delivery of said water will be withheld.

Payment of said assessment may be made to the Gem Irrigation District, in the City of Homedale, County of Owyhee, Idaho, during office hours of any business day or mailed.

Connie Chadez
Secretary/Treasurer
Gem Irrigation District
12/6,13/06

NOTICE OF ASSESSMENT DUE

NOTICE IS HEREBY GIVEN THAT ACCORDING TO SECTION 43-707, IDAHO CODE assessments for the

Grand View Irrigation District 2006, Irrigation season are due and payable and will become delinquent at five o’clock p.m. on the twenty day of December 2006. Payment must be made in lawful money on the United States, negotiable bank draft or cashiers check. Payment may be made in person at the Irrigation District Office or mailed to the District.

Dixie McDaniel, Secretary
Grand View Irrigation District
PO Box 9
Grand View, ID 83624
12/6,13/06

**HOMEDALE SCHOOL DISTRICT #370
CALL FOR BID FOR SCHOOL BUS**

NOTICE IS HEREBY GIVEN that sealed bids will be received by Homedale Jt. School District No. 370, Homedale, Idaho for the purchase of one (1) 2008 71-passenger school bus (complete – body and chassis).

Bid documents and detailed specifications are available at the Homedale School District Office, 116 East Owyhee Ave., Homedale, Idaho between the hours of 8:30 a.m. and 4:00 p.m. Monday through Friday until day of bid opening.

Bids must be submitted on or before 9:00 a.m. on January 4, 2007 to the Homedale School District Office, 116 East Owyhee Ave., Homedale, Idaho. Bids received after the stated time and date will not be considered. At the stated time and place, bids will be publicly opened and read aloud.

The Board of Trustees reserve the right to accept or reject or to select any portion thereof of any or all bids and to waive any technicality. No bidder may withdraw his bid after the opening of such bids unless the awarding of the bid is delayed for a period exceeding thirty days.

/s/Faith K. Olsen, Assistant Clerk
12/6,13/06

NOTICE

The Southwest District Board of Health will hold a **Board Meeting** on Friday, December 15, 2006 from 8:30 a.m. to 10:30 a.m. at the Southwest District Health, Room 206, 920 Main Street, Caldwell, Idaho.
12/6/06

**NOTICE OF HEARING ON NAME CHANGE
CASE NO.: CV-2006-05763H**

A petition to change the name of Hannah Lynne Gibson, born 5/8/91 in Twin Falls, Idaho residing at 2723 Kingsway Dr., Homedale, Idaho has been filed in Owyhee County District Court, Idaho. The name will change to Hannah Lynne Johnson, because she would like to have the last name of her stepfather and the rest of the family with whom she lives. The child’s father is living. The child’s mother is living.

A hearing on the petition is scheduled for 10:30 o’clock a.m. on December 20, 2006, at the County Courthouse. Objections may be filed by any person who can show the court a good reason against the name changes.

Date: 11/6/06
Charlotte Sherburn, Clerk of the District Court
By Jan Fink, Deputy Clerk
11/15,22,29;12/6/06

**NOTICE OF HEARING ON PETITION FOR GUARDIANSHIP
CASE NO. CV06-5653**

IN THE DISTRICT COURT OF THE THIRD JUDICIAL DISTRICT OF THE STATE OF IDAHO, IN AND FOR THE COUNTY OF OWYHEE

In the Matter of the Guardianship of: Janae Lynn Volk and Avery Ryan Volk, Minor Children.

TO: ANNA JANAE COOK

NOTICE IS HEREBY GIVEN that on Monday, January 8, 2007, at the hour of 3:30 p.m. of said day, or as soon thereafter as counsel can be heard, before the Honorable Thomas J. Ryan, Magistrate Judge, at the Owyhee County Courthouse, 20381 State Hwy 78, Murphy, Idaho 83650, the Petition for Guardianship filed herein will be heard.

DATED this 21st day of November, 2006.

/s/William H. Wellman
Attorney for Petitioner
228 Twelfth Ave. Rd.
PO Box 453
Nampa, ID 83653
Phone 208/467-5009
Fax 208/467/3945
11/29;12/6,13/06

**NOTICE TO CREDITORS
CASE NO. CV-06-05768
IN THE DISTRICT COURT OF THE THIRD JUDICIAL DISTRICT OF THE STATE OF IDAHO, IN AND FOR THE COUNTY OF OWYHEE**

IN THE MATTER OF THE ESTATES OF: MARGARET D. LONG and, LESTER H. LONG, Deceased.

NOTICE IS HEREBY GIVEN that ALVIN LONG, 19266 Symms Road, Caldwell, ID 83607, has been appointed Personal Representative of the above-named Decedents. All persons having claims against the Decedents or the estates are required to present their claims within four months after the date of the first publication of the Notice to Creditors, or within 60 days after the undersigned mailed or delivered a copy of this Notice to such persons, whichever is later, or said claims will be forever barred.

Claims must be presented to the undersigned at the address indicated, and filed with the Clerk of the Court.

DATED: November 21, 2006.

LOVAN ROKER, P.C.
/s/ERIC F. BALDWIN,
Attorneys for Petitioner
Lovan Roker, P.C.
Gregg E. Lovan- ISB No. 1762
Matthew J. Roker- ISB No. 4835
Eric F. Baldwin- ISB No. 6240
T. Shane Darrington- ISB No. 6461
Attorneys at Law
717 South Kimball, Ste 200
Caldwell, ID 83605
Phone: 208-459-6795
Fax: 208-459-6908
Attorneys for Petitioner, ALVIN LONG
11/29;12/6,13/06

Have
a news tip?

Call us!

337-4681

<div>Owyhee County Church Directory</div>		<div><div>Knight Community Church</div><div>Grand View</div><div>Pastor Paul H. Ryan • 834-2639</div><div>Sunday School 9:30 a.m.</div><div>Worship Service 10:45 a.m.</div><div>Adult Bible Study: Wednesday, 7 p.m.</div><div>Knight's Neighborhood:</div><div>(Youth Activity Group) Friday 5-6:30 pm</div></div>
<div><div>Assembly of God Church</div><div>Homedale</div><div>15 West Montana, 337-4458</div><div>Pastor George Greenwood</div><div>Sunday School 9:30am</div><div>Sunday Morning Worship 10:30am</div><div>Sunday Evening Service 6:00pm</div><div>Wed. Bible Study 7:00pm</div></div>	<div><div>Crossroads Assembly of God</div><div>Wilder</div><div>Hwy 19 & 95, 482-7644</div><div>Sunday School 10am</div><div>Sunday Morning Worship 11am</div><div>Sunday Evening Worship 6pm</div><div>Wed. Bible Study 7pm</div></div>	<div><div>Our Lady of the Valley Catholic Church</div><div>1122 W. Linden St., Caldwell</div><div>459-3653</div><div>Mass:</div><div>Saturday 5:00 pm</div><div>Sunday 9:30 am</div><div>Spanish Mass: Saturday 7:00 pm</div><div>Spanish Mass: Sunday Noon</div></div>
<div><div>Mt. Calvary Lutheran</div><div>Homedale</div><div>337-4248 or 454-1528</div><div>SE corner Idaho and West 7th</div><div>Sunday School: 9:00 to 9:45 am</div><div>Services: 10:00 am</div><div>Wednesday Night Adult Bible Study:</div><div>7 to 8:30 pm</div></div>	<div><div>Friends Community Church</div><div>Wilder - Homedale</div><div>17434 Hwy 95, 337-3464</div><div>Pastor: John Beck</div><div>Worship Services: 10:45 am Sundays</div><div>Sunday School: 9:30 am</div><div>Wednesday Prayer Meeting 6:30 pm</div><div>CLC - Wednesdays at 3:15</div></div>	<div><div>Church of Jesus Christ of Latter Day Saints</div><div>Homedale</div><div>708 West Idaho Ave 337-4112</div><div>Bishop Alan McRae</div><div>Bishop Dwayne Fisher</div><div>Sunday 1st Ward 9am</div><div>Sunday 2nd Ward 12:30pm</div></div>
<div><div>Homedale Baptist Church</div><div>Homedale</div><div>212 S. 1st W.</div><div>Sunday School 10am & 11am</div><div>Sunday Evening 7pm</div><div>Wednesday Evening 7pm</div><div>Pastor James Huls</div></div>	<div><div>Wilder Church of God</div><div>Wilder</div><div>205 A St. E, 482-7839</div><div>Pastor Ray Gerthung</div><div>Sunday School 9:45am</div><div>Sunday Service 11am</div><div>Sunday Eve. 6:00pm</div><div>Wed. Eve. 7:00pm</div></div>	<div><div>Mountain View Church of the Nazarene</div><div>26515 Ustick Road, Wilder</div><div>337-3151</div><div>Sunday School 9:30</div><div>Worship 10:30</div><div>Adult & Youth Bible Class: Wednesday 7:00 pm</div><div>Bible Based Recovery: Friday 7:00 pm</div></div>
<div><div></div><div><div>MARSING APOSTOLIC ASSEMBLY</div><div>Asamblea Apostolica de Marsing</div><div>221 W. Main • Marsing, Idaho</div><div>Pastor Ricardo Rodriguez</div><div>896-5552 or 371-3516</div><div>Sunday School 1:30 pm • Sunday Service 3 pm</div><div>Thursday Service 7 pm • (Bilingual Services/Espanol)</div></div></div>	<div><div>Iglesia Evangelica</div><div>Wilder</div><div>317 3rd st.,</div><div>Pastor Ramiro Reyes</div><div>10 am Sunday School</div><div>11 am Service</div><div>482-7484</div><div>Bilingual</div></div>	<div><div>Marsing Church of Christ</div><div>Marsing</div><div>932 Franklin, Marsing</div><div>Minister Gib Nelson</div><div>Sunday Bible Study 10am</div><div>Sunday Worship 11am</div></div>
<div><div>Christian Church</div><div>Homedale</div><div>110 W. Montana, 337-3626</div><div>Pastor Maurice Jones</div><div>Sunday Morning Worship 11am</div><div>Church school 9:45</div></div>	<div><div>Bible Missionary Church</div><div>Homedale</div><div>West Idaho, 337-4437</div><div>Pastor Paul Miller</div><div>Sunday School 10am</div><div>Worship 11am</div><div>Sunday Evening 7pm</div><div>Wednesday Evening 7:30</div></div>	<div><div>Assembly of God Church</div><div>Marsing</div><div>139 Kerry, 896-4294</div><div>Pastor Rick Sherrow</div><div>Sunday School 10am</div><div>Sunday Worship 11am & 6 pm</div></div>
<div><div>Lizard Butte Baptist Church</div><div>Marsing</div><div>Pastor London</div><div>116 4th Ave. W., 859-2059</div><div>Sunday worship 11am-12pm</div><div>Sunday school 10 am-10:55am</div><div>Sunday evening 7pm-8pm</div><div>Wednesday evening 7pm-8pm</div><div>Every 3rd Sat. family video at 6 pm</div></div>	<div><div>Nazarene Church</div><div>Marsing</div><div>Pastor Bill O'Connor</div><div>896-4184</div><div>12 2nd Avenue West</div><div>Worship Services - Sunday 11am and 6pm</div><div>Teen Services Sundays 7:00 pm</div><div>Sunday School - 9:45am</div><div>Mid Week TLC Groups</div></div>	<div><div>Trinity Holiness Church</div><div>Homedale</div><div>119 N. Main</div><div>Pastor Samuel Page</div><div>337-5021</div><div>Sunday School 10am</div><div>Sunday Morning Worship 11am</div><div>Sunday Evening 7pm</div><div>Thursday Evening 7:30pm</div></div>
<div><div>Church of Jesus Christ of Latter Day Saints</div><div>Marsing</div><div>215 3rd Ave. West, 896-4151</div><div>Bishop Streibel</div><div>Sunday 1st Ward 9am</div><div>Sunday 2nd Ward 12:30pm</div><div>Primary 11am</div></div>	<div><div>Vision Community Church</div><div>Marsing</div><div>221 West Main Marsing, Idaho</div><div>208-896-5407</div><div>Sunday School 9:30 a.m.</div><div>Sunday Service 10:30 a.m.</div><div>Adult, Kids & Youth Meetings Wed. 7:00 p.m.</div></div>	<div><div>United Methodist Church</div><div>Wilder</div><div>Corner of 4th St. & B Ave.</div><div>880-8751</div><div>Pastor Carolyn Bowers</div><div>Sunday Services 9:30am</div></div>
<div><div>First Presbyterian Church</div><div>Homedale</div><div>320 N. 6th W., 337-3060</div><div>Pastor Marianne Paul</div><div>Sunday Morning Worship 11am</div><div>Sunday School 11am</div></div>	<div><div>Calvary Holiness Church</div><div>Wilder</div><div>Corner of 3rd St. & B Ave., • 761-7843</div><div>Pastor Matthew Hunt</div><div>Sunday School: 10:00 a.m.</div><div>Sunday Morning Worship: 11:00 a.m.</div><div>Sunday Evening: 6:00 p.m.</div><div>Wednesday Evening: 7:00 p.m.</div><div>Food Pantry Open Fridays 10 am - Noon</div></div>	<div><div>Seventh Day Adventist</div><div>Homedale</div><div>16613 Garnet Rd.,</div><div>880-0902 or 453-9289</div><div>Pastor Chuck Dimick</div><div>Sabbath School Sat. 9:30am</div><div>Worship 11am</div><div>Tuesday Prayer Mtg. 7:00 pm</div></div>
<div><div>Iglesia Bautista Palabra de Esperanza</div><div>Homedale</div><div>711 W. Idaho, 463-9569</div><div>Pastor Jose Diaz</div><div>Servicios: Los Domingos 11:00 am</div></div>	<div><div>Our Lady Queen of Heaven Catholic Church - Oreana</div><div>2006 Mass Schedule - Saturdays 9:30am</div><div>Jan. 14 - Feb. 25 - March 18 - April 22</div><div>May 13 - June 24 - July 22 - Aug. 12</div><div>Sept. 9 - Oct. 14 - Nov. 25 - Dec. 23</div><div>For more information, call</div><div>St. Paul's Church, Nampa 466-7031</div></div>	<div><div>Amistad Cristiana de Wilder</div><div>Esquina de 4 y calle B</div><div>Domingos:12:00 pm Servicio</div><div>Miercoles: 4:30 pm Arte para Ninos</div><div>Martes y Jueves: 6:30 pm Ingles</div><div>Sabados: 12 pm Banco de ropa</div><div>Espanol - 989 7508</div></div>



HELP WANTED

Owyhee County Sheriff is accepting applications for a position in the Owyhee County E-911 dispatch center. Starting Salary \$11.39 to 11.80/hr depending on experience. Applicants must be able to demonstrate computer skills, meet requirements for Idaho Peace Officers and Standards Dispatch Academy, and pass written, verbal and physical fitness tests, a drug screening test, polygraph and psychological exam. Applicants will be chosen based on a standardized scoring basis. Applications may be picked up at the Owyhee County Sheriff’s Office in Murphy or the Marsing City Hall or by calling 495-1203 Mon.- Fri. from 8am to 5pm. Applications must be received by December 18th, 2006. Applications must be filled out in entirety in order to be considered. Acceptable applicants will be notified of the dates and times for further testing. Bilingual ability is a plus but not mandatory. Owyhee County is an equal opportunity employer.

HELP WANTED

Help wanted: Bookkeeper/sales clerk, part-time (approx. 2-3 days per wk). Bring resume or call Duane at Wilder Building Center 482-7282
Secretarial position, seasonal (September-March) 8am-4:30pm M-F, typing, telephone skills 337-4025
Probation Department, part-time classroom assistant in alternative classroom setting for at risk students. Apply at Owyhee County Probation 102 W. Idaho in Homedale, M-F between 9-4.
All ages needed for modeling, acting, extra work, in-store promotions, and conventions. Earn \$72-\$795 per day! No experience. Not a school. 100’s of jobs available. Call 208-433-9511
Drivers: Company. 1 year verifiable with 150k miles. CDL-A 40cpm! Full benefits. Vacation/Holiday pay. WEL Companies 800-387-0088 ext. 180
Heavy equipment operator w/CDL & good driving record, light mechanic skills w/some general labor. Pay DOE. Call 573-5700 or fax resume to 208-337-3288 Homedale area.

Advertising

It's what makes great businesses great businesses

Established 1865

The Owyhee Avalanche

337-4681

The Newspaper:

Make it your business.

We're committed to keeping you informed of developments that affect you at work and at home. From school and community events to city and county government news, this newspaper keeps you on top of what's happening in Owyhee County.

It's an essential component of our free, democratic society, delivering information that lets you develop informed opinions and decisions.

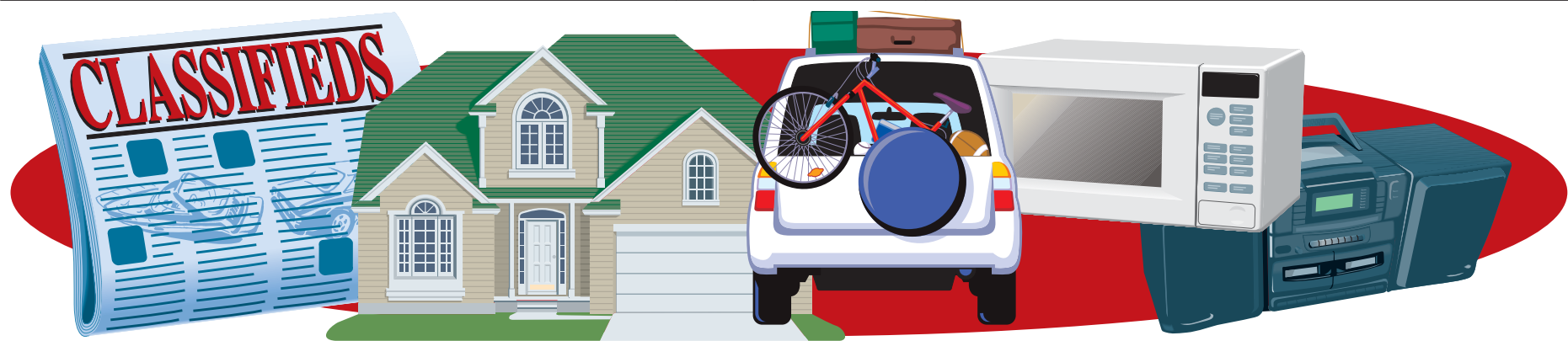
Make a commitment to be informed.

Subscribe today.



The Owyhee Avalanche

337-4681 • PO Box 97 • Homedale, ID 83628 • owyheeavalanche@cablcone.net



REAL ESTATE
Investment opportunity, rentals 337-4887
Home for sale by owner or lease to own option. 3 bed 1 bath in Homedale. Contact Francisco 208-695-0293
Fast Cash! Real Estate Equity Loans American Financial (208) 389-9200

Need Cash?

I CAN HELP!

- ❖ Buying Houses & Property
- ❖ Buying Contracts
- ❖ Loaning Money on Real Estate Equity
- ❖ Buying Estates

Call Mike Vance
208-389-9200

WANTED
Wanted To Lease By USDA The U.S. Department of Agriculture, Farm Service Agency's Owyhee County Office in Marsing, Idaho is interested in leasing 2442 net usable square feet of first class, high quality office space. To be considered, office location must be within the boundaries of Morning Dove Drive on the North, the Snake River on the East, Pershall Lane on the South, and Van Lane on the West. Preference will be given to first floor space. Occupancy is required by July 15, 2007. Call Steve Ulrich at (208) 896-4384 for a copy of the solicitation.

FARM & RANCH
Paint colts for sale, ranch raised 208-583-2452
Prime and proven potato ground for lease. 70 acres/Wilder. 208-455-1839 or 208-841-8793
Land for lease – 18 acres, 12 in alfalfa, avail. 1-1-07 337-3912
Barley straw 16x18 bales \$2.50/ bale 250-3344
Dream of a well trained horse not a beast of burden. Let us help you! Blazer Horses are born gentle! Makes them easy to work with. Does more jobs better English or western. For woman, children & men. Horsemanship you can trust. Adrian, Or. 208-861-8581

.41 acre lot fronting Hwy 95 bypass in Homedale. Has City Sewer and water. Would make great location for buisness. Zoned commercial.
\$79,000, call me for details.

Two 1 acre lots Near marsing. Two nice irrigated building lots in the country. Buy 1 or both. \$69,900 each.

Buyer wants home in Marsing area below 100K.

Two commercial lots on Owyhee Ave in downtown Homedale. \$40,000

KENT SIMON
HOMEDALE, IDAHO
337-4170 • CELL: 484-0075
www.BuyMOUNTAINVALLEY.COM

FOR RENT
For sale or rent 3 bdrm 2 bth single wide 337-4887
Clean 2 bdrm 1 bth, W/D, appliances included, shed, no pets \$450 mo. \$200 dep. 455-2911
Office space avail. Dec 1st. 1075 sq. ft., reception area, 2 offices, break room & so on. 337-4444
Boat & RV Storage, Marsing Storage 867-2466

FOR SALE
Registered English Bulldog puppy for sale. Female for \$500 shipping not included. Vet checked, up to date shots worming. Home-raised with children in loving environment. Email for more information/availability. johnson_derek@unionplus.net

Toy poodle puppy, AKC, male, apricot, 10 wks, current shots \$400 208-724-3343
GE Hotpoint refrigerator like new, white, 18.2 cubic ft., ice maker, works great \$350 OBO 337-5816
To be moved: 24' x 52' 1991 Fleetwood Mobile home on foundation. Updated windows, new carpet, central air, 6" walls and washer and dryer. Includes large wood deck. \$25,000.00. Call 495-2885 or 863-5322.
Beautiful multi-colored Chihuahua pups just in time for Christmas. Ready Dec. 8th \$350. 337-3615
1994 Honda 300 4Trax, good condition (2wd) \$1800; 2005 12 ft. duck/fishing boat, low profile, 2hp motor, 450 lb. capacity \$1300. 573-1704
Fisher wood stove with accessories, very good condition \$300 OBO 337-3873 or 899-9130
1992 Ford 302 motor only, fuel injected motor, rebuilt, great condition \$500 OBO. Call Kevin at 337-3149
Fun private piano, guitar, violin or fiddle lessons. Affordable rates. 283-5750

Microfiber couch & love seat, stain resistant, lifetime warranty, brand new in boxes. Retail \$1495. Must sell \$499. 208-888-1464
Bedroom set 7-piece cherry set. Brand new in boxes. List \$2250. Must sell \$450. 208-888-1464
Bed-queen pillowtop mattress set. Brand new, still in plastic, warranty. Retail \$599. Sell \$119! 208-921-6643
King-sized pillowtop mattress set. New, in bag, with warranty. List \$750. Sacrifice \$199. 208-921-6643
Cherry Sleigh bed. Solid wood. New in box. Value \$799. Sacrifice \$195. 208-888-1464
Bedroom set, cherrywood, solid wood construction. Sleigh bed, 2 nightstands, dresser w/mirror, tall chest, TV armoire, dovetail drawers. Will sell all or part. Cost \$10,000, sell \$2,900. 208-362-7150
Dining set, cherrywood, 63" hutch & buffet, 78" table w/2 leaves, 6 curved back chairs. Dovetail drawers. Side server also available. Cost \$9,000 sell \$2,800 firm. 208-362-7150

FOR SALE
Pool table, 8 ft. table, 1" slate, leather pockets, Aramith balls, acc. Pkg. included. New in box. Cost \$4,500 sell \$1450. 208-362-7150
Queen orthopedic pillow-top mattress & box. New in plastic. Cost \$400 sacrifice \$195. 208-919-3080
Mattress, king pillow-top & box. Never used. Still in factory wrapper. Cost \$550 sacrifice \$295. 208-919-3080
Used tractor parts 100's of salvaged farm tractors and combines. Nampa Tractor Salvage, 9055 Hwy 20, Nampa, ID 83687 (208) 467-4430
Roll ends: Great for packing material, building fires, lining birdcages or for your kids to doodle on. The Owyhee Avalanche, Homedale

Beneli Nova Camo
1 3/2" - \$350.00

Whirlpool Dryer
Beige - \$125.00

Game Boy Color
w/ Accessories
Purple - \$40.00

Interested call
- 482-6210 -

LOST
\$250 Reward! Reddish/ brown Vizsla 6 mo. male dog, blue collar/tags, Wilder-Homedale off Fish Rd., please call 830-5758

SERVICES
Daycare 3 FT openings, ICCP approved, all meals provided, preschool program available, lots of activities. Call Donna 337-6180
Housekeepingservices available. Weekly, bi-weekly or just an extra hand over the holidays. Please call Cami @ 337-5667
Best price for on-site computer cleaning and repair. Call Tom or Colette at 899-9419 or 896-4676, Technical Computer.
Tim's Small Engine Repair: Complete servicing & repair available on lawnmowers, tillers, wheel-line motors, motorcycles, ATVs, all 2 & 4 cycle power equipment. Karcher pressure washer factory authorized repair center. 30916 Peckham Rd., 5 miles west of Wilder. 482-7461

YARD SALE
Everything goes moving sale! Cash only. 9am-4pm Dec. 8 & 9, 26107 Stewart Ln, Wilder.

VEHICLES
2006 ATV's New 50cc, 110cc, 150cc, 250cc. Special prices!!! Call for details. DL#3024 208-896-5720

Subscribe Today!
The Owyhee Avalanche
208-337-4681

DID YOU EVER THINK OF ADVERTISING AS ...

hiring an employee who could contact more than 7,200 homes and tell them about your merchandise or services?

An employee who could say exactly what you want, and work for what you can afford to pay?

We have.

REACH EVERY HOME IN THIS MARKET

The Owyhee Avalanche
P.O. Box 97 Homedale ID 83628

Buy it, sell it, trade it, rent it... in the Classifieds!

OFFICE: 896-5312
GEORGE WILSON: 573-6405
JOHN CONTI: 880-7829 • DEE WILSON: 880-5405
BOB BRINEGAR: 250-2207 • DIXIE GERDES: 899-2784
View Properties At: www.idaholand4u.com

22 ACRES WITH APPROVED 14 LOT SUB. in Wilder 1/2 mile to River Bend Golf Course and Snake River. \$475,000 MLS98239271
1 ACRE BUILDING LOT In Watkins Glenn Sub, Wilder. Near Snake River and River Bend Golf Course. \$82,000 Call Dee MLS 98271462
2.5 ACRE BUILDING LOT ON THE SNAKE RIVER Pressurized irrigation, great view of the Owyhees. \$198,760 MLS 98257219
5+ ACRE BUILDING LOT on Market Road in Homedale. Irrigation, View of the Owyhee Mountains. \$99,500
REMODELED 3 BDRM, 2 BATH ON 1 ACRE with shop and 2 bdrm, 1 bath rental. \$179,000
3 BEDROOM, 2 BATH HOME ON 5.6 ACRES Beautiful landscaping, fenced pasture w/ irrigation, 4-bay shop and garage, 58x30 steel barn/tack room, hay storage, 140x80 arena. Gorgeous view of the valley. PRICE REDUCED \$288,950 MLS 98254865

Santa's Shopping at Parma Furniture!

No Interest for 1 Year!
December 6-10, 2006 Only, See store for details



GLIDE ROCKER
BERRY, GREEN,
OR BROWN
NO OTTOMAN
\$299

GLIDE ROCKER
6 COLORS
WITH OTTOMAN
INCLUDED
\$449



SIMILAR TO ILLUSTRATION
BANANA CHAIR
\$49⁰⁰



HUGE
ASSORTMENT OF
LAMPS & PICTURES
ON SALE!



GRANDFATHER CLOCKS
STARTING AT **\$349**



AREA RUGS IN STOCK
6X9 OR 9X12



HUGE SELECTION!



CURIOS STARTING AT **\$249**



TABLE and
6 CHAIRS
\$995



ON SALE! FROM \$399

LANE CEDAR CHESTS

SAVE ON WHIRLPOOL APPLIANCES!



Whirlpool
ED5CHQ
Whirlpool
Side-by-Side
Refrigerator
\$849

FREE DELIVERY!

RF262LXSQ
Whirlpool
GLASSTOP
RANGE
\$629

FREE DELIVERY!



DU1100XTPQ
Whirlpool
DISHWASHER
\$449



Whirlpool Super Capacity
Washer
LSQ9549LG
\$449

DRYER
LER8648LQ
\$399

FREE DELIVERY!

SAVE ON BEDDING!
GUESTS COMING FOR THE HOLIDAYS? WE HAVE A GREAT SELECTION OF FUTONS & HIDE-A-BEDS ON SALE!

FUTON WITH MATTRESS
WHITE OR BLACK
\$349

HEADBOARDS
TWIN: **\$29⁹⁹**

BUNK BED **\$399**

SOFA HIDE-A-BEDS! **\$799**

RECLINERS, SOFAS & SECTIONALS
ALL IN STOCK & ON SALE
FOR SAME-DAY DELIVERY!

\$299

\$399
Black Only

Comfort King
\$699

Lane Lift Chairs
from **\$699**

MANY MORE STYLES TO CHOOSE FROM!

20" COMBO DVD/VCR
\$299

32" TV **\$399**
27" TV **\$299**

Stereo Boom Box
\$149

Big Screens In Stock!

DVD/VCR'S ON SALE!

MICROWAVES
ON SALE!
HUGE SELECTION!

FREE DELIVERY & SET-UP IN TREASURE VALLEY!

Parma Furniture Co.
"Like Having A Friend At The Factory"
108 3rd St. • Parma, Idaho
722-5158 • toll free: 888-722-0078

A Member of **nationwide west**
\$8 Billion Buying Power

THERE'S STILL TIME TO CARPET FOR THE HOLIDAYS!
CARPET & VINYL ON SALE!